

**Anti-Glucagon GCG Rabbit Monoclonal Antibody**  
**Catalog # ABO13942****Specification**

---

**Anti-Glucagon GCG Rabbit Monoclonal Antibody - Product Information**

Application	WB, IHC
Primary Accession	<a href="#">P01275</a>
Host	Rabbit
Isotype	Rabbit IgG
Reactivity	Rat, Human, Mouse
Clonality	Monoclonal
Format	Liquid

**Description**

Anti-Glucagon GCG Rabbit Monoclonal Antibody . Tested in WB, IHC applications. This antibody reacts with Human, Mouse, Rat.

**Anti-Glucagon GCG Rabbit Monoclonal Antibody - Additional Information**

**Gene ID** 2641

**Other Names**

Pro-glucagon, Glicentin, Glicentin-related polypeptide, GRPP, Oxyntomodulin, OXM, OXY, Glucagon, Glucagon-like peptide 1, GLP-1, Incretin hormone, Glucagon-like peptide 1(7-37), GLP-1(7-37), Glucagon-like peptide 1(7-36), GLP-1(7-36), Glucagon-like peptide 2, GLP-2, GCG ([HGNC:4191](http://www.genenames.org/cgi-bin/gene_symbol_report?hgnc_id=4191))

**Calculated MW**

20909 MW KDa

**Application Details**

WB 1:500-1:2000<br>IHC 1:50-1:200

**Subcellular Localization**

Secreted.

**Tissue Specificity**

Glucagon is secreted in the A cells of the islets of Langerhans. GLP-1, GLP-2, oxyntomodulin and glicentin are secreted from enteroendocrine cells throughout the gastrointestinal tract. GLP-1 and GLP-2 are also secreted in selected neurons in the brain.

**Contents**

Rabbit IgG in phosphate buffered saline, pH 7.4, 150mM NaCl, 0.02% sodium azide and 50% glycerol, 0.4-0.5mg/ml BSA.

**Immunogen**

A synthesized peptide derived from human Glucagon

**Purification**

Affinity-chromatography

Storage

**Store at -20°C for one year. For short term storage and frequent use, store at 4°C for up to one month. Avoid repeated freeze-thaw cycles.**

## **Anti-Glucagon GCG Rabbit Monoclonal Antibody - Protein Information**

**Name** GCG ([HGNC:4191](#))

### **Function**

[Glucagon]: Plays a key role in glucose metabolism and homeostasis. Regulates blood glucose by increasing gluconeogenesis and decreasing glycolysis. A counterregulatory hormone of insulin, raises plasma glucose levels in response to insulin-induced hypoglycemia. Plays an important role in initiating and maintaining hyperglycemic conditions in diabetes.

### **Cellular Location**

Secreted.

### **Tissue Location**

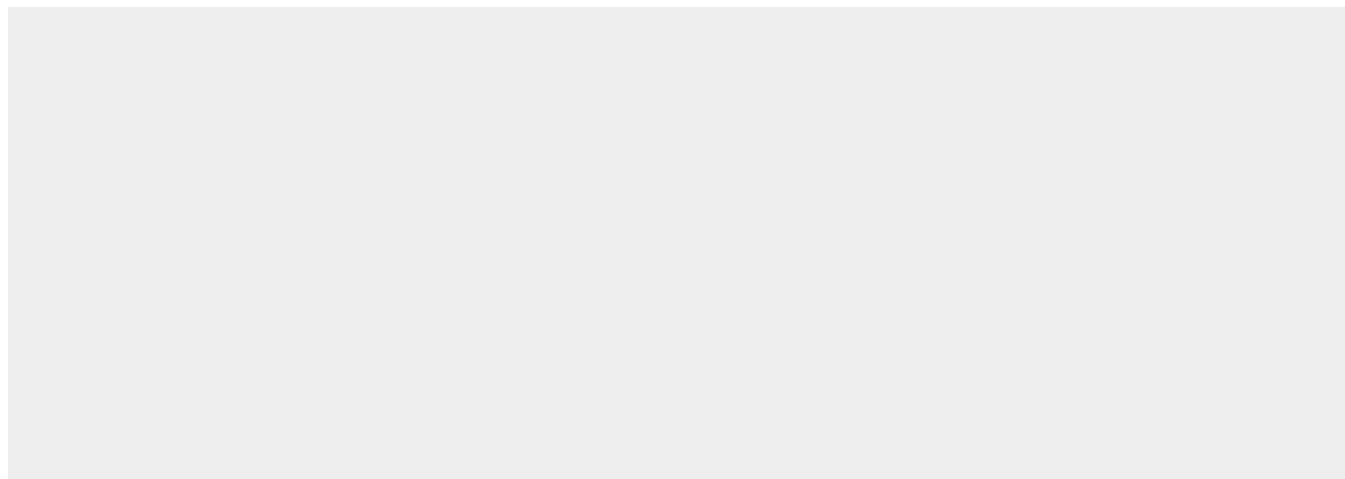
[Glucagon]: Secreted in the A cells of the islets of Langerhans. [Glucagon-like peptide 2]: Secreted from enteroendocrine cells throughout the gastrointestinal tract. Also secreted in selected neurons in the brain [Oxyntomodulin]: Secreted from enteroendocrine cells throughout the gastrointestinal tract

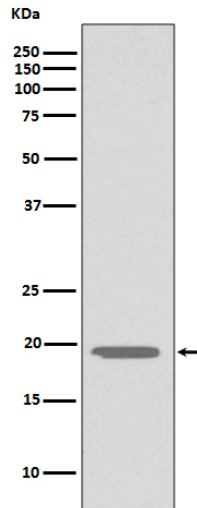
## **Anti-Glucagon GCG Rabbit Monoclonal Antibody - Protocols**

Provided below are standard protocols that you may find useful for product applications.

- [Western Blot](#)
- [Blocking Peptides](#)
- [Dot Blot](#)
- [Immunohistochemistry](#)
- [Immunofluorescence](#)
- [Immunoprecipitation](#)
- [Flow Cytometry](#)
- [Cell Culture](#)

## **Anti-Glucagon GCG Rabbit Monoclonal Antibody - Images**





Western blot analysis of Glucagon expression in HepG2 cell lysate.

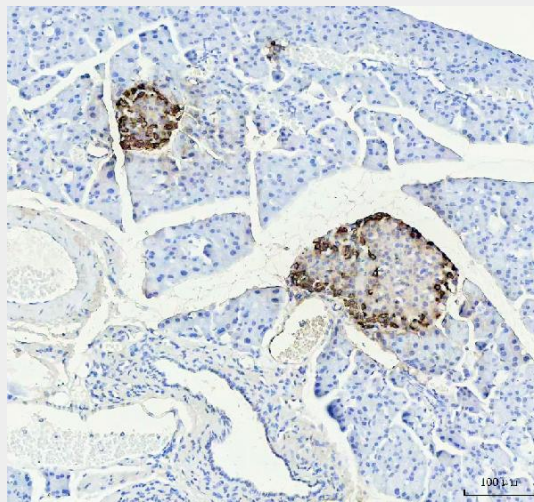


Figure 2. IHC analysis of Glucagon using anti-Glucagon antibody (M00678).

Glucagon was detected in a paraffin-embedded section of mouse pancreas tissue. Heat mediated antigen retrieval was performed in EDTA buffer (pH 8.0, epitope retrieval solution). The tissue section was blocked with 10% goat serum. The tissue section was then incubated with 1:50 rabbit anti-Glucagon Antibody (M00678) overnight at 4°C. Peroxidase Conjugated Goat Anti-rabbit IgG was used as secondary antibody and incubated for 30 minutes at 37°C. The tissue section was developed using HRP Conjugated Rabbit IgG Super Vision Assay Kit (Catalog # SV0002) with DAB as the chromogen.