

**Anti-hnRNP A1 Rabbit Monoclonal Antibody**  
**Catalog # ABO13947****Specification****Anti-hnRNP A1 Rabbit Monoclonal Antibody - Product Information**

Application	WB, IHC, IF, ICC, FC
Primary Accession	<a href="#">P09651</a>
Host	Rabbit
Isotype	Rabbit IgG
Reactivity	Rat, Human, Mouse
Clonality	Monoclonal
Format	Liquid

**Description**

Anti-hnRNP A1 Rabbit Monoclonal Antibody . Tested in WB, IHC, ICC/IF, Flow Cytometry applications. This antibody reacts with Human, Mouse, Rat.

**Anti-hnRNP A1 Rabbit Monoclonal Antibody - Additional Information**

**Gene ID** 3178

**Other Names**

Heterogeneous nuclear ribonucleoprotein A1, hnRNP A1, Helix-destabilizing protein, Single-strand RNA-binding protein, hnRNP core protein A1, Heterogeneous nuclear ribonucleoprotein A1, N-terminally processed, HNRNPA1, HNRPA1

**Calculated MW**

38747 MW KDa

**Application Details**

WB 1:500-1:2000<br>IHC 1:50-1:200<br>ICC/IF 1:50-1:200<br>FC 1:50

**Subcellular Localization**

Nucleus. Cytoplasm. Localized in cytoplasmic mRNP granules containing untranslated mRNAs. Shuttles continuously between the nucleus and the cytoplasm along with mRNA. Component of ribonucleosomes. In the course of viral infection, colocalizes with HCV NS5B at speckles in the cytoplasm in a HCV-replication dependent manner.

**Contents**

Rabbit IgG in phosphate buffered saline, pH 7.4, 150mM NaCl, 0.02% sodium azide and 50% glycerol, 0.4-0.5mg/ml BSA.

**Immunogen**

A synthesized peptide derived from human hnRNP A1

**Purification**

Affinity-chromatography

**Storage**

**Store at -20°C for one year. For short term storage and frequent use, store at 4°C for**

**up to one month. Avoid repeated  
freeze-thaw cycles.**

## **Anti-hnRNP A1 Rabbit Monoclonal Antibody - Protein Information**

**Name** HNRNPA1

**Synonyms** HNRPA1

### **Function**

Involved in the packaging of pre-mRNA into hnRNP particles, transport of poly(A) mRNA from the nucleus to the cytoplasm and modulation of splice site selection (PubMed:<a href="http://www.uniprot.org/citations/17371836" target="\_blank">17371836</a>). Plays a role in the splicing of pyruvate kinase PKM by binding repressively to sequences flanking PKM exon 9, inhibiting exon 9 inclusion and resulting in exon 10 inclusion and production of the PKM M2 isoform (PubMed:<a href="http://www.uniprot.org/citations/20010808" target="\_blank">20010808</a>). Binds to the IRES and thereby inhibits the translation of the apoptosis protease activating factor APAF1 (PubMed:<a href="http://www.uniprot.org/citations/31498791" target="\_blank">31498791</a>). May bind to specific miRNA hairpins (PubMed:<a href="http://www.uniprot.org/citations/28431233" target="\_blank">28431233</a>).

### **Cellular Location**

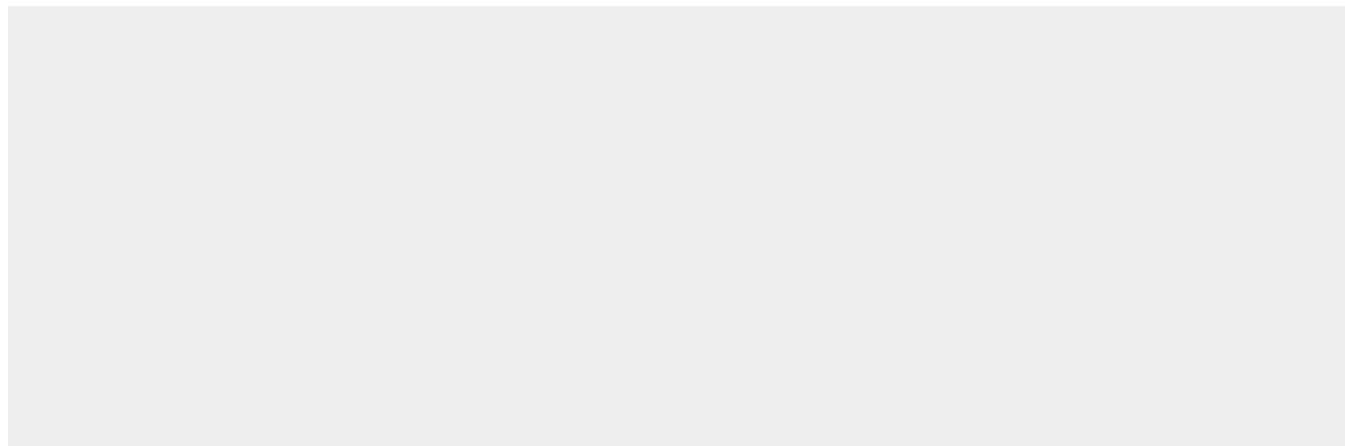
Nucleus. Cytoplasm Note=Localized in cytoplasmic mRNP granules containing untranslated mRNAs. Shuttles continuously between the nucleus and the cytoplasm along with mRNA. Component of ribonucleosomes (PubMed:17289661) Nucleus. Note=(Microbial infection) SARS coronavirus-2/SARS-CoV-2 ORF6 protein increases accumulation to the nucleus.

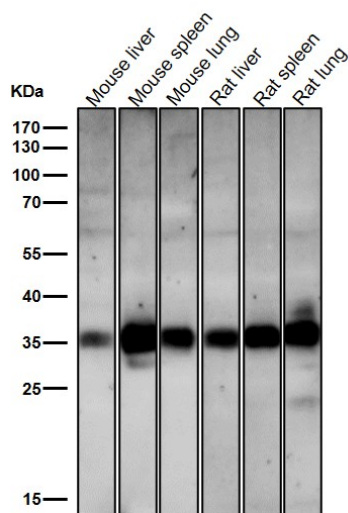
## **Anti-hnRNP A1 Rabbit Monoclonal Antibody - Protocols**

Provided below are standard protocols that you may find useful for product applications.

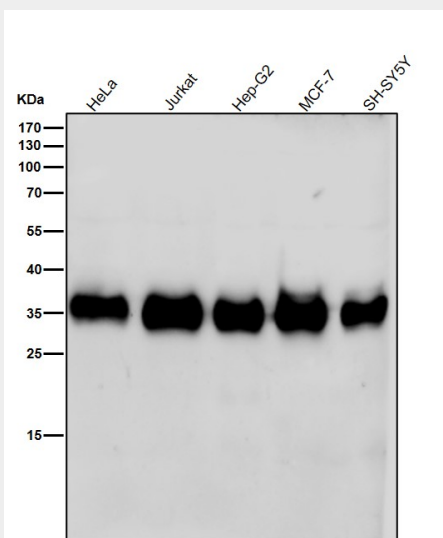
- [Western Blot](#)
- [Blocking Peptides](#)
- [Dot Blot](#)
- [Immunohistochemistry](#)
- [Immunofluorescence](#)
- [Immunoprecipitation](#)
- [Flow Cytometry](#)
- [Cell Culture](#)

## **Anti-hnRNP A1 Rabbit Monoclonal Antibody - Images**

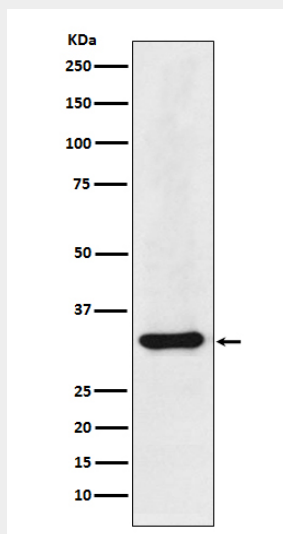




All lanes use the Antibody at 1:6K dilution for 1 hour at room temperature.



All lanes use the Antibody at 1:6K dilution for 1 hour at room temperature.



Western blot analysis of hnRNP A1 expression in HepG2 cell lysate.