

**Anti-LXR alpha NR1H3 Rabbit Monoclonal Antibody**  
**Catalog # ABO14009****Specification**

---

**Anti-LXR alpha NR1H3 Rabbit Monoclonal Antibody - Product Information**

Application	WB, IF, ICC, FC
Primary Accession	<a href="#">Q13133</a>
Host	Rabbit
Isotype	Rabbit IgG
Reactivity	Rat, Human, Mouse
Clonality	Monoclonal
Format	Liquid

**Description**

Anti-LXR alpha NR1H3 Rabbit Monoclonal Antibody . Tested in WB, ICC/IF, Flow Cytometry applications. This antibody reacts with Human, Mouse, Rat.

**Anti-LXR alpha NR1H3 Rabbit Monoclonal Antibody - Additional Information**

**Gene ID** 10062

**Other Names**

Oxysterols receptor LXR-alpha, Liver X receptor alpha, Nuclear receptor subfamily 1 group H member 3, NR1H3, LXRA

**Calculated MW**

50396 MW KDa

**Application Details**

WB 1:500-1:2000<br>ICC/IF 1:50-1:200<br>FC 1:50

**Subcellular Localization**

Nucleus.

**Tissue Specificity**

Visceral organs specific expression. Strong expression was found in liver, kidney and intestine followed by spleen and to a lesser extent the adrenals.

**Contents**

Rabbit IgG in phosphate buffered saline, pH 7.4, 150mM NaCl, 0.02% sodium azide and 50% glycerol, 0.4-0.5mg/ml BSA.

**Immunogen**

A synthesized peptide derived from human LXR alpha

**Purification**

Affinity-chromatography

**Storage**

**Store at -20°C for one year. For short term storage and frequent use, store at 4°C for**

up to one month. Avoid repeated  
freeze-thaw cycles.

## Anti-LXR alpha NR1H3 Rabbit Monoclonal Antibody - Protein Information

**Name** NR1H3

**Synonyms** LXRA

### Function

Nuclear receptor that exhibits a ligand-dependent transcriptional activation activity (PubMed:<a href="http://www.uniprot.org/citations/19481530" target="\_blank">19481530</a>, PubMed:<a href="http://www.uniprot.org/citations/25661920" target="\_blank">25661920</a>, PubMed:<a href="http://www.uniprot.org/citations/37478846" target="\_blank">37478846</a>). Interaction with retinoic acid receptor (RXR) shifts RXR from its role as a silent DNA-binding partner to an active ligand- binding subunit in mediating retinoid responses through target genes defined by LXRES (PubMed:<a href="http://www.uniprot.org/citations/37478846" target="\_blank">37478846</a>). LXRES are DR4-type response elements characterized by direct repeats of two similar hexanuclotide half-sites spaced by four nucleotides (By similarity). Plays an important role in the regulation of cholesterol homeostasis, regulating cholesterol uptake through MYLIP-dependent ubiquitination of LDLR, VLDLR and LRP8 (PubMed:<a href="http://www.uniprot.org/citations/19481530" target="\_blank">19481530</a>). Interplays functionally with RORA for the regulation of genes involved in liver metabolism (By similarity). Induces LPCAT3-dependent phospholipid remodeling in endoplasmic reticulum (ER) membranes of hepatocytes, driving SREBF1 processing and lipogenesis (By similarity). Via LPCAT3, triggers the incorporation of arachidonate into phosphatidylcholines of ER membranes, increasing membrane dynamics and enabling triacylglycerols transfer to nascent very low-density lipoprotein (VLDL) particles. Via LPCAT3 also counteracts lipid-induced ER stress response and inflammation, likely by modulating SRC kinase membrane compartmentalization and limiting the synthesis of lipid inflammatory mediators (By similarity).

### Cellular Location

Nucleus {ECO:0000255|PROSITE-ProRule:PRU00407, ECO:0000269|PubMed:25661920}.  
Cytoplasm {ECO:0000250|UniProtKB:Q9Z0Y9}

### Tissue Location

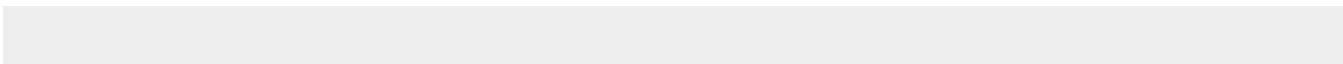
Visceral organs specific expression. Strong expression was found in liver, kidney and intestine followed by spleen and to a lesser extent the adrenals

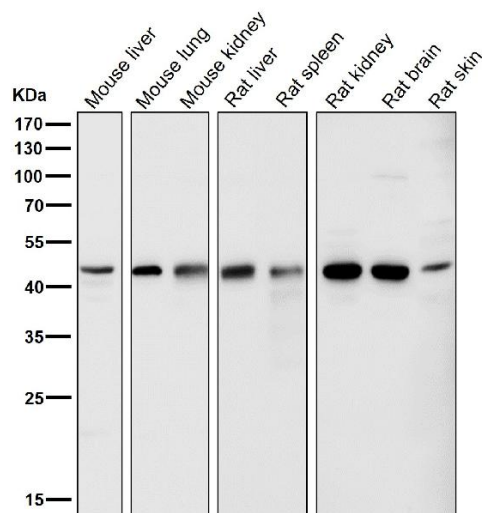
## Anti-LXR alpha NR1H3 Rabbit Monoclonal Antibody - Protocols

Provided below are standard protocols that you may find useful for product applications.

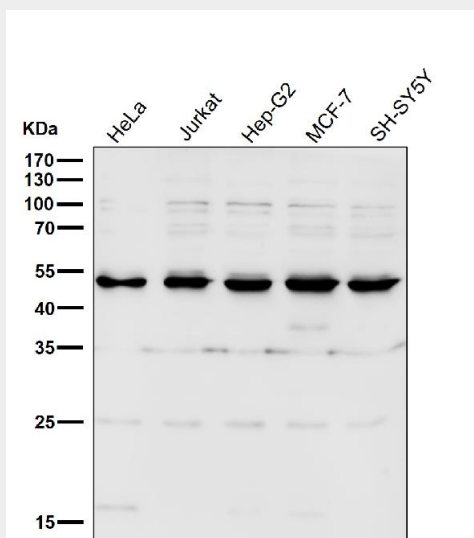
- [Western Blot](#)
- [Blocking Peptides](#)
- [Dot Blot](#)
- [Immunohistochemistry](#)
- [Immunofluorescence](#)
- [Immunoprecipitation](#)
- [Flow Cytometry](#)
- [Cell Culture](#)

## Anti-LXR alpha NR1H3 Rabbit Monoclonal Antibody - Images

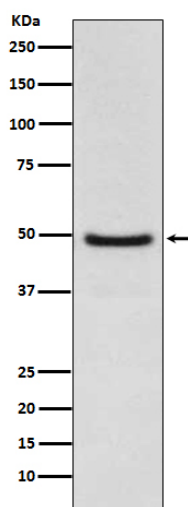




All lanes use the Antibody at 1:5K dilution for 1 hour at room temperature.



All lanes use the Antibody at 1:5K dilution for 1 hour at room temperature.



Western blot analysis of LXR alpha expression in Jurkat cell lysate.