

Anti-Caveolin-3 CAV3 Rabbit Monoclonal Antibody
Catalog # ABO14016**Specification**

Anti-Caveolin-3 CAV3 Rabbit Monoclonal Antibody - Product Information

Application	WB, IP
Primary Accession	P56539
Host	Rabbit
Isotype	Rabbit IgG
Reactivity	Rat, Human, Mouse
Clonality	Monoclonal
Format	Liquid

Description

Anti-Caveolin-3 CAV3 Rabbit Monoclonal Antibody . Tested in WB, IP applications. This antibody reacts with Human, Mouse, Rat.

Anti-Caveolin-3 CAV3 Rabbit Monoclonal Antibody - Additional Information

Gene ID 859

Other Names

Caveolin-3, M-caveolin, CAV3

Calculated MW

17259 MW KDa

Application Details

WB 1:500-1:2000
IP 1:50

Subcellular Localization

Golgi apparatus membrane ; Peripheral membrane protein. Cell membrane ; Peripheral membrane protein. Membrane, caveola ; Peripheral membrane protein. Potential hairpin-like structure in the membrane. Membrane protein of caveolae (By similarity)..

Tissue Specificity

Expressed predominantly in muscle..

Contents

Rabbit IgG in phosphate buffered saline, pH 7.4, 150mM NaCl, 0.02% sodium azide and 50% glycerol, 0.4-0.5mg/ml BSA.

Immunogen

A synthesized peptide derived from human Caveolin-3

Purification

Affinity-chromatography

Storage

Store at -20°C for one year. For short term storage and frequent use, store at 4°C for

up to one month. Avoid repeated
freeze-thaw cycles.

Anti-Caveolin-3 CAV3 Rabbit Monoclonal Antibody - Protein Information

Name CAV3

Function

May act as a scaffolding protein within caveolar membranes. Interacts directly with G-protein alpha subunits and can functionally regulate their activity. May also regulate voltage-gated potassium channels. Plays a role in the sarcolemma repair mechanism of both skeletal muscle and cardiomyocytes that permits rapid resealing of membranes disrupted by mechanical stress (By similarity). Mediates the recruitment of CAVIN2 and CAVIN3 proteins to the caveolae (PubMed:19262564).

Cellular Location

Golgi apparatus membrane; Peripheral membrane protein. Cell membrane {ECO:0000250|UniProtKB:P51638}; Peripheral membrane protein. Membrane, caveola {ECO:0000250|UniProtKB:P51637}; Peripheral membrane protein. Cell membrane, sarcolemma {ECO:0000250|UniProtKB:P51637}. Note=Potential hairpin-like structure in the membrane. Membrane protein of caveolae (By similarity)

Tissue Location

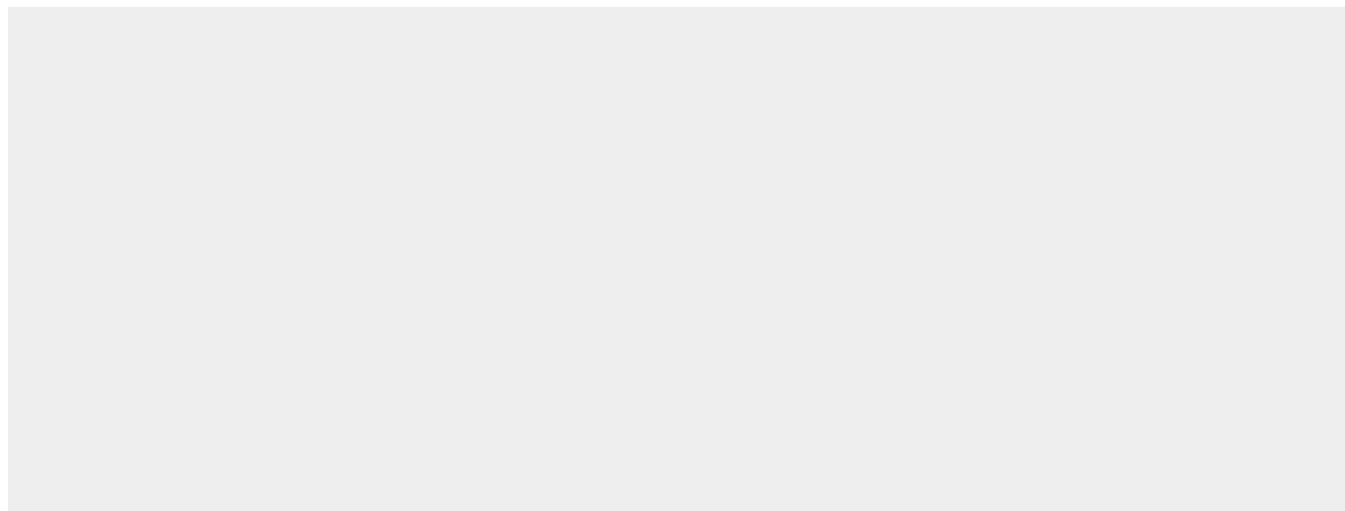
Expressed predominantly in muscle.

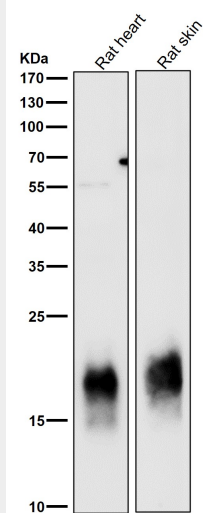
Anti-Caveolin-3 CAV3 Rabbit Monoclonal Antibody - Protocols

Provided below are standard protocols that you may find useful for product applications.

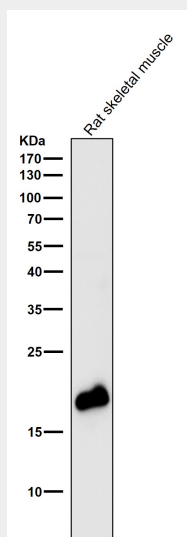
- [Western Blot](#)
- [Blocking Peptides](#)
- [Dot Blot](#)
- [Immunohistochemistry](#)
- [Immunofluorescence](#)
- [Immunoprecipitation](#)
- [Flow Cytometry](#)
- [Cell Culture](#)

Anti-Caveolin-3 CAV3 Rabbit Monoclonal Antibody - Images

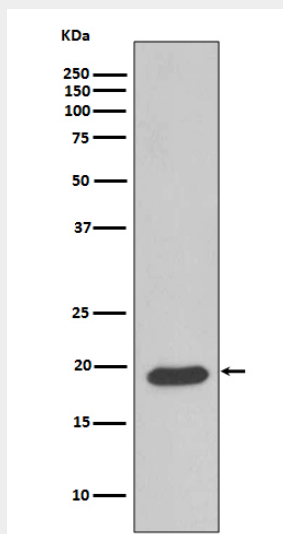




All lanes use the Antibody at 1:3K dilution for 1 hour at room temperature.



All lanes use the Antibody at 1:3K dilution for 1 hour at room temperature.



Western blot analysis of Caveolin 3 expression in Human fetal heart lysate.