

**Anti-Prohibitin PHB Rabbit Monoclonal Antibody**  
**Catalog # ABO14030****Specification****Anti-Prohibitin PHB Rabbit Monoclonal Antibody - Product Information**

Application	WB, IHC, IF, ICC, IP, FC
Primary Accession	<a href="#">P35232</a>
Host	Rabbit
Isotype	Rabbit IgG
Reactivity	Rat, Human, Mouse
Clonality	Monoclonal
Format	Liquid

**Description**

Anti-Prohibitin PHB Rabbit Monoclonal Antibody . Tested in WB, IHC, ICC/IF, IP, Flow Cytometry applications. This antibody reacts with Human, Mouse, Rat.

**Anti-Prohibitin PHB Rabbit Monoclonal Antibody - Additional Information**

**Gene ID** 5245

**Other Names**

Prohibitin 1, PHB1 {ECO:0000303|PubMed:28017329, ECO:0000312|HGNC:HGNC:8912}

**Calculated MW**

29804 MW KDa

**Application Details**

WB 1:500-1:2000<br>IHC 1:50-1:200<br>ICC/IF 1:50-1:200<br>IP 1:30<br>FC 1:30

**Subcellular Localization**

Mitochondrion inner membrane.

**Tissue Specificity**

Widely expressed in different tissues.

**Contents**

Rabbit IgG in phosphate buffered saline, pH 7.4, 150mM NaCl, 0.02% sodium azide and 50% glycerol, 0.4-0.5mg/ml BSA.

**Immunogen**

A synthesized peptide derived from human Prohibitin

**Purification**

Affinity-chromatography

**Storage**

**Store at -20°C for one year. For short term storage and frequent use, store at 4°C for up to one month. Avoid repeated freeze-thaw cycles.**

## Anti-Prohibitin PHB Rabbit Monoclonal Antibody - Protein Information

**Name** PHB1 {ECO:0000303|PubMed:28017329, ECO:0000312|HGNC:HGNC:8912}

### Function

Protein with pleiotropic attributes mediated in a cell- compartment- and tissue-specific manner, which include the plasma membrane-associated cell signaling functions, mitochondrial chaperone, and transcriptional co-regulator of transcription factors in the nucleus (PubMed:<a href="http://www.uniprot.org/citations/11302691" target="\_blank">11302691</a>, PubMed:<a href="http://www.uniprot.org/citations/20959514" target="\_blank">20959514</a>, PubMed:<a href="http://www.uniprot.org/citations/28017329" target="\_blank">28017329</a>, PubMed:<a href="http://www.uniprot.org/citations/31522117" target="\_blank">31522117</a>). Plays a role in adipose tissue and glucose homeostasis in a sex-specific manner (By similarity). Contributes to pulmonary vascular remodeling by accelerating proliferation of pulmonary arterial smooth muscle cells (By similarity).

### Cellular Location

Mitochondrion inner membrane. Nucleus. Cytoplasm. Cell membrane

### Tissue Location

Widely expressed in different tissues.

## Anti-Prohibitin PHB Rabbit Monoclonal Antibody - Protocols

Provided below are standard protocols that you may find useful for product applications.

- [Western Blot](#)
- [Blocking Peptides](#)
- [Dot Blot](#)
- [Immunohistochemistry](#)
- [Immunofluorescence](#)
- [Immunoprecipitation](#)
- [Flow Cytometry](#)
- [Cell Culture](#)

## Anti-Prohibitin PHB Rabbit Monoclonal Antibody - Images

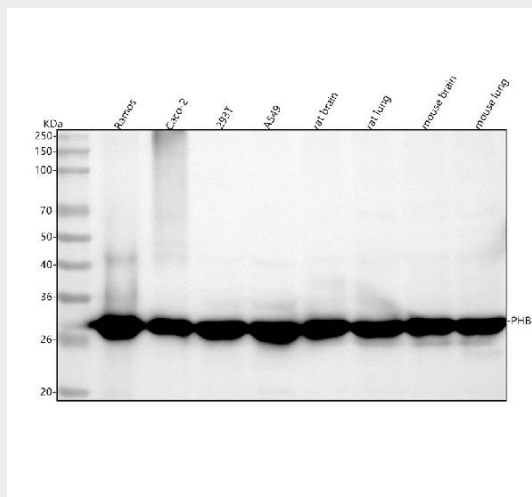


Figure 1. Western blot analysis of PHB using anti-PHB antibody (M01178).

Electrophoresis was performed on a 5-20% SDS-PAGE gel at 70V (Stacking gel) / 90V (Resolving gel) for 2-3 hours. The sample well of each lane was loaded with 30 ug of sample under reducing conditions.

Lane 1: human Ramos whole cell lysates,

Lane 2: human Caco-2 whole cell lysates,

Lane 3: human 293T whole cell lysates,

Lane 4: human A549 whole cell lysates,

Lane 5: rat brain tissue lysates,

Lane 6: rat lung tissue lysates,

Lane 7: mouse brain tissue lysates,

Lane 8: mouse lung tissue lysates.

After electrophoresis, proteins were transferred to a nitrocellulose membrane at 150 mA for 50-90 minutes. Blocked the membrane with 5% non-fat milk/TBS for 1.5 hour at RT. The membrane was incubated with rabbit anti-PHB antigen affinity purified monoclonal antibody (Catalog # M01178) at 1:500 overnight at 4°C, then washed with TBS-0.1%Tween 3 times with 5 minutes each and probed with a goat anti-rabbit IgG-HRP secondary antibody at a dilution of 1:5000 for 1.5 hour at RT. The signal is developed using an Enhanced Chemiluminescent detection (ECL) kit (Catalog # EK1002) with Tanon 5200 system. A specific band was detected for PHB at approximately 30 kDa. The expected band size for PHB is at 30 kDa.

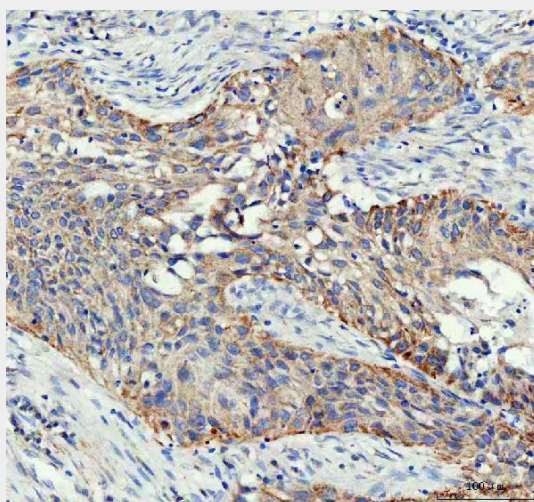


Figure 2. IHC analysis of PMB using anti-PMB antibody (M01178).

PMB was detected in a paraffin-embedded section of human bladder cancer tissue. Heat mediated antigen retrieval was performed in EDTA buffer (pH 8.0, epitope retrieval solution). The tissue section was blocked with 10% goat serum. The tissue section was then incubated with 1:50 rabbit anti-PMB Antibody (M01178) overnight at 4°C. Peroxidase Conjugated Goat Anti-rabbit IgG was used as secondary antibody and incubated for 30 minutes at 37°C. The tissue section was developed using HRP Conjugated Rabbit IgG Super Vision Assay Kit (Catalog # SV0002) with DAB as the chromogen.