

**Anti-Galectin 3 LGALS3 Rabbit Monoclonal Antibody**  
**Catalog # ABO14051****Specification****Anti-Galectin 3 LGALS3 Rabbit Monoclonal Antibody - Product Information**

Application	WB, IF, ICC, FC
Primary Accession	<a href="#">P17931</a>
Host	Rabbit
Isotype	Rabbit IgG
Reactivity	Rat, Human
Clonality	Monoclonal
Format	Liquid

**Description**

Anti-Galectin 3 LGALS3 Rabbit Monoclonal Antibody . Tested in WB, ICC/IF, Flow Cytometry applications. This antibody reacts with Human, Rat.

**Anti-Galectin 3 LGALS3 Rabbit Monoclonal Antibody - Additional Information**

**Gene ID** 3958

**Other Names**

Galectin-3, Gal-3, 35 kDa lectin, Carbohydrate-binding protein 35, CBP 35, Galactose-specific lectin 3, Galactoside-binding protein, GALBP, IgE-binding protein, L-31, Laminin-binding protein, Lectin L-29, Mac-2 antigen, LGALS3 ([http://www.genenames.org/cgi-bin/gene\\_symbol\\_report?hgnc\\_id=6563](http://www.genenames.org/cgi-bin/gene_symbol_report?hgnc_id=6563)), MAC2

**Calculated MW**

26152 MW KDa

**Application Details**

WB 1:500-1:2000<br>ICC/IF 1:50-1:200<br>FC 1:50

**Subcellular Localization**

Cytoplasm. Nucleus. Secreted. Secreted by a non-classical secretory pathway and associates with the cell surface.

**Tissue Specificity**

A major expression is found in the colonic epithelium. It is also abundant in the activated macrophages. Expressed in fetal membranes..

**Contents**

Rabbit IgG in phosphate buffered saline, pH 7.4, 150mM NaCl, 0.02% sodium azide and 50% glycerol, 0.4-0.5mg/ml BSA.

**Immunogen**

A synthesized peptide derived from human Galectin 3

**Purification**

Affinity-chromatography

Storage

**Store at -20°C for one year. For short term storage and frequent use, store at 4°C for up to one month. Avoid repeated freeze-thaw cycles.**

## **Anti-Galectin 3 LGALS3 Rabbit Monoclonal Antibody - Protein Information**

**Name** LGALS3 ([HGNC:6563](#))

**Synonyms** MAC2

### **Function**

Galactose-specific lectin which binds IgE. May mediate with the alpha-3, beta-1 integrin the stimulation by CSPG4 of endothelial cells migration. Together with DMBT1, required for terminal differentiation of columnar epithelial cells during early embryogenesis (By similarity). In the nucleus: acts as a pre-mRNA splicing factor. Involved in acute inflammatory responses including neutrophil activation and adhesion, chemoattraction of monocytes macrophages, opsonization of apoptotic neutrophils, and activation of mast cells. Together with TRIM16, coordinates the recognition of membrane damage with mobilization of the core autophagy regulators ATG16L1 and BECN1 in response to damaged endomembranes.

### **Cellular Location**

Cytoplasm. Nucleus. Secreted. Note=Secreted by a non- classical secretory pathway and associates with the cell surface. Can be secreted; the secretion is dependent on protein unfolding and facilitated by the cargo receptor TMED10; it results in protein translocation from the cytoplasm into the ERGIC (endoplasmic reticulum- Golgi intermediate compartment) followed by vesicle entry and secretion (PubMed:32272059).

### **Tissue Location**

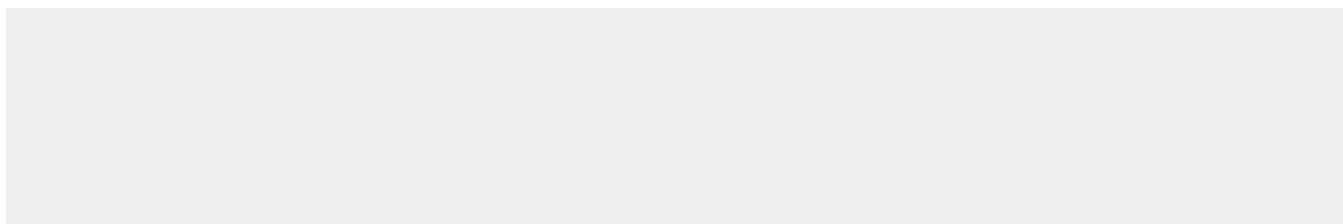
A major expression is found in the colonic epithelium. It is also abundant in the activated macrophages. Expressed in fetal membranes.

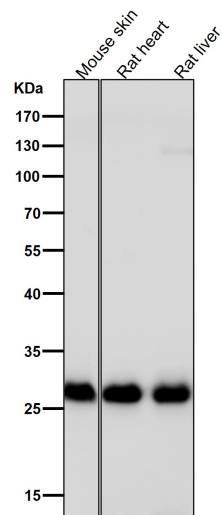
## **Anti-Galectin 3 LGALS3 Rabbit Monoclonal Antibody - Protocols**

Provided below are standard protocols that you may find useful for product applications.

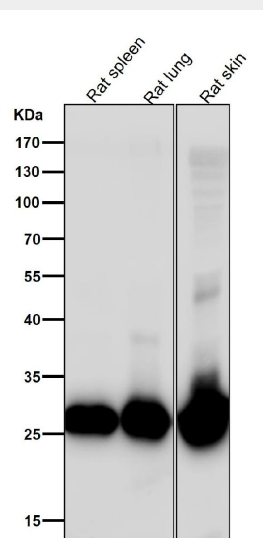
- [Western Blot](#)
- [Blocking Peptides](#)
- [Dot Blot](#)
- [Immunohistochemistry](#)
- [Immunofluorescence](#)
- [Immunoprecipitation](#)
- [Flow Cytometry](#)
- [Cell Culture](#)

## **Anti-Galectin 3 LGALS3 Rabbit Monoclonal Antibody - Images**





All lanes use the Antibody at 1:5K dilution for 1 hour at room temperature.



All lanes use the Antibody at 1:5K dilution for 1 hour at room temperature.

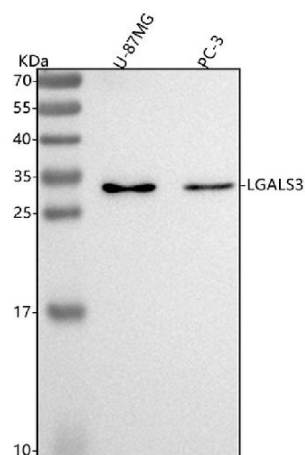


Figure 1. Western blot analysis of LGALS3 using anti-LGALS3 antibody (M00621). Electrophoresis was performed on a 5-20% SDS-PAGE gel at 70V (Stacking gel) / 90V (Resolving

gel) for 2-3 hours. The sample well of each lane was loaded with 30 ug of sample under reducing conditions.

Lane 1: human U-87MG whole cell lysates,

Lane 2: human PC-3 whole cell lysates.

After electrophoresis, proteins were transferred to a nitrocellulose membrane at 150 mA for 50-90 minutes. Blocked the membrane with 5% non-fat milk/TBS for 1.5 hour at RT. The membrane was incubated with rabbit anti-LGALS3 antigen affinity purified monoclonal antibody (Catalog # M00621) at 1:500 overnight at 4°C, then washed with TBS-0.1%Tween 3 times with 5 minutes each and probed with a goat anti-rabbit IgG-HRP secondary antibody at a dilution of 1:5000 for 1.5 hour at RT. The signal is developed using an Enhanced Chemiluminescent detection (ECL) kit (Catalog # EK1002) with Tanon 5200 system. A specific band was detected for LGALS3 at approximately 29 kDa. The expected band size for LGALS3 is at 26 kDa.