

Anti-Vitronectin VTN Rabbit Monoclonal Antibody
Catalog # ABO14077**Specification**

Anti-Vitronectin VTN Rabbit Monoclonal Antibody - Product Information

Application	WB, IHC, IF, ICC
Primary Accession	P04004
Host	Rabbit
Isotype	Rabbit IgG
Reactivity	Rat, Human, Mouse
Clonality	Monoclonal
Format	Liquid

Description

Anti-Vitronectin VTN Rabbit Monoclonal Antibody . Tested in WB, IHC, ICC/IF applications. This antibody reacts with Human, Mouse, Rat.

Anti-Vitronectin VTN Rabbit Monoclonal Antibody - Additional Information

Gene ID 7448

Other Names

Vitronectin, VN, S-protein, Serum-spreading factor, V75, Vitronectin V65 subunit, Vitronectin V10 subunit, Somatomedin-B, VTN

Calculated MW

54306 MW KDa

Application Details

WB 1:500-1:2000
IHC 1:50-1:200
ICC/IF 1:50-1:200

Subcellular Localization

Secreted, extracellular space.

Tissue Specificity

Plasma.

Contents

Rabbit IgG in phosphate buffered saline, pH 7.4, 150mM NaCl, 0.02% sodium azide and 50% glycerol, 0.4-0.5mg/ml BSA.

Immunogen

A synthesized peptide derived from human Vitronectin

Purification

Affinity-chromatography

Storage

Store at -20°C for one year. For short term storage and frequent use, store at 4°C for up to one month. Avoid repeated

freeze-thaw cycles.

Anti-Vitronectin VTN Rabbit Monoclonal Antibody - Protein Information

Name VTN

Function

Vitronectin is a cell adhesion and spreading factor found in serum and tissues. Vitronectin interact with glycosaminoglycans and proteoglycans. Is recognized by certain members of the integrin family and serves as a cell-to-substrate adhesion molecule. Inhibitor of the membrane-damaging effect of the terminal cytolytic complement pathway.

Cellular Location

Secreted, extracellular space

Tissue Location

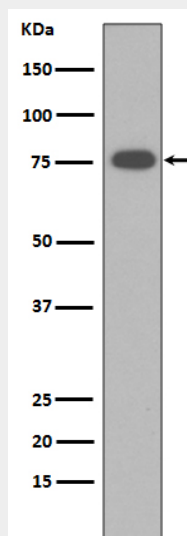
Expressed in the retina pigment epithelium (at protein level) (PubMed:25136834). Expressed in plasma (at protein level) (PubMed:2448300). Expressed in serum (at protein level) (PubMed:29567995).

Anti-Vitronectin VTN Rabbit Monoclonal Antibody - Protocols

Provided below are standard protocols that you may find useful for product applications.

- [Western Blot](#)
- [Blocking Peptides](#)
- [Dot Blot](#)
- [Immunohistochemistry](#)
- [Immunofluorescence](#)
- [Immunoprecipitation](#)
- [Flow Cytometry](#)
- [Cell Culture](#)

Anti-Vitronectin VTN Rabbit Monoclonal Antibody - Images



Western blot analysis of Vitronectin expression in human Serum membrane lysate.

