

**Anti-Smac/Diablo Rabbit Monoclonal Antibody**  
**Catalog # ABO14084****Specification****Anti-Smac/Diablo Rabbit Monoclonal Antibody - Product Information**

Application	WB, IHC, IF, ICC, IP, FC
Primary Accession	<a href="#">Q9NR28</a>
Host	Rabbit
Isotype	Rabbit IgG
Reactivity	Rat, Human, Mouse
Clonality	Monoclonal
Format	Liquid

**Description**

Anti-Smac/Diablo Rabbit Monoclonal Antibody . Tested in WB, IHC, ICC/IF, IP, Flow Cytometry applications. This antibody reacts with Human, Mouse, Rat.

**Anti-Smac/Diablo Rabbit Monoclonal Antibody - Additional Information**

**Gene ID** 56616

**Other Names**

Diablo IAP-binding mitochondrial protein {ECO:0000312|HGNC:HGNC:21528}, Diablo homolog, mitochondrial {ECO:0000312|HGNC:HGNC:21528}, Direct IAP-binding protein with low pI {ECO:0000312|HGNC:HGNC:21528}, Second mitochondria-derived activator of caspase, Smac, Diablo IAP-binding mitochondrial protein, cleaved form, DIABLO ([http://www.genenames.org/cgi-bin/gene\\_symbol\\_report?hgnc\\_id=21528](http://www.genenames.org/cgi-bin/gene_symbol_report?hgnc_id=21528))

**Calculated MW**

27131 MW KDa

**Application Details**

WB 1:1000-1:5000<br>IHC 1:50-1:200<br>ICC/IF 1:100-1:500<br>IP 1:50<br>FC 1:50

**Subcellular Localization**

Mitochondrion. Released into the cytosol when cells undergo apoptosis.

**Tissue Specificity**

Ubiquitously expressed with highest expression in testis. Expression is also high in heart, liver, kidney, spleen, prostate and ovary. Low in brain, lung, thymus and peripheral blood leukocytes. Isoform 3 is ubiquitously expressed..

**Contents**

Rabbit IgG in phosphate buffered saline, pH 7.4, 150mM NaCl, 0.02% sodium azide and 50% glycerol, 0.4-0.5mg/ml BSA.

**Immunogen**

A synthesized peptide derived from human Smac/Diablo

**Purification**

Affinity-chromatography

**Storage**

**Store at -20°C for one year. For short term storage and frequent use, store at 4°C for up to one month. Avoid repeated freeze-thaw cycles.**

**Anti-Smac/Diablo Rabbit Monoclonal Antibody - Protein Information****Name** DIABLO ([HGNC:21528](#))**Function**

Promotes apoptosis by activating caspases in the cytochrome c/Apaf-1/caspase-9 pathway. Acts by opposing the inhibitory activity of inhibitor of apoptosis proteins (IAP). Inhibits the activity of BIRC6/BRUCE by inhibiting its binding to caspases (PubMed:<a href="http://www.uniprot.org/citations/15200957" target="\_blank">15200957</a>, PubMed:<a href="http://www.uniprot.org/citations/36758104" target="\_blank">36758104</a>, PubMed:<a href="http://www.uniprot.org/citations/36758105" target="\_blank">36758105</a>, PubMed:<a href="http://www.uniprot.org/citations/36758106" target="\_blank">36758106</a>).

**Cellular Location**

Mitochondrion. Cytoplasm, cytosol Note=Released into the cytosol in a PARL-dependent manner when cells undergo apoptosis.

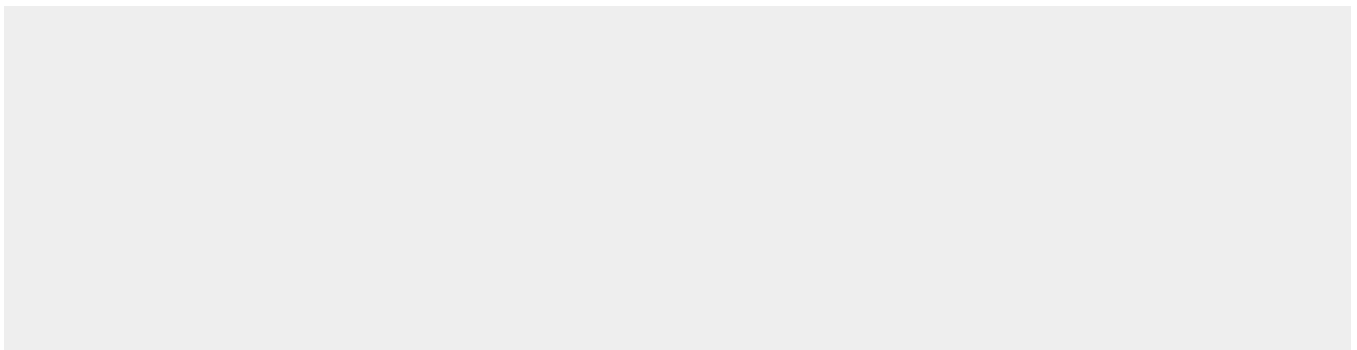
**Tissue Location**

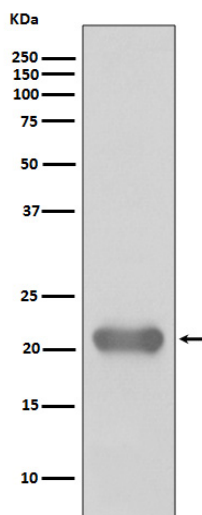
Ubiquitously expressed with highest expression in testis. Expression is also high in heart, liver, kidney, spleen, prostate and ovary. Low in brain, lung, thymus and peripheral blood leukocytes. Isoform 3 is ubiquitously expressed

**Anti-Smac/Diablo Rabbit Monoclonal Antibody - Protocols**

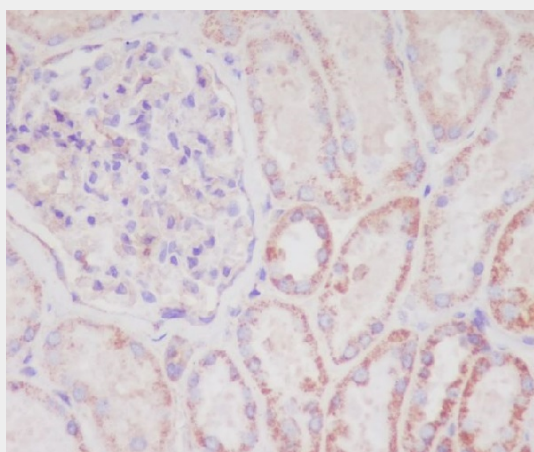
Provided below are standard protocols that you may find useful for product applications.

- [Western Blot](#)
- [Blocking Peptides](#)
- [Dot Blot](#)
- [Immunohistochemistry](#)
- [Immunofluorescence](#)
- [Immunoprecipitation](#)
- [Flow Cytometry](#)
- [Cell Culture](#)

**Anti-Smac/Diablo Rabbit Monoclonal Antibody - Images**



Western blot analysis of Smac/Diablo expression in Jurkat cell lysate.



Immunohistochemical analysis of paraffin-embedded human kidney, using Smac/Diablo Antibody.