

**Anti-HSPB8/HSP22 Rabbit Monoclonal Antibody**  
**Catalog # ABO14092****Specification****Anti-HSPB8/HSP22 Rabbit Monoclonal Antibody - Product Information**

Application	WB, IHC, IF, ICC
Primary Accession	<a href="#">Q9UJY1</a>
Host	Rabbit
Isotype	Rabbit IgG
Reactivity	Rat, Human, Mouse
Clonality	Monoclonal
Format	Liquid

**Description**

Anti-HSPB8/HSP22 Rabbit Monoclonal Antibody . Tested in WB, IHC, ICC/IF applications. This antibody reacts with Human, Mouse, Rat.

**Anti-HSPB8/HSP22 Rabbit Monoclonal Antibody - Additional Information**

**Gene ID** 26353

**Other Names**

Heat shock protein beta-8, HspB8, Alpha-crystallin C chain, E2-induced gene 1 protein, Heat shock protein family B member 8, Protein kinase H11, Small stress protein-like protein HSP22, HSPB8, CRYAC, E2IG1, HSP22

**Calculated MW**

21604 MW KDa

**Application Details**

WB 1:500-1:2000<br>IHC 1:50-1:100<br>ICC/IF 1:50-1:100

**Subcellular Localization**

Cytoplasm. Nucleus. Translocates to nuclear foci during heat shock.

**Tissue Specificity**

Predominantly expressed in skeletal muscle and heart..

**Contents**

Rabbit IgG in phosphate buffered saline, pH 7.4, 150mM NaCl, 0.02% sodium azide and 50% glycerol, 0.4-0.5mg/ml BSA.

**Immunogen**

A synthesized peptide derived from human HSPB8/HSP22

**Purification**

Affinity-chromatography

**Storage**

**Store at -20°C for one year. For short term storage and frequent use, store at 4°C for**

up to one month. Avoid repeated  
freeze-thaw cycles.

### Anti-HSPB8/HSP22 Rabbit Monoclonal Antibody - Protein Information

**Name** HSPB8

**Synonyms** CRYAC, E2IG1, HSP22

#### Function

Involved in the chaperone-assisted selective autophagy (CASA), a crucial process for protein quality control, particularly in mechanical strained cells and tissues such as muscle. Displays temperature-dependent chaperone activity.

#### Cellular Location

Cytoplasm. Nucleus Note=Translocates to nuclear foci during heat shock

#### Tissue Location

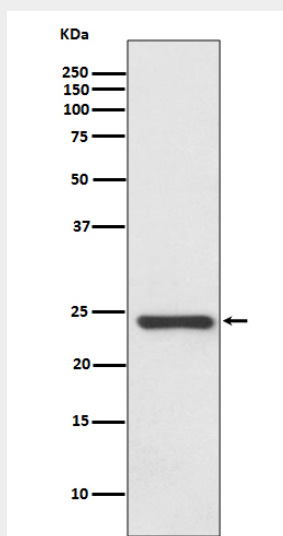
Predominantly expressed in skeletal muscle and heart.

### Anti-HSPB8/HSP22 Rabbit Monoclonal Antibody - Protocols

Provided below are standard protocols that you may find useful for product applications.

- [Western Blot](#)
- [Blocking Peptides](#)
- [Dot Blot](#)
- [Immunohistochemistry](#)
- [Immunofluorescence](#)
- [Immunoprecipitation](#)
- [Flow Cytometry](#)
- [Cell Culture](#)

### Anti-HSPB8/HSP22 Rabbit Monoclonal Antibody - Images



Western blot analysis of HSPB8/HSP22 expression in Human fetal heart lysate.