

**Anti-Lactoferrin LTF Rabbit Monoclonal Antibody**  
**Catalog # ABO14106****Specification****Anti-Lactoferrin LTF Rabbit Monoclonal Antibody - Product Information**

Application	WB, IHC, IP
Primary Accession	<a href="#">P02788</a>
Host	Rabbit
Isotype	Rabbit IgG
Reactivity	Human
Clonality	Monoclonal
Format	Liquid

**Description**

Anti-Lactoferrin LTF Rabbit Monoclonal Antibody . Tested in WB, IHC, IP applications. This antibody reacts with Human.

**Anti-Lactoferrin LTF Rabbit Monoclonal Antibody - Additional Information**

**Gene ID** 4057

**Other Names**

Lactotransferrin, Lactoferrin, 3.4.21.-, Growth-inhibiting protein 12, Talalactoferrin, Lactoferricin-H, Lfcin-H, Kaliocin-1, Lactoferroxin-A, Lactoferroxin-B, Lactoferroxin-C, LTF ([http://www.genenames.org/cgi-bin/gene\\_symbol\\_report?hgnc\\_id=6720](http://www.genenames.org/cgi-bin/gene_symbol_report?hgnc_id=6720) target="\_blank">HGNC:6720</a>), GIG12, LF

**Calculated MW**

78182 MW KDa

**Application Details**

WB 1:500-1:2000<br>IHC 1:50-1:200<br>IP 1:50

**Subcellular Localization**

Isoform 1: Secreted. Cytoplasmic granule. Secreted into most exocrine fluids by various endothelial cells. Stored in the secondary granules of neutrophils.

**Tissue Specificity**

High levels are found in saliva and tears, intermediate levels in serum and plasma, and low levels in urine. In kidney, detected in the distal collecting tubules in the medulla but not in the cortical region or in blood vessels. Detected in peripheral blood neutrophils (at protein level). Isoform 1 and isoform DeltaLf are expressed in breast, prostate, spleen, pancreas, kidney, small intestine, lung, skeletal muscle, uterus, thymus and fetal liver. Isoform 1 is expressed in brain, testis and peripheral blood leukocytes; isoform DeltaLf is barely detectable in these tissues. Isoform DeltaLf is expressed in placenta, liver and ovary; isoform 1 is barely detectable in these tissues. In kidney, isoform 1 is expressed at high levels in the collecting tubules of the medulla but at very low levels in the cortex..

**Contents**

Rabbit IgG in phosphate buffered saline, pH 7.4, 150mM NaCl, 0.02% sodium azide and 50%

glycerol, 0.4-0.5mg/ml BSA.

**Immunogen**

A synthesized peptide derived from human Lactoferrin

**Purification**

Affinity-chromatography

**Storage**

**Store at -20°C for one year. For short term storage and frequent use, store at 4°C for up to one month. Avoid repeated freeze-thaw cycles.**

**Anti-Lactoferrin LTF Rabbit Monoclonal Antibody - Protein Information**

**Name** LTF ([HGNC:6720](#))

**Synonyms** GIG12, LF

**Function**

Transferrins are iron binding transport proteins which can bind two Fe(3+) ions in association with the binding of an anion, usually bicarbonate.

**Cellular Location**

[Isoform 1]: Secreted. Cytoplasmic granule. Note=Secreted into most exocrine fluids by various endothelial cells Stored in the secondary granules of neutrophils

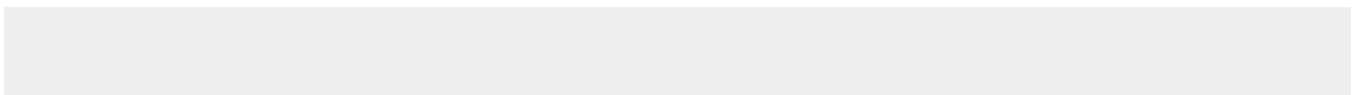
**Tissue Location**

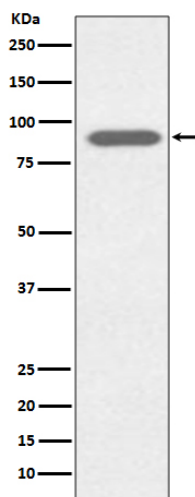
High levels are found in saliva and tears, intermediate levels in serum and plasma, and low levels in urine. In kidney, detected in the distal collecting tubules in the medulla but not in the cortical region or in blood vessels. Detected in peripheral blood neutrophils (at protein level). Isoform 1 and isoform DeltaLf are expressed in breast, prostate, spleen, pancreas, kidney, small intestine, lung, skeletal muscle, uterus, thymus and fetal liver Isoform 1 is expressed in brain, testis and peripheral blood leukocytes; isoform DeltaLf is barely detectable in these tissues Isoform DeltaLf is expressed in placenta, liver and ovary; isoform 1 is barely detectable in these tissues. In kidney, isoform 1 is expressed at high levels in the collecting tubules of the medulla but at very low levels in the cortex.

**Anti-Lactoferrin LTF Rabbit Monoclonal Antibody - Protocols**

Provided below are standard protocols that you may find useful for product applications.

- [Western Blot](#)
- [Blocking Peptides](#)
- [Dot Blot](#)
- [Immunohistochemistry](#)
- [Immunofluorescence](#)
- [Immunoprecipitation](#)
- [Flow Cytometry](#)
- [Cell Culture](#)

**Anti-Lactoferrin LTF Rabbit Monoclonal Antibody - Images**



Western blot analysis of Lactoferrin expression in HeLa cell lysate.