

**Anti-Cyclin A1/A2 Rabbit Monoclonal Antibody**  
**Catalog # ABO14126****Specification**

---

**Anti-Cyclin A1/A2 Rabbit Monoclonal Antibody - Product Information**

Application	WB, IHC, IP
Primary Accession	<a href="#">P20248/P78396</a>
Host	Rabbit
Isotype	Rabbit IgG
Reactivity	Human
Clonality	Monoclonal
Format	Liquid

**Description**

Anti-Cyclin A1/A2 Rabbit Monoclonal Antibody . Tested in WB, IHC, IP applications. This antibody reacts with Human.

**Anti-Cyclin A1/A2 Rabbit Monoclonal Antibody - Additional Information****Calculated MW**

48551 MW KDa

**Application Details**

WB 1:500-1:1000<br>IHC 1:100-1:500<br>IP 1:50

**Subcellular Localization**

Nucleus. Cytoplasm. Cytoplasmic when associated with SCAPER.

**Contents**

Rabbit IgG in phosphate buffered saline, pH 7.4, 150mM NaCl, 0.02% sodium azide and 50% glycerol, 0.4-0.5mg/ml BSA.

**Immunogen**

A synthesized peptide derived from human Cyclin A1/A2

**Purification**

Affinity-chromatography

**Storage**

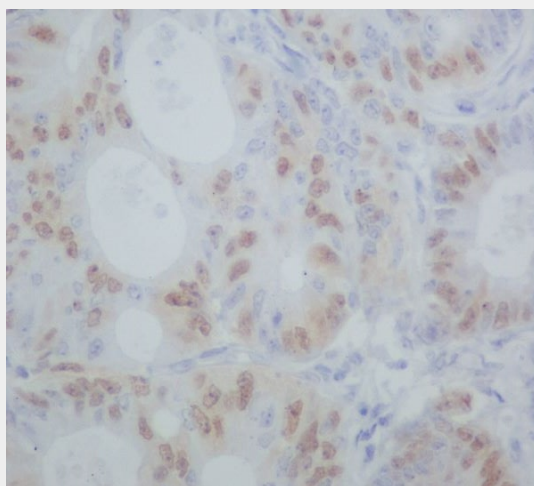
**Store at -20°C for one year. For short term storage and frequent use, store at 4°C for up to one month. Avoid repeated freeze-thaw cycles.**

**Anti-Cyclin A1/A2 Rabbit Monoclonal Antibody - Protein Information****Anti-Cyclin A1/A2 Rabbit Monoclonal Antibody - Protocols**

Provided below are standard protocols that you may find useful for product applications.

- [Western Blot](#)
- [Blocking Peptides](#)
- [Dot Blot](#)
- [Immunohistochemistry](#)
- [Immunofluorescence](#)
- [Immunoprecipitation](#)
- [Flow Cytometry](#)
- [Cell Culture](#)

#### **Anti-Cyclin A1/A2 Rabbit Monoclonal Antibody - Images**



Immunohistochemical analysis of paraffin-embedded human colon cancer, using Cyclin A1/A2 Antibody.

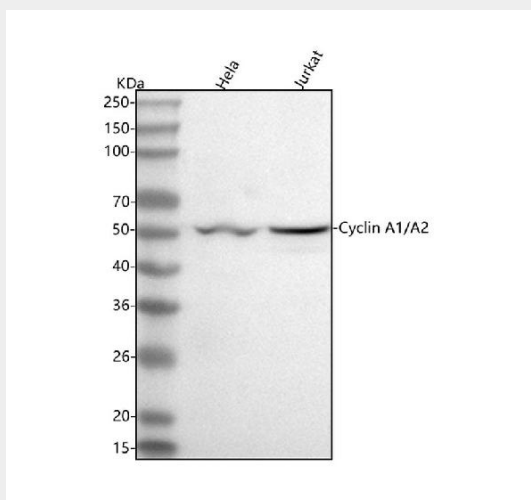


Figure 1. Western blot analysis of Cyclin A1/A2 using anti-Cyclin A1/A2 antibody (M00700). Electrophoresis was performed on a 5-20% SDS-PAGE gel at 70V (Stacking gel) / 90V (Resolving gel) for 2-3 hours. The sample well of each lane was loaded with 30 ug of sample under reducing conditions.

Lane 1: human Hela whole cell lysates,

Lane 2: human Jurkat whole cell lysates.

After electrophoresis, proteins were transferred to a nitrocellulose membrane at 150 mA for 50-90 minutes. Blocked the membrane with 5% non-fat milk/TBS for 1.5 hour at RT. The membrane was

incubated with rabbit anti-Cyclin A1/A2 antigen affinity purified monoclonal antibody (Catalog # M00700) at 1:500 overnight at 4°C, then washed with TBS-0.1%Tween 3 times with 5 minutes each and probed with a goat anti-rabbit IgG-HRP secondary antibody at a dilution of 1:5000 for 1.5 hour at RT. The signal is developed using an Enhanced Chemiluminescent detection (ECL) kit (Catalog # EK1002) with Tanon 5200 system. A specific band was detected for Cyclin A1/A2 at approximately 55 kDa. The expected band size for Cyclin A1/A2 is at 49 kDa.