

Anti-Histone H1.0 H1F0 Rabbit Monoclonal Antibody
Catalog # ABO14127**Specification****Anti-Histone H1.0 H1F0 Rabbit Monoclonal Antibody - Product Information**

Application	WB, IHC, IF, ICC
Primary Accession	P07305
Host	Rabbit
Isotype	Rabbit IgG
Reactivity	Rat, Human, Mouse
Clonality	Monoclonal
Format	Liquid

Description

Anti-Histone H1.0 H1F0 Rabbit Monoclonal Antibody . Tested in WB, IHC, ICC/IF applications. This antibody reacts with Human, Mouse, Rat.

Anti-Histone H1.0 H1F0 Rabbit Monoclonal Antibody - Additional Information

Gene ID 3005

Other Names

Histone H1.0, Histone H1', Histone H1(0), Histone H1.0, N-terminally processed, H1-0 (http://www.genenames.org/cgi-bin/gene_symbol_report?hgnc_id=4714)
HGNC:4714

Calculated MW

20863 MW KDa

Application Details

WB 1:1000-1:2000 IHC 1:50-1:200 ICC/IF 1:50-1:200

Subcellular Localization

Nucleus. Chromosome. The RNA edited version has been localized to nuclear speckles. During mitosis, it appears in the vicinity of condensed chromosomes.

Contents

Rabbit IgG in phosphate buffered saline, pH 7.4, 150mM NaCl, 0.02% sodium azide and 50% glycerol, 0.4-0.5mg/ml BSA.

Immunogen

A synthesized peptide derived from human Histone H1.0

Purification

Affinity-chromatography

Storage

Store at -20°C for one year. For short term storage and frequent use, store at 4°C for up to one month. Avoid repeated freeze-thaw cycles.

Anti-Histone H1.0 H1F0 Rabbit Monoclonal Antibody - Protein Information

Name H1-0 ([HGNC:4714](#))

Function

Histones H1 are necessary for the condensation of nucleosome chains into higher-order structures. The histones H1.0 are found in cells that are in terminal stages of differentiation or that have low rates of cell division.

Cellular Location

Nucleus {ECO:0000255|PROSITE-ProRule:PRU00837, ECO:0000269|PubMed:18993075}.

Chromosome {ECO:0000255|PROSITE- ProRule:PRU00837, ECO:0000269|PubMed:18993075}.

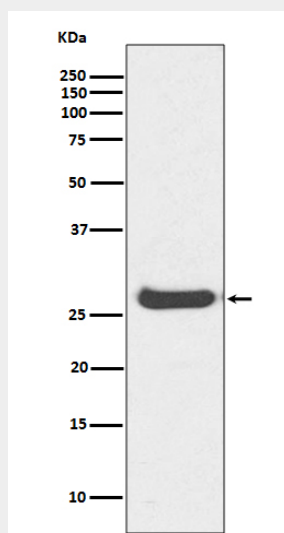
Note=The RNA edited version has been localized to nuclear speckles. During mitosis, it appears in the vicinity of condensed chromosomes

Anti-Histone H1.0 H1F0 Rabbit Monoclonal Antibody - Protocols

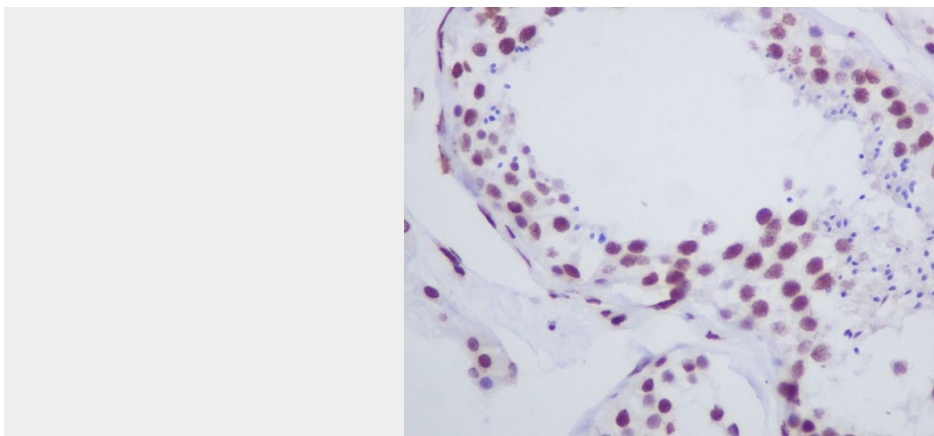
Provided below are standard protocols that you may find useful for product applications.

- [Western Blot](#)
- [Blocking Peptides](#)
- [Dot Blot](#)
- [Immunohistochemistry](#)
- [Immunofluorescence](#)
- [Immunoprecipitation](#)
- [Flow Cytometry](#)
- [Cell Culture](#)

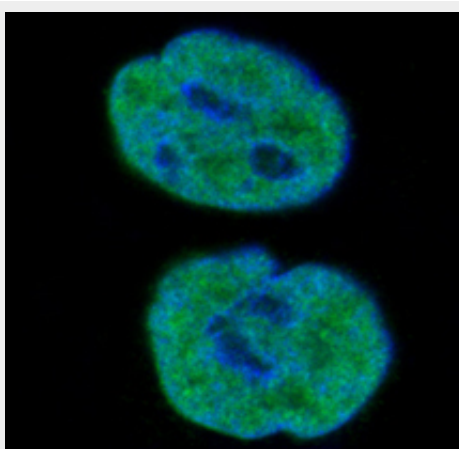
Anti-Histone H1.0 H1F0 Rabbit Monoclonal Antibody - Images



Western blot analysis of Histone H1.0 expression in Human kidney lysate.



Immunohistochemical analysis of paraffin-embedded human testis, using Histone H1.0 Antibody.



Immunofluorescent analysis of HepG2 cells, using Histone H1.0 Antibody.