

**Anti-Synaptophysin SYP Rabbit Monoclonal Antibody**  
**Catalog # ABO14141****Specification**

---

**Anti-Synaptophysin SYP Rabbit Monoclonal Antibody - Product Information**

Application	WB, IHC, IF, ICC, IP, FC
Primary Accession	<a href="#">P08247</a>
Host	Rabbit
Isotype	Rabbit IgG
Reactivity	Rat, Human, Mouse
Clonality	Monoclonal
Format	Liquid

**Description**

Anti-Synaptophysin SYP Rabbit Monoclonal Antibody . Tested in WB, IHC, ICC/IF, IP, Flow Cytometry applications. This antibody reacts with Human, Mouse, Rat.

**Anti-Synaptophysin SYP Rabbit Monoclonal Antibody - Additional Information**

**Gene ID** 6855

**Other Names**

Synaptophysin, Major synaptic vesicle protein p38, SYP

**Calculated MW**

33845 MW KDa

**Application Details**

WB 1:500-1:2000<br>IHC 1:50-1:200<br>ICC/IF 1:50-1:200<br>IP 1:50<br>FC 1:50

**Subcellular Localization**

Cytoplasmic vesicle, secretory vesicle, synaptic vesicle membrane; Multi-pass membrane protein. Cell junction, synapse, synaptosome.

**Tissue Specificity**

Characteristic of a type of small (30-80 nm) neurosecretory vesicles, including presynaptic vesicles, but also vesicles of various neuroendocrine cells of both neuronal and epithelial phenotype.

**Contents**

Rabbit IgG in phosphate buffered saline, pH 7.4, 150mM NaCl, 0.02% sodium azide and 50% glycerol, 0.4-0.5mg/ml BSA.

**Immunogen**

A synthesized peptide derived from human Synaptophysin

**Purification**

Affinity-chromatography

**Storage**

**Store at -20°C for one year. For short term**

**storage and frequent use, store at 4°C for up to one month. Avoid repeated freeze-thaw cycles.**

## **Anti-Synaptophysin SYP Rabbit Monoclonal Antibody - Protein Information**

**Name** SYP

### **Function**

Possibly involved in structural functions as organizing other membrane components or in targeting the vesicles to the plasma membrane. Involved in the regulation of short-term and long-term synaptic plasticity (By similarity).

### **Cellular Location**

Cytoplasmic vesicle, secretory vesicle, synaptic vesicle membrane; Multi-pass membrane protein. Synapse, synaptosome

### **Tissue Location**

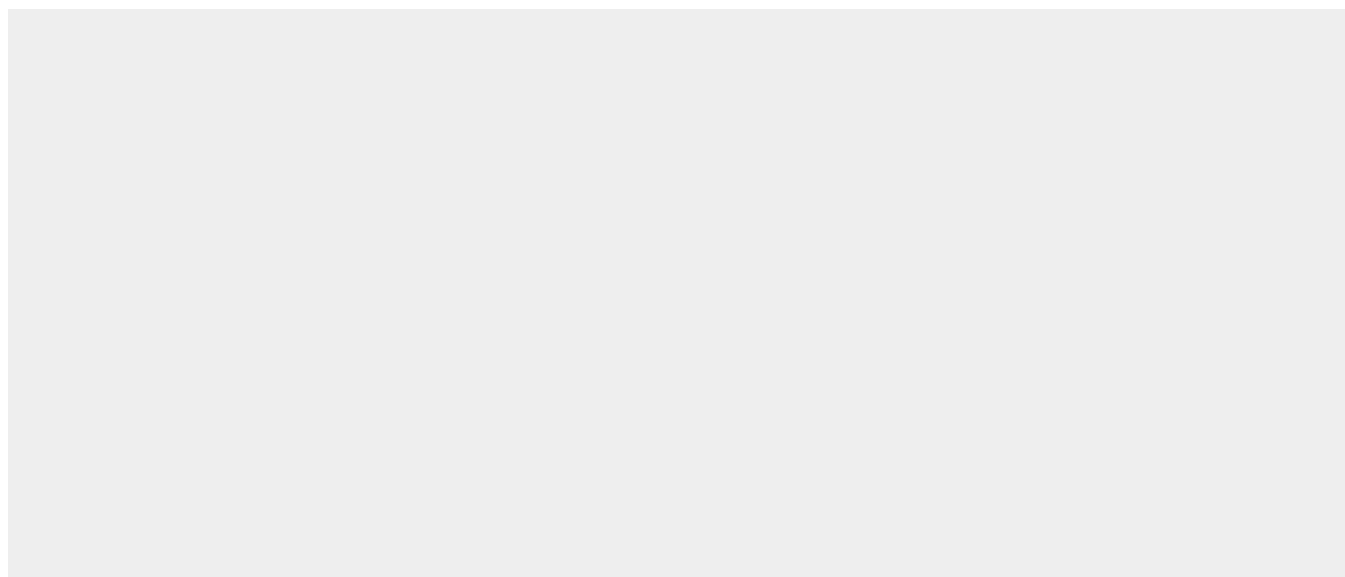
Expressed in the brain, with expression in the hippocampus, the neuropil in the dentate gyrus, where expression is higher in the outer half of the molecular layer than in the inner half, and in the neuropil of CA4 and CA3 (PubMed:8838578). Expressed in the putamen (at protein level) (PubMed:17296554)

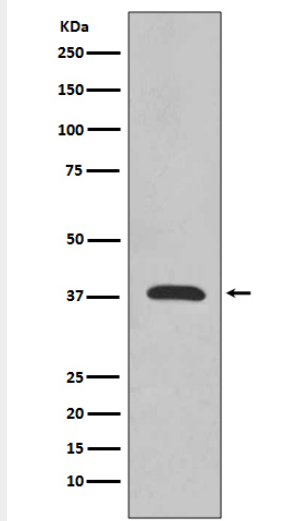
## **Anti-Synaptophysin SYP Rabbit Monoclonal Antibody - Protocols**

Provided below are standard protocols that you may find useful for product applications.

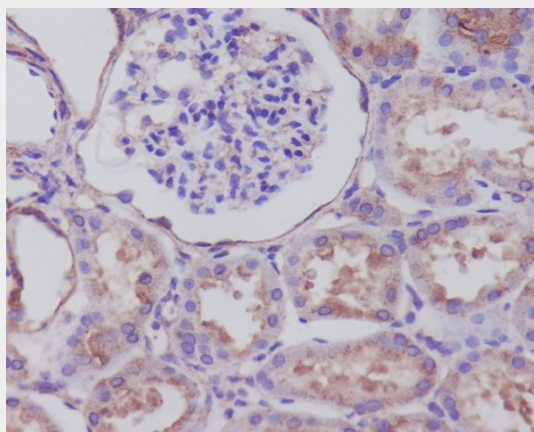
- [Western Blot](#)
- [Blocking Peptides](#)
- [Dot Blot](#)
- [Immunohistochemistry](#)
- [Immunofluorescence](#)
- [Immunoprecipitation](#)
- [Flow Cytometry](#)
- [Cell Culture](#)

## **Anti-Synaptophysin SYP Rabbit Monoclonal Antibody - Images**

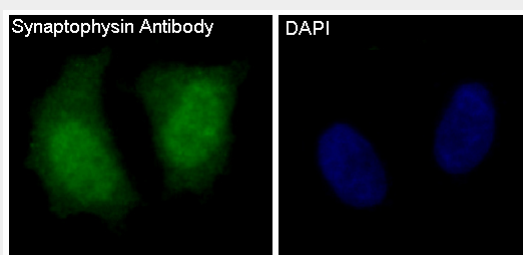




Western blot analysis of Synaptophysin expression in rat brain lysate.



Immunohistochemical analysis of paraffin-embedded human kidney, using Synaptophysin Antibody.



Immunofluorescent analysis of PC-12 cells, using Synaptophysin Antibody.