

Anti-Collagen XVII Rabbit Monoclonal Antibody
Catalog # ABO14147**Specification**

Anti-Collagen XVII Rabbit Monoclonal Antibody - Product Information

Application	WB, IHC, IF, ICC, IP
Primary Accession	Q9UMD9
Host	Rabbit
Isotype	Rabbit IgG
Reactivity	Rat, Human, Mouse
Clonality	Monoclonal
Format	Liquid

Description

Anti-Collagen XVII Rabbit Monoclonal Antibody . Tested in WB, IHC, ICC/IF, IP applications. This antibody reacts with Human, Mouse, Rat.

Anti-Collagen XVII Rabbit Monoclonal Antibody - Additional Information

Gene ID 1308

Other Names

Collagen alpha-1(XVII) chain, 180 kDa bullous pemphigoid antigen 2, Bullous pemphigoid antigen 2, 120 kDa linear IgA disease antigen, 120 kDa linear IgA dermatosis antigen, Linear IgA disease antigen 1, LAD-1, 97 kDa linear IgA disease antigen, 97 kDa linear IgA bullous dermatosis antigen, 97 kDa LAD antigen, 97-LAD, Linear IgA bullous disease antigen of 97 kDa, LABD97, COL17A1, BP180, BPAG2

Calculated MW

150419 MW KDa

Application Details

WB 1:500-1:2000
IHC 1:50-1:200
ICC/IF 1:50-1:200
IP 1:30

Subcellular Localization

Cell junction, hemidesmosome. Membrane; Single-pass type II membrane protein. Localized along the plasma membrane of the hemidesmosome.

Tissue Specificity

Detected in skin (PubMed:8618013). In the cornea, it is detected in the epithelial basement membrane, the epithelial cells, and at a lower level in stromal cells (at protein level) (PubMed:25676728). Stratified squamous epithelia. Found in hemidesmosomes. Expressed in cornea, oral mucosa, esophagus, intestine, kidney collecting ducts, ureter, bladder, urethra and thymus but is absent in lung, blood vessels, skeletal muscle and nerves..

Contents

Rabbit IgG in phosphate buffered saline, pH 7.4, 150mM NaCl, 0.02% sodium azide and 50% glycerol, 0.4-0.5mg/ml BSA.

Immunogen

A synthesized peptide derived from human Collagen XVII

Purification

Affinity-chromatography

Storage

Store at -20°C for one year. For short term storage and frequent use, store at 4°C for up to one month. Avoid repeated freeze-thaw cycles.

Anti-Collagen XVII Rabbit Monoclonal Antibody - Protein Information

Name COL17A1

Synonyms BP180, BPAG2

Function

May play a role in the integrity of hemidesmosome and the attachment of basal keratinocytes to the underlying basement membrane.

Cellular Location

Cell junction, hemidesmosome. Membrane; Single-pass type II membrane protein. Note=Localized along the plasma membrane of the hemidesmosome [97 kDa linear IgA disease antigen]: Secreted, extracellular space, extracellular matrix, basement membrane Note=Localized in the lamina lucida beneath the hemidesmosomes

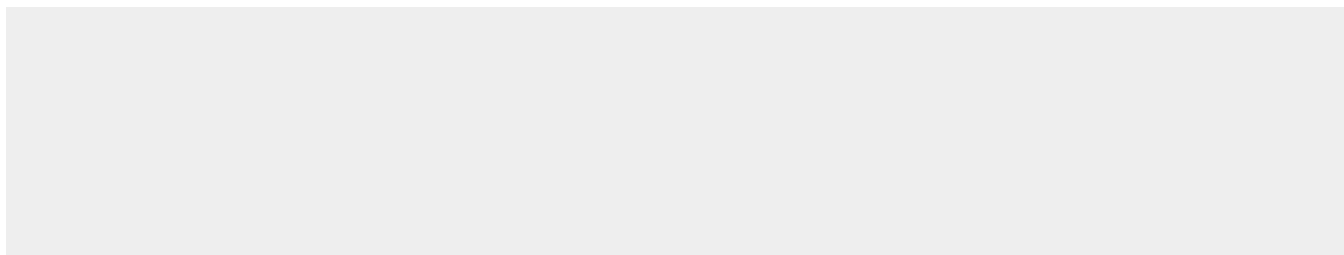
Tissue Location

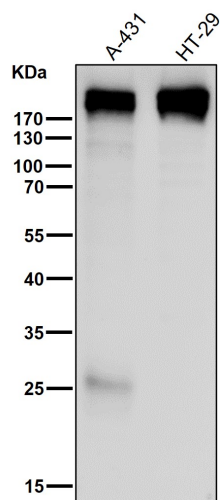
Detected in skin (PubMed:8618013). In the cornea, it is detected in the epithelial basement membrane, the epithelial cells, and at a lower level in stromal cells (at protein level) (PubMed:25676728). Stratified squamous epithelia. Found in hemidesmosomes. Expressed in cornea, oral mucosa, esophagus, intestine, kidney collecting ducts, ureter, bladder, urethra and thymus but is absent in lung, blood vessels, skeletal muscle and nerves

Anti-Collagen XVII Rabbit Monoclonal Antibody - Protocols

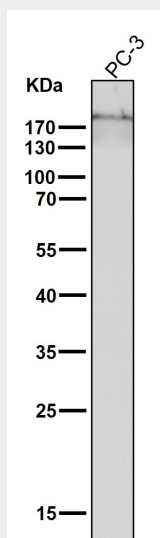
Provided below are standard protocols that you may find useful for product applications.

- [Western Blot](#)
- [Blocking Peptides](#)
- [Dot Blot](#)
- [Immunohistochemistry](#)
- [Immunofluorescence](#)
- [Immunoprecipitation](#)
- [Flow Cytometry](#)
- [Cell Culture](#)

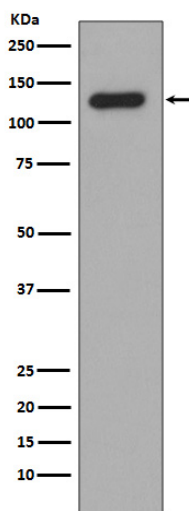
Anti-Collagen XVII Rabbit Monoclonal Antibody - Images



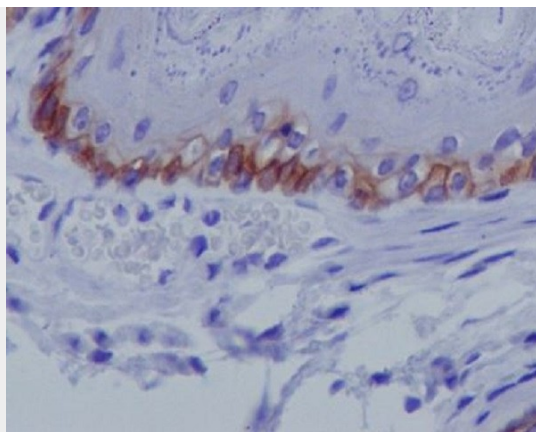
All lanes use the Antibody at 1:2K dilution for 1 hour at room temperature.



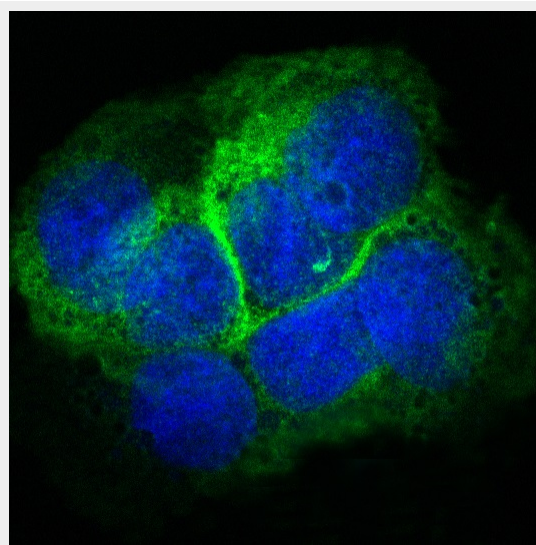
All lanes use the Antibody at 1:2K dilution for 1 hour at room temperature.



Western blot analysis of Collagen XVII expression in Human skin lysate.



Immunohistochemical analysis of paraffin-embedded mouse skin, using Collagen XVII Antibody.



Immunofluorescent analysis of A431 cells, using Collagen XVII Antibody.