

Anti-Histone H2A.Z H2afz Rabbit Monoclonal Antibody
Catalog # ABO14148**Specification****Anti-Histone H2A.Z H2afz Rabbit Monoclonal Antibody - Product Information**

Application	WB, IHC, IF, ICC
Primary Accession	P0C0S5
Host	Rabbit
Isotype	Rabbit IgG
Reactivity	Rat, Human, Mouse
Clonality	Monoclonal
Format	Liquid

Description

Anti-Histone H2A.Z H2afz Rabbit Monoclonal Antibody . Tested in WB, IHC, ICC/IF applications. This antibody reacts with Human, Mouse, Rat.

Anti-Histone H2A.Z H2afz Rabbit Monoclonal Antibody - Additional Information

Gene ID 3015

Other Names

Histone H2A.Z, H2A/z, H2AZ1 (http://www.genenames.org/cgi-bin/gene_symbol_report?hgnc_id=4741)
HGNC:4741

Calculated MW

14135 MW KDa

Application Details

WB 1:500-1:2000
IHC 1:50-1:200
ICC/IF 1:50-1:200

Subcellular Localization

Nucleus. Chromosome.

Contents

Rabbit IgG in phosphate buffered saline, pH 7.4, 150mM NaCl, 0.02% sodium azide and 50% glycerol, 0.4-0.5mg/ml BSA.

Immunogen

A synthesized peptide derived from human Histone H2A.Z

Purification

Affinity-chromatography

Storage

Store at -20°C for one year. For short term storage and frequent use, store at 4°C for up to one month. Avoid repeated freeze-thaw cycles.

Anti-Histone H2A.Z H2afz Rabbit Monoclonal Antibody - Protein Information

Name H2AZ1 ([HGNC:4741](#))

Function

Variant histone H2A which replaces conventional H2A in a subset of nucleosomes. Nucleosomes wrap and compact DNA into chromatin, limiting DNA accessibility to the cellular machineries which require DNA as a template. Histones thereby play a central role in transcription regulation, DNA repair, DNA replication and chromosomal stability. DNA accessibility is regulated via a complex set of post- translational modifications of histones, also called histone code, and nucleosome remodeling. May be involved in the formation of constitutive heterochromatin. May be required for chromosome segregation during cell division.

Cellular Location

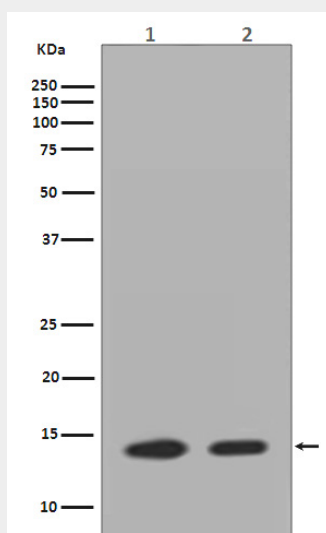
Nucleus. Chromosome.

Anti-Histone H2A.Z H2afz Rabbit Monoclonal Antibody - Protocols

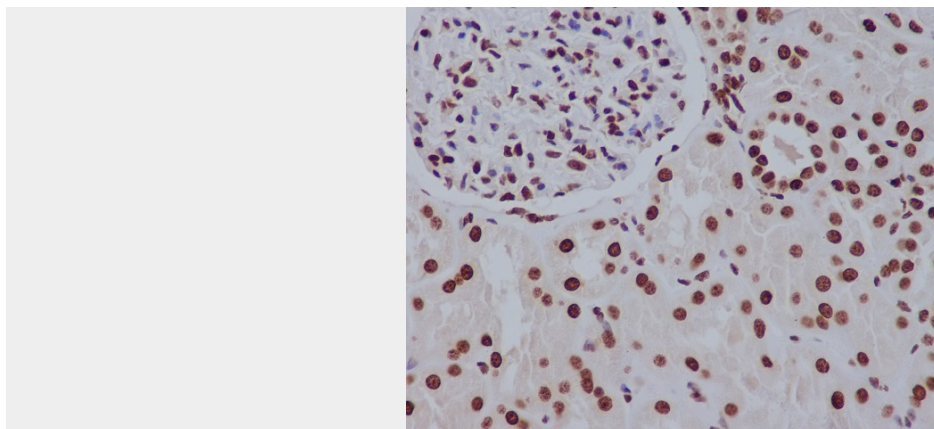
Provided below are standard protocols that you may find useful for product applications.

- [Western Blot](#)
- [Blocking Peptides](#)
- [Dot Blot](#)
- [Immunohistochemistry](#)
- [Immunofluorescence](#)
- [Immunoprecipitation](#)
- [Flow Cytometry](#)
- [Cell Culture](#)

Anti-Histone H2A.Z H2afz Rabbit Monoclonal Antibody - Images



Western blot analysis of Histone H2A.Z expression in (1)Neuro-2a cell lysate;(2)HeLa cell lysate.



Immunohistochemical analysis of paraffin-embedded human kidney, using Histone H2A.Z Antibody.