

Anti-Cytokeratin 6 Rabbit Monoclonal Antibody
Catalog # ABO14152**Specification**

Anti-Cytokeratin 6 Rabbit Monoclonal Antibody - Product Information

Application	WB, IHC, IF, ICC
Primary Accession	P02538
Host	Rabbit
Isotype	Rabbit IgG
Reactivity	Human
Clonality	Monoclonal
Format	Liquid

Description

Anti-Cytokeratin 6 Rabbit Monoclonal Antibody . Tested in WB, IHC, ICC/IF applications. This antibody reacts with Human.

Anti-Cytokeratin 6 Rabbit Monoclonal Antibody - Additional Information

Gene ID 3853

Other Names

Keratin, type II cytoskeletal 6A, Cytokeratin-6A, CK-6A, Cytokeratin-6D, CK-6D, Keratin-6A, K6A, Type-II keratin Kb6, Hom s 5, KRT6A, K6A, KRT6D

Calculated MW

60045 MW KDa

Application Details

WB 1:500-1:2000
IHC 1:50-1:200
ICC/IF 1:50-1:200

Tissue Specificity

Constitutively expressed in distinct types of epithelia such as those in oral mucosa, esophagus, papillae of tongue and hair follicle outer root sheath.

Contents

Rabbit IgG in phosphate buffered saline, pH 7.4, 150mM NaCl, 0.02% sodium azide and 50% glycerol, 0.4-0.5mg/ml BSA.

Immunogen

A synthesized peptide derived from human Cytokeratin 6

Purification

Affinity-chromatography

Storage

Store at -20°C for one year. For short term storage and frequent use, store at 4°C for up to one month. Avoid repeated freeze-thaw cycles.

Anti-Cytokeratin 6 Rabbit Monoclonal Antibody - Protein Information

Name KRT6A

Synonyms K6A, KRT6D

Function

Epidermis-specific type I keratin involved in wound healing. Involved in the activation of follicular keratinocytes after wounding, while it does not play a major role in keratinocyte proliferation or migration. Participates in the regulation of epithelial migration by inhibiting the activity of SRC during wound repair.

Tissue Location

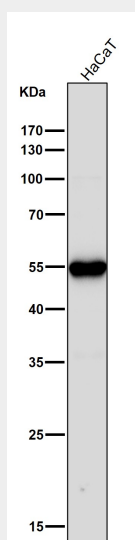
Expressed in the corneal epithelium (at protein level).

Anti-Cytokeratin 6 Rabbit Monoclonal Antibody - Protocols

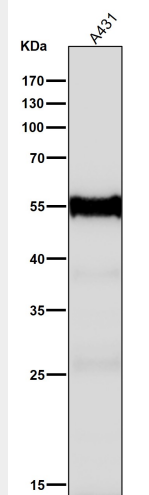
Provided below are standard protocols that you may find useful for product applications.

- [Western Blot](#)
- [Blocking Peptides](#)
- [Dot Blot](#)
- [Immunohistochemistry](#)
- [Immunofluorescence](#)
- [Immunoprecipitation](#)
- [Flow Cytometry](#)
- [Cell Culture](#)

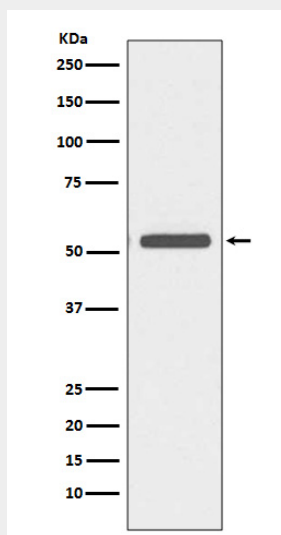
Anti-Cytokeratin 6 Rabbit Monoclonal Antibody - Images



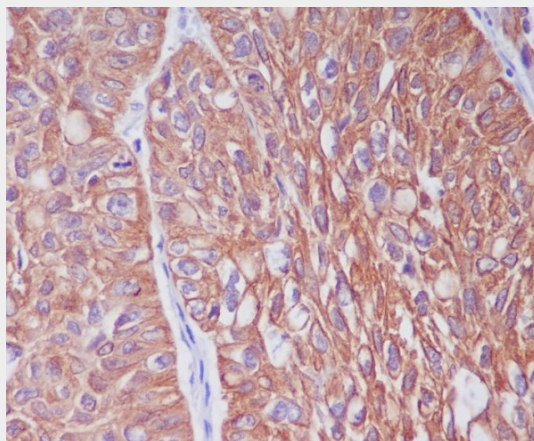
All lanes use the Antibody at 1:1W dilution for 1 hour at room temperature.



All lanes use the Antibody at 1:1W dilution for 1 hour at room temperature.



Western blot analysis of Cytokeratin 6 expression in A431 cell lysate.



Immunohistochemical analysis of paraffin-embedded human lung cancer, using Cytokeratin 6 Antibody.