

Anti-Cytokeratin 1 Rabbit Monoclonal Antibody
Catalog # ABO14156**Specification**

Anti-Cytokeratin 1 Rabbit Monoclonal Antibody - Product Information

Application	WB, IHC
Primary Accession	P04264
Host	Rabbit
Isotype	Rabbit IgG
Reactivity	Rat, Human, Mouse
Clonality	Monoclonal
Format	Liquid

Description

Anti-Cytokeratin 1 Rabbit Monoclonal Antibody . Tested in WB, IHC applications. This antibody reacts with Human, Mouse, Rat.

Anti-Cytokeratin 1 Rabbit Monoclonal Antibody - Additional Information

Gene ID 3848

Other Names

Keratin, type II cytoskeletal 1, 67 kDa cytokeratin, Cytokeratin-1, CK-1, Hair alpha protein, Keratin-1, K1, Type-II keratin Kb1, KRT1, KRTA

Calculated MW

66039 MW KDa

Application Details

WB 1:5000-1:20000
IHC 1:50-1:200

Subcellular Localization

Cell membrane. Located on plasma membrane of neuroblastoma NMB7 cells.

Tissue Specificity

The source of this protein is neonatal foreskin. The 67-kDa type II keratins are expressed in terminally differentiating epidermis.

Contents

Rabbit IgG in phosphate buffered saline, pH 7.4, 150mM NaCl, 0.02% sodium azide and 50% glycerol, 0.4-0.5mg/ml BSA.

Immunogen

A synthesized peptide derived from human Cytokeratin 1

Purification

Affinity-chromatography

Storage

Store at -20°C for one year. For short term storage and frequent use, store at 4°C for

up to one month. Avoid repeated
freeze-thaw cycles.

Anti-Cytokeratin 1 Rabbit Monoclonal Antibody - Protein Information

Name KRT1

Synonyms KRTA

Function

May regulate the activity of kinases such as PKC and SRC via binding to integrin beta-1 (ITB1) and the receptor of activated protein C kinase 1 (RACK1). In complex with C1QBP is a high affinity receptor for kininogen-1/HMWK.

Cellular Location

Cell membrane. Cytoplasm

Tissue Location

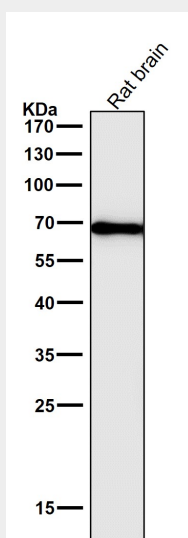
The source of this protein is neonatal foreskin. The 67-kDa type II keratins are expressed in terminally differentiating epidermis

Anti-Cytokeratin 1 Rabbit Monoclonal Antibody - Protocols

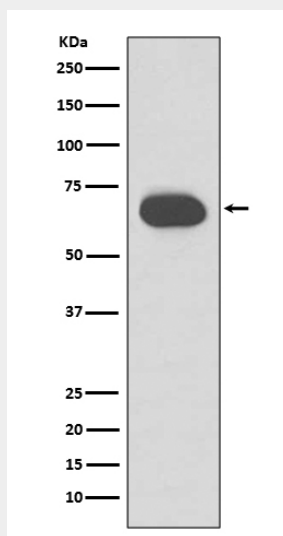
Provided below are standard protocols that you may find useful for product applications.

- [Western Blot](#)
- [Blocking Peptides](#)
- [Dot Blot](#)
- [Immunohistochemistry](#)
- [Immunofluorescence](#)
- [Immunoprecipitation](#)
- [Flow Cytometry](#)
- [Cell Culture](#)

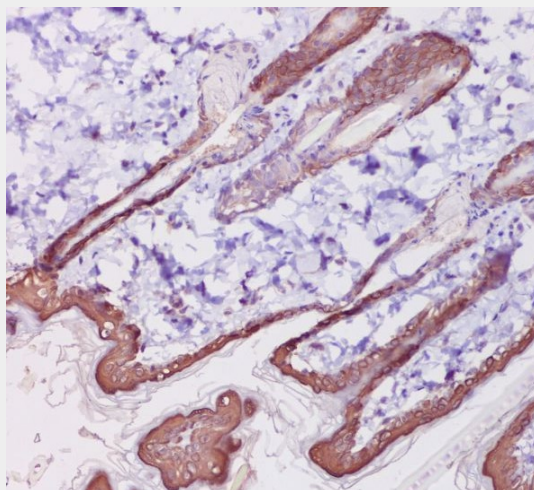
Anti-Cytokeratin 1 Rabbit Monoclonal Antibody - Images



All lanes use the Antibody at 1:2W dilution for 1 hour at room temperature.



Western blot analysis of Cytokeratin 1 expression in Human skin lysate.



Immunohistochemical analysis of paraffin-embedded rat skin, using Cytokeratin 1 Antibody.