

Anti-Tissue Factor Rabbit Monoclonal Antibody
Catalog # ABO14161**Specification**

Anti-Tissue Factor Rabbit Monoclonal Antibody - Product Information

Application	WB, IHC, IF, ICC
Primary Accession	P13726
Host	Rabbit
Isotype	Rabbit IgG
Reactivity	Rat, Human, Mouse
Clonality	Monoclonal
Format	Liquid

Description

Anti-Tissue Factor Rabbit Monoclonal Antibody . Tested in WB, IHC, ICC/IF applications. This antibody reacts with Human, Mouse, Rat.

Anti-Tissue Factor Rabbit Monoclonal Antibody - Additional Information

Gene ID 2152

Other Names

Tissue factor, TF, Coagulation factor III, Thromboplastin, CD142, F3

Calculated MW

33068 MW KDa

Application Details

WB 1:1000-1:2000
IHC 1:50-1:200
ICC/IF 1:50-1:200

Subcellular Localization

Isoform 1: Membrane; Single-pass type I membrane protein.

Tissue Specificity

Lung, placenta and pancreas..

Contents

Rabbit IgG in phosphate buffered saline, pH 7.4, 150mM NaCl, 0.02% sodium azide and 50% glycerol, 0.4-0.5mg/ml BSA.

Immunogen

A synthesized peptide derived from human Tissue Factor

Purification

Affinity-chromatography

Storage

Store at -20°C for one year. For short term storage and frequent use, store at 4°C for up to one month. Avoid repeated freeze-thaw cycles.

Anti-Tissue Factor Rabbit Monoclonal Antibody - Protein Information

Name F3

Function

Initiates blood coagulation by forming a complex with circulating factor VII or VIIa. The [TF:VIIa] complex activates factors IX or X by specific limited proteolysis. TF plays a role in normal hemostasis by initiating the cell-surface assembly and propagation of the coagulation protease cascade.

Cellular Location

[Isoform 1]: Membrane; Single-pass type I membrane protein

Tissue Location

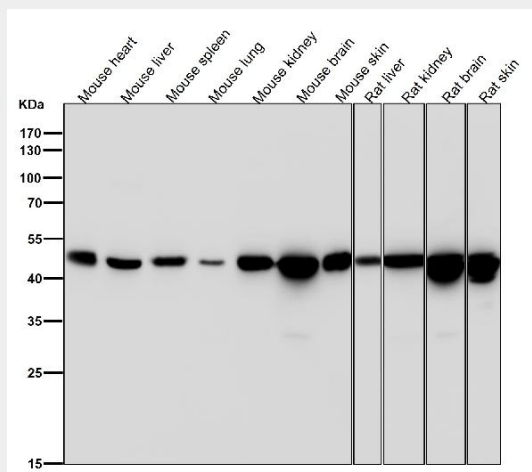
Lung, placenta and pancreas.

Anti-Tissue Factor Rabbit Monoclonal Antibody - Protocols

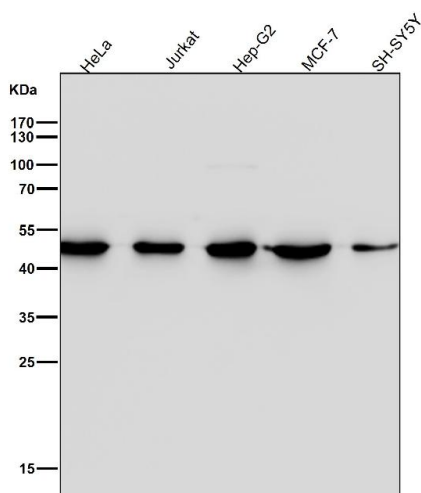
Provided below are standard protocols that you may find useful for product applications.

- [Western Blot](#)
- [Blocking Peptides](#)
- [Dot Blot](#)
- [Immunohistochemistry](#)
- [Immunofluorescence](#)
- [Immunoprecipitation](#)
- [Flow Cytometry](#)
- [Cell Culture](#)

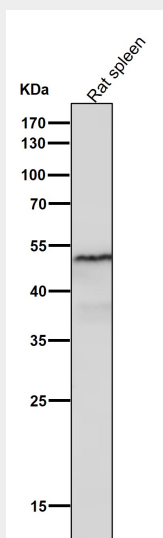
Anti-Tissue Factor Rabbit Monoclonal Antibody - Images



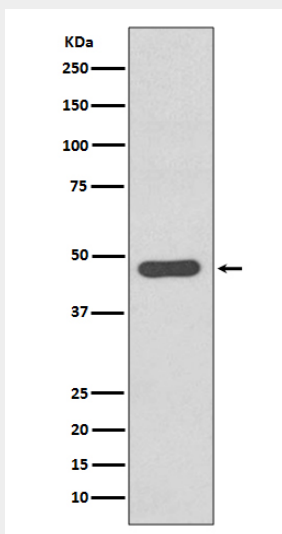
All lanes use the Antibody at 1:5K dilution for 1 hour at room temperature.



All lanes use the Antibody at 1:5K dilution for 1 hour at room temperature.



All lanes use the Antibody at 1:5K dilution for 1 hour at room temperature.



Western blot analysis of Tissue Factor expression in SHSY5Y cell lysate.