

Anti-PD-L1 (CD274) Rabbit Monoclonal Antibody
Catalog # ABO14165**Specification**

Anti-PD-L1 (CD274) Rabbit Monoclonal Antibody - Product Information

Application	WB, IHC
Primary Accession	Q9NZQ7
Host	Rabbit
Isotype	Rabbit IgG
Reactivity	Rat, Human, Mouse
Clonality	Monoclonal
Format	Liquid

Description

Anti-PD-L1 (CD274) Rabbit Monoclonal Antibody . Tested in WB, IHC applications. This antibody reacts with Human, Mouse, Rat.

Anti-PD-L1 (CD274) Rabbit Monoclonal Antibody - Additional Information

Gene ID 29126

Other Names

Programmed cell death 1 ligand 1, PD-L1, PDCD1 ligand 1, Programmed death ligand 1, hPD-L1, B7 homolog 1, B7-H1, CD274, CD274 (http://www.genenames.org/cgi-bin/gene_symbol_report?hgnc_id=17635)
HGNC:17635

Calculated MW

33275 MW KDa

Application Details

WB 1:100-1:500
IHC 1:50-1:100

Subcellular Localization

Isoform 1: Cell membrane; Single-pass type I membrane protein.

Tissue Specificity

Highly expressed in the heart, skeletal muscle, placenta and lung. Weakly expressed in the thymus, spleen, kidney and liver. Expressed on activated T- and B-cells, dendritic cells, keratinocytes and monocytes..

Contents

Rabbit IgG in phosphate buffered saline, pH 7.4, 150mM NaCl, 0.02% sodium azide and 50% glycerol, 0.4-0.5mg/ml BSA.

Immunogen

A synthesized peptide derived from human PD-L1 (CD274)

Purification

Affinity-chromatography

Storage

Store at -20°C for one year. For short term storage and frequent use, store at 4°C for up to one month. Avoid repeated freeze-thaw cycles.

Anti-PD-L1 (CD274) Rabbit Monoclonal Antibody - Protein Information

Name CD274 ([HGNC:17635](#))

Function

Plays a critical role in induction and maintenance of immune tolerance to self (PubMed:11015443, PubMed:28813410, PubMed:28813417, PubMed:31399419). As a ligand for the inhibitory receptor PDCD1/PD-1, modulates the activation threshold of T-cells and limits T-cell effector response (PubMed:11015443, PubMed:28813410, PubMed:28813417, PubMed:36727298). Through a yet unknown activating receptor, may costimulate T-cell subsets that predominantly produce interleukin-10 (IL10) (PubMed:10581077). Can also act as a transcription coactivator: in response to hypoxia, translocates into the nucleus via its interaction with phosphorylated STAT3 and promotes transcription of GSDMC, leading to pyroptosis (PubMed:32929201).

Cellular Location

Cell membrane; Single-pass type I membrane protein. Early endosome membrane; Single-pass type I membrane protein. Recycling endosome membrane; Single-pass type I membrane protein. Nucleus. Note=Associates with CMTM6 at recycling endosomes, where it is protected from being targeted for lysosomal degradation (PubMed:28813417). Translocates to the nucleus in response to hypoxia via its interaction with phosphorylated STAT3 (PubMed:32929201). [Isoform 2]: Endomembrane system; Single-pass type I membrane protein

Tissue Location

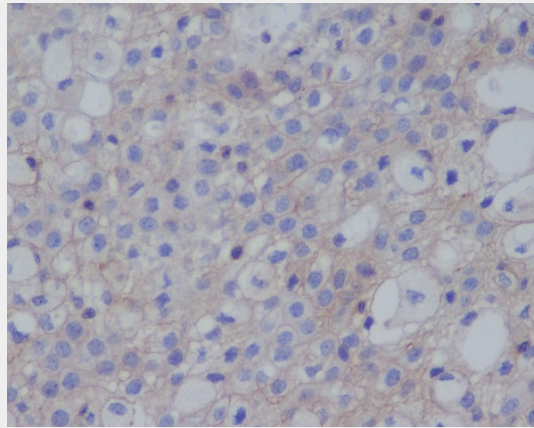
Highly expressed in the heart, skeletal muscle, placenta and lung. Weakly expressed in the thymus, spleen, kidney and liver. Expressed on activated T- and B-cells, dendritic cells, keratinocytes and monocytes.

Anti-PD-L1 (CD274) Rabbit Monoclonal Antibody - Protocols

Provided below are standard protocols that you may find useful for product applications.

- [Western Blot](#)
- [Blocking Peptides](#)
- [Dot Blot](#)
- [Immunohistochemistry](#)
- [Immunofluorescence](#)
- [Immunoprecipitation](#)
- [Flow Cytometry](#)
- [Cell Culture](#)

Anti-PD-L1 (CD274) Rabbit Monoclonal Antibody - Images



Immunohistochemical analysis of paraffin-embedded human thymoma, using PD-L1 (CD274) Antibody.

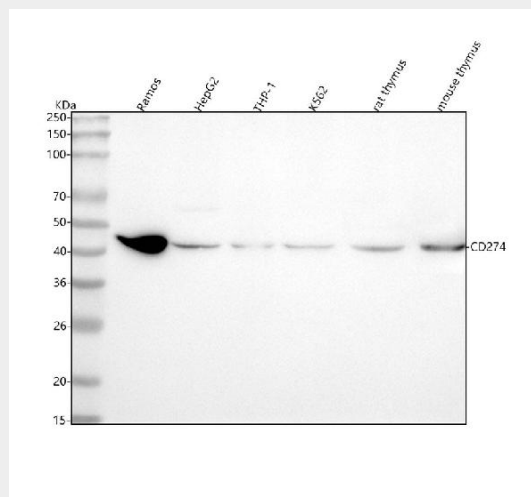


Figure 1. Western blot analysis of PD-L1 using anti-PD-L1 antibody (M00109).

Electrophoresis was performed on a 5-20% SDS-PAGE gel at 70V (Stacking gel) / 90V (Resolving gel) for 2-3 hours. The sample well of each lane was loaded with 30 ug of sample under reducing conditions.

Lane 1: human Ramos whole cell lysates,
Lane 2: human HepG2 whole cell lysates,
Lane 3: human THP-1 whole cell lysates,
Lane 4: human K562 whole cell lysates,
Lane 5: rat thymus tissue lysates,
Lane 6: mouse thymus tissue lysates.

After electrophoresis, proteins were transferred to a nitrocellulose membrane at 150 mA for 50-90 minutes. Blocked the membrane with 5% non-fat milk/TBS for 1.5 hour at RT. The membrane was incubated with rabbit anti-PD-L1 antigen affinity purified monoclonal antibody (Catalog # M00109) at 1:100 overnight at 4°C, then washed with TBS-0.1%Tween 3 times with 5 minutes each and probed with a goat anti-rabbit IgG-HRP secondary antibody at a dilution of 1:5000 for 1.5 hour at RT. The signal is developed using an Enhanced Chemiluminescent detection (ECL) kit (Catalog # EK1002) with Tanon 5200 system. A specific band was detected for PD-L1 at approximately 40 kDa. The expected band size for PD-L1 is at 33 kDa.