

**Anti-Apg12 (Atg12) Rabbit Monoclonal Antibody**  
**Catalog # ABO14170****Specification****Anti-Apg12 (Atg12) Rabbit Monoclonal Antibody - Product Information**

Application	WB, IHC, IF, ICC
Primary Accession	<a href="#">O94817</a>
Host	Rabbit
Isotype	Rabbit IgG
Reactivity	Human
Clonality	Monoclonal
Format	Liquid

**Description**

Anti-Apg12 (Atg12) Rabbit Monoclonal Antibody . Tested in WB, IHC, ICC/IF applications. This antibody reacts with Human.

**Anti-Apg12 (Atg12) Rabbit Monoclonal Antibody - Additional Information**

**Gene ID** 9140

**Other Names**

Ubiquitin-like protein ATG12, Autophagy-related protein 12, APG12-like, ATG12 ([http://www.genenames.org/cgi-bin/gene\\_symbol\\_report?hgnc\\_id=588](http://www.genenames.org/cgi-bin/gene_symbol_report?hgnc_id=588))>HGNC:588</a>), APG12, APG12L

**Calculated MW**

15113 MW KDa

**Application Details**

WB 1:1000-1:5000<br>IHC 1:50-1:200<br>ICC/IF 1:50-1:200

**Subcellular Localization**

Cytoplasm. Preautophagosomal structure membrane ; Peripheral membrane protein. TECPR1 recruits the ATG12-ATG5 conjugate to the autolysosomal membrane.

**Tissue Specificity**

Ubiquitous..

**Contents**

Rabbit IgG in phosphate buffered saline, pH 7.4, 150mM NaCl, 0.02% sodium azide and 50% glycerol, 0.4-0.5mg/ml BSA.

**Immunogen**

A synthesized peptide derived from human Apg12 (Atg12)

**Purification**

Affinity-chromatography

**Storage**

**Store at -20°C for one year. For short term**

**storage and frequent use, store at 4°C for up to one month. Avoid repeated freeze-thaw cycles.**

## **Anti-Apg12 (Atg12) Rabbit Monoclonal Antibody - Protein Information**

**Name** ATG12 ([HGNC:588](#))

**Synonyms** APG12, APG12L

### **Function**

Ubiquitin-like protein involved in autophagy vesicles formation. Conjugation with ATG5 through a ubiquitin-like conjugating system involving also ATG7 as an E1-like activating enzyme and ATG10 as an E2-like conjugating enzyme, is essential for its function. The ATG12-ATG5 conjugate acts as an E3-like enzyme which is required for lipidation of ATG8 family proteins and their association to the vesicle membranes. As part of the ATG8 conjugation system with ATG5 and ATG16L1, required for recruitment of LRRK2 to stressed lysosomes and induction of LRRK2 kinase activity in response to lysosomal stress (By similarity).

### **Cellular Location**

Cytoplasm. Preautophagosomal structure membrane; Peripheral membrane protein. Note=TECPR1 recruits the ATG12- ATG5 conjugate to the autolysosomal membrane

### **Tissue Location**

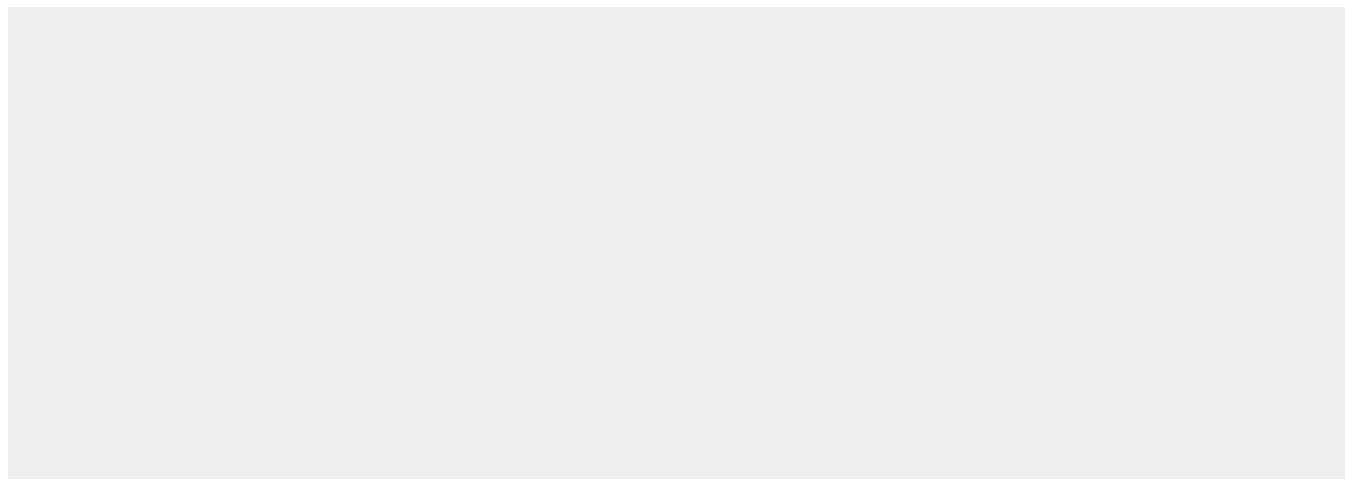
Ubiquitous..

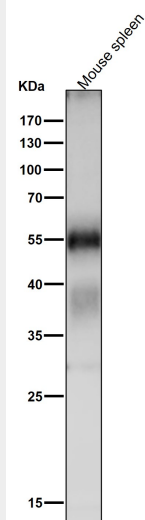
## **Anti-Apg12 (Atg12) Rabbit Monoclonal Antibody - Protocols**

Provided below are standard protocols that you may find useful for product applications.

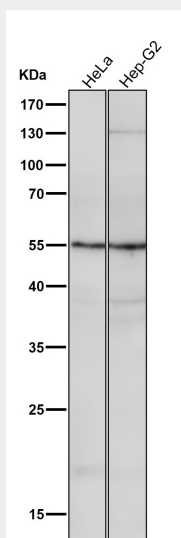
- [Western Blot](#)
- [Blocking Peptides](#)
- [Dot Blot](#)
- [Immunohistochemistry](#)
- [Immunofluorescence](#)
- [Immunoprecipitation](#)
- [Flow Cytometry](#)
- [Cell Culture](#)

## **Anti-Apg12 (Atg12) Rabbit Monoclonal Antibody - Images**

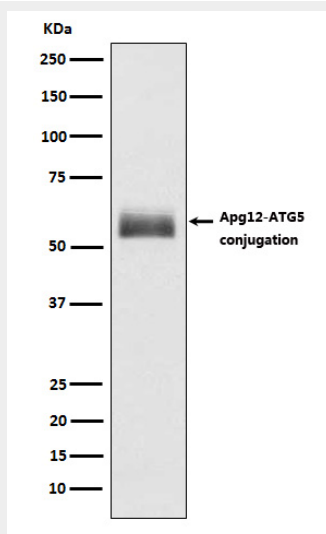




All lanes use the Antibody at 1:1K dilution for 1 hour at room temperature.



All lanes use the Antibody at 1:1K dilution for 1 hour at room temperature.



Western blot analysis of Apg12 expression in HepG2 cell lysate.