

Anti-Liver Arginase ARG1 Rabbit Monoclonal Antibody
Catalog # ABO14175**Specification**

Anti-Liver Arginase ARG1 Rabbit Monoclonal Antibody - Product Information

Application	WB, IHC, IF, ICC, IP
Primary Accession	P05089
Host	Rabbit
Isotype	Rabbit IgG
Reactivity	Human
Clonality	Monoclonal
Format	Liquid

Description

Anti-Liver Arginase ARG1 Rabbit Monoclonal Antibody . Tested in WB, IHC, ICC/IF, IP applications.
This antibody reacts with Human.

Anti-Liver Arginase ARG1 Rabbit Monoclonal Antibody - Additional Information

Gene ID 383

Other Names

Arginase-1, 3.5.3.1, Liver-type arginase, Type I arginase, ARG1

Calculated MW

34735 MW KDa

Application Details

WB 1:500-1:2000
IHC 1:50-1:200
ICC/IF 1:50-1:200
IP 1:30

Subcellular Localization

Cytoplasm.

Contents

Rabbit IgG in phosphate buffered saline, pH 7.4, 150mM NaCl, 0.02% sodium azide and 50% glycerol, 0.4-0.5mg/ml BSA.

Immunogen

A synthesized peptide derived from human Liver Arginase

Purification

Affinity-chromatography

Storage

Store at -20°C for one year. For short term storage and frequent use, store at 4°C for up to one month. Avoid repeated freeze-thaw cycles.

Anti-Liver Arginase ARG1 Rabbit Monoclonal Antibody - Protein Information

Name ARG1**Function**

Key element of the urea cycle converting L-arginine to urea and L-ornithine, which is further metabolized into metabolites proline and polyamides that drive collagen synthesis and bioenergetic pathways critical for cell proliferation, respectively; the urea cycle takes place primarily in the liver and, to a lesser extent, in the kidneys.

Cellular Location

Cytoplasm. Cytoplasmic granule. Note=Localized in azurophil granules of neutrophils (PubMed:15546957)

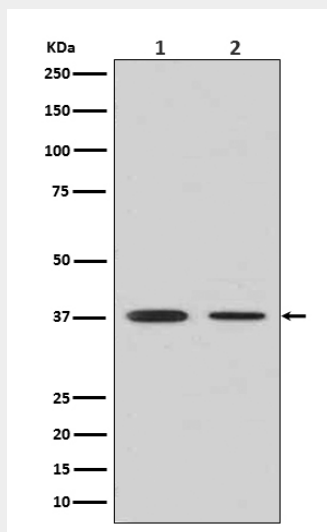
Tissue Location

Within the immune system initially reported to be selectively expressed in granulocytes (polymorphonuclear leukocytes [PMNs]) (PubMed:15546957). Also detected in macrophages mycobacterial granulomas (PubMed:23749634). Expressed in group2 innate lymphoid cells (ILC2s) during lung disease (PubMed:27043409)

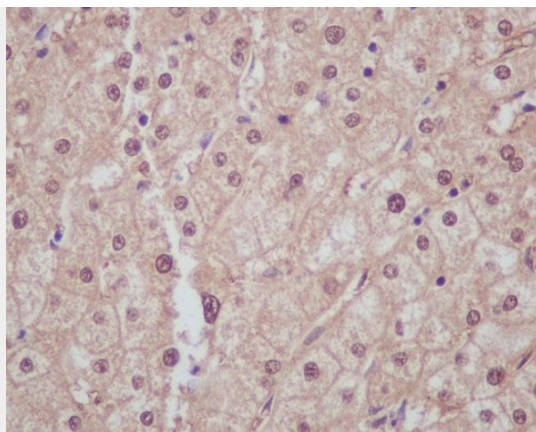
Anti-Liver Arginase ARG1 Rabbit Monoclonal Antibody - Protocols

Provided below are standard protocols that you may find useful for product applications.

- [Western Blot](#)
- [Blocking Peptides](#)
- [Dot Blot](#)
- [Immunohistochemistry](#)
- [Immunofluorescence](#)
- [Immunoprecipitation](#)
- [Flow Cytometry](#)
- [Cell Culture](#)

Anti-Liver Arginase ARG1 Rabbit Monoclonal Antibody - Images

Western blot analysis of Liver Arginase in (1) Human fetal liver lysate; (2) Human fetal lung lysate.



Immunohistochemical analysis of paraffin-embedded human liver, using Liver Arginase Antibody.