

Anti-Laminin beta 1 LAMB1 Rabbit Monoclonal Antibody
Catalog # ABO14196**Specification**

Anti-Laminin beta 1 LAMB1 Rabbit Monoclonal Antibody - Product Information

Application	WB, FC
Primary Accession	P07942
Host	Rabbit
Isotype	Rabbit IgG
Reactivity	Rat, Human, Mouse
Clonality	Monoclonal
Format	Liquid

Description

Anti-Laminin beta 1 LAMB1 Rabbit Monoclonal Antibody . Tested in WB, Flow Cytometry applications. This antibody reacts with Human, Mouse, Rat.

Anti-Laminin beta 1 LAMB1 Rabbit Monoclonal Antibody - Additional Information

Gene ID 3912

Other Names

Laminin subunit beta-1, Laminin B1 chain, Laminin-1 subunit beta, Laminin-10 subunit beta, Laminin-12 subunit beta, Laminin-2 subunit beta, Laminin-6 subunit beta, Laminin-8 subunit beta, LAMB1

Calculated MW

198038 MW KDa

Application Details

WB 1:500-1:2000
FC 1:50

Subcellular Localization

Secreted, extracellular space, extracellular matrix, basement membrane. Major component.

Contents

Rabbit IgG in phosphate buffered saline, pH 7.4, 150mM NaCl, 0.02% sodium azide and 50% glycerol, 0.4-0.5mg/ml BSA.

Immunogen

A synthesized peptide derived from human Laminin beta 1

Purification

Affinity-chromatography

Storage

Store at -20°C for one year. For short term storage and frequent use, store at 4°C for up to one month. Avoid repeated freeze-thaw cycles.

Anti-Laminin beta 1 LAMB1 Rabbit Monoclonal Antibody - Protein Information

Name LAMB1

Function

Binding to cells via a high affinity receptor, laminin is thought to mediate the attachment, migration and organization of cells into tissues during embryonic development by interacting with other extracellular matrix components. Involved in the organization of the laminar architecture of cerebral cortex. It is probably required for the integrity of the basement membrane/glia limitans that serves as an anchor point for the endfeet of radial glial cells and as a physical barrier to migrating neurons. Radial glial cells play a central role in cerebral cortical development, where they act both as the proliferative unit of the cerebral cortex and a scaffold for neurons migrating toward the pial surface.

Cellular Location

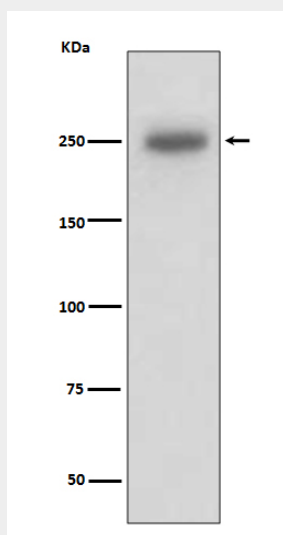
Secreted, extracellular space, extracellular matrix, basement membrane. Note=Major component

Anti-Laminin beta 1 LAMB1 Rabbit Monoclonal Antibody - Protocols

Provided below are standard protocols that you may find useful for product applications.

- [Western Blot](#)
- [Blocking Peptides](#)
- [Dot Blot](#)
- [Immunohistochemistry](#)
- [Immunofluorescence](#)
- [Immunoprecipitation](#)
- [Flow Cytometry](#)
- [Cell Culture](#)

Anti-Laminin beta 1 LAMB1 Rabbit Monoclonal Antibody - Images



Western blot analysis of Laminin beta 1 expression in A431 cell lysate.