

Anti-Serum Amyloid A SAA1 Rabbit Monoclonal Antibody
Catalog # ABO14217**Specification****Anti-Serum Amyloid A SAA1 Rabbit Monoclonal Antibody - Product Information**

Application	WB, IHC
Primary Accession	P0DJ18
Host	Rabbit
Isotype	Rabbit IgG
Reactivity	Human
Clonality	Monoclonal
Format	Liquid

Description

Anti-Serum Amyloid A SAA1 Rabbit Monoclonal Antibody . Tested in WB, IHC applications. This antibody reacts with Human.

Anti-Serum Amyloid A SAA1 Rabbit Monoclonal Antibody - Additional Information

Gene ID 6288

Other Names

Serum amyloid A-1 protein, SAA, Amyloid protein A, Amyloid fibril protein AA, Serum amyloid protein A(2-104), Serum amyloid protein A(3-104), Serum amyloid protein A(2-103), Serum amyloid protein A(2-102), Serum amyloid protein A(4-101), SAA1

Calculated MW

13532 MW KDa

Application Details

WB 1:500-1:2000
IHC 1:50-1:200

Subcellular Localization

Secreted.

Tissue Specificity

Expressed by the liver; secreted in plasma (at protein level)..

Contents

Rabbit IgG in phosphate buffered saline, pH 7.4, 150mM NaCl, 0.02% sodium azide and 50% glycerol, 0.4-0.5mg/ml BSA.

Immunogen

A synthesized peptide derived from human Serum Amyloid A

Purification

Affinity-chromatography

Storage

Store at -20°C for one year. For short term storage and frequent use, store at 4°C for

up to one month. Avoid repeated
freeze-thaw cycles.

Anti-Serum Amyloid A SAA1 Rabbit Monoclonal Antibody - Protein Information

Name SAA1

Function

Major acute phase protein.

Cellular Location

Secreted.

Tissue Location

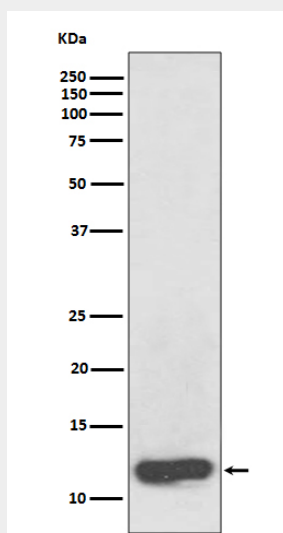
Expressed by the liver; secreted in plasma (at protein level).

Anti-Serum Amyloid A SAA1 Rabbit Monoclonal Antibody - Protocols

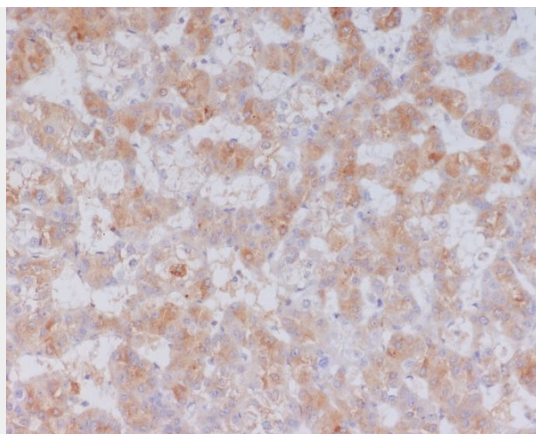
Provided below are standard protocols that you may find useful for product applications.

- [Western Blot](#)
- [Blocking Peptides](#)
- [Dot Blot](#)
- [Immunohistochemistry](#)
- [Immunofluorescence](#)
- [Immunoprecipitation](#)
- [Flow Cytometry](#)
- [Cell Culture](#)

Anti-Serum Amyloid A SAA1 Rabbit Monoclonal Antibody - Images



Western blot analysis of Serum Amyloid A expression in human plasma lysate.



Immunohistochemical analysis of paraffin-embedded human liver cancer, using Serum Amyloid A Antibody.