

**Anti-Integrin alpha E ITGAE Rabbit Monoclonal Antibody**  
**Catalog # ABO14226****Specification**

---

**Anti-Integrin alpha E ITGAE Rabbit Monoclonal Antibody - Product Information**

Application	IHC
Primary Accession	<a href="#">P38570</a>
Host	Rabbit
Isotype	Rabbit IgG
Reactivity	Human
Clonality	Monoclonal
Format	Liquid

**Description**

Anti-Integrin alpha E ITGAE Rabbit Monoclonal Antibody . Tested in IHC application. This antibody reacts with Human.

**Anti-Integrin alpha E ITGAE Rabbit Monoclonal Antibody - Additional Information**

**Gene ID** 3682

**Other Names**

Integrin alpha-E, HML-1 antigen, Integrin alpha-IEL, Mucosal lymphocyte 1 antigen, CD103, Integrin alpha-E light chain, Integrin alpha-E heavy chain, ITGAE

**Calculated MW**

130159 MW KDa

**Application Details**

IHC 1:100-1:500

**Subcellular Localization**

Membrane; Single-pass type I membrane protein.

**Tissue Specificity**

Expressed on a subclass of T-lymphocytes known as intra-epithelial lymphocytes which are located between mucosal epithelial cells.

**Contents**

Rabbit IgG in phosphate buffered saline, pH 7.4, 150mM NaCl, 0.02% sodium azide and 50% glycerol, 0.4-0.5mg/ml BSA.

**Immunogen**

A synthesized peptide derived from human Integrin alpha E

**Purification**

Affinity-chromatography

**Storage**

**Store at -20°C for one year. For short term storage and frequent use, store at 4°C for**

up to one month. Avoid repeated  
freeze-thaw cycles.

## Anti-Integrin alpha E ITGAE Rabbit Monoclonal Antibody - Protein Information

**Name** ITGAE

### Function

Integrin alpha-E/beta-7 is a receptor for E-cadherin. It mediates adhesion of intra-epithelial T-lymphocytes to epithelial cell monolayers.

### Cellular Location

Membrane; Single-pass type I membrane protein.

### Tissue Location

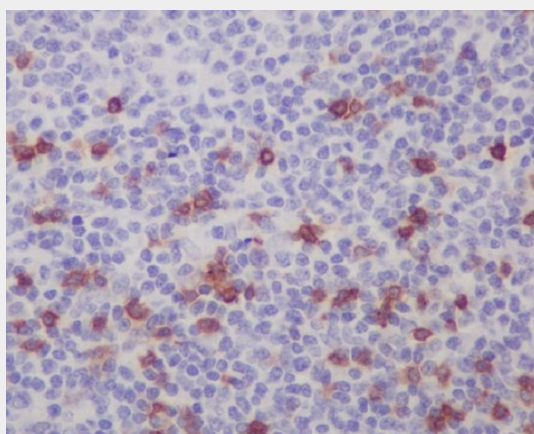
Expressed on a subclass of T-lymphocytes known as intra-epithelial lymphocytes which are located between mucosal epithelial cells

## Anti-Integrin alpha E ITGAE Rabbit Monoclonal Antibody - Protocols

Provided below are standard protocols that you may find useful for product applications.

- [Western Blot](#)
- [Blocking Peptides](#)
- [Dot Blot](#)
- [Immunohistochemistry](#)
- [Immunofluorescence](#)
- [Immunoprecipitation](#)
- [Flow Cytometry](#)
- [Cell Culture](#)

## Anti-Integrin alpha E ITGAE Rabbit Monoclonal Antibody - Images



Immunohistochemical analysis of paraffin-embedded human tonsil, using Integrin alpha E Antibody.