

**Anti-58K Golgi protein Rabbit Monoclonal Antibody**  
**Catalog # ABO14244****Specification****Anti-58K Golgi protein Rabbit Monoclonal Antibody - Product Information**

Application	WB, IHC, FC
Primary Accession	<a href="#">O95954</a>
Host	Rabbit
Isotype	Rabbit IgG
Reactivity	Human
Clonality	Monoclonal
Format	Liquid

**Description**

Anti-58K Golgi protein Rabbit Monoclonal Antibody . Tested in WB, IHC, Flow Cytometry applications. This antibody reacts with Human.

**Anti-58K Golgi protein Rabbit Monoclonal Antibody - Additional Information**

**Gene ID** 10841

**Other Names**

Formimidoyltransferase-cyclodeaminase, Formiminotransferase-cyclodeaminase, FTCD, LCHC1, Glutamate formimidoyltransferase, 2.1.2.5, Glutamate formiminotransferase, Glutamate formyltransferase, Formimidoyltetrahydrofolate cyclodeaminase, Formiminotetrahydrofolate cyclodeaminase, FTCD

**Calculated MW**

58927 MW KDa

**Application Details**

WB 1:500-1:2000<br>IHC 1:50-1:200<br>FC 1:100

**Subcellular Localization**

Cytoplasm, cytoskeleton, microtubule organizing center, centrosome, centriole. Golgi apparatus. More abundantly located around the mother centriole.

**Contents**

Rabbit IgG in phosphate buffered saline, pH 7.4, 150mM NaCl, 0.02% sodium azide and 50% glycerol, 0.4-0.5mg/ml BSA.

**Immunogen**

A synthesized peptide derived from human 58K Golgi protein

**Purification**

Affinity-chromatography

**Storage**

**Store at -20°C for one year. For short term storage and frequent use, store at 4°C for up to one month. Avoid repeated**

freeze-thaw cycles.

## Anti-58K Golgi protein Rabbit Monoclonal Antibody - Protein Information

**Name** FTCD

### Function

Folate-dependent enzyme, that displays both transferase and deaminase activity. Serves to channel one-carbon units from formiminoglutamate to the folate pool.

### Cellular Location

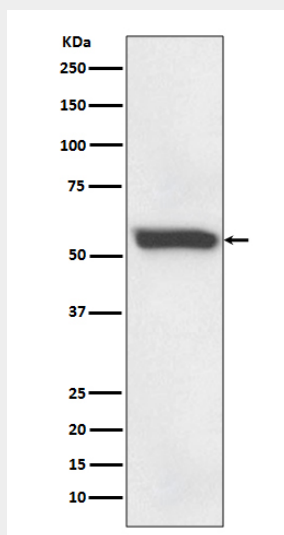
Cytoplasm, cytosol {ECO:0000250|UniProtKB:Q9YH58}. Golgi apparatus {ECO:0000250|UniProtKB:Q9YH58}. Cytoplasm, cytoskeleton, microtubule organizing center, centrosome, centriole Note=More abundantly located around the mother centriole

## Anti-58K Golgi protein Rabbit Monoclonal Antibody - Protocols

Provided below are standard protocols that you may find useful for product applications.

- [Western Blot](#)
- [Blocking Peptides](#)
- [Dot Blot](#)
- [Immunohistochemistry](#)
- [Immunofluorescence](#)
- [Immunoprecipitation](#)
- [Flow Cytometry](#)
- [Cell Culture](#)

## Anti-58K Golgi protein Rabbit Monoclonal Antibody - Images



Western blot analysis of 58K Golgi protein expression in human fetal liver lysate.