

Anti-alpha Sarcoglycan Rabbit Monoclonal Antibody
Catalog # ABO14249**Specification****Anti-alpha Sarcoglycan Rabbit Monoclonal Antibody - Product Information**

Application	WB, IHC, IP
Primary Accession	Q16586
Host	Rabbit
Isotype	Rabbit IgG
Reactivity	Rat, Human, Mouse
Clonality	Monoclonal
Format	Liquid

Description

Anti-alpha Sarcoglycan Rabbit Monoclonal Antibody . Tested in WB, IHC, IP applications. This antibody reacts with Human, Mouse, Rat.

Anti-alpha Sarcoglycan Rabbit Monoclonal Antibody - Additional Information

Gene ID 6442

Other Names

Alpha-sarcoglycan, Alpha-SG, 50 kDa dystrophin-associated glycoprotein, 50DAG, Adhalin, Dystroglycan-2, SGCA, ADL, DAG2

Calculated MW

42875 MW KDa

Application Details

WB 1:500-1:2000
IHC 1:100-1:500
IP 1:40

Subcellular Localization

Cell membrane, sarcolemma ; Single-pass type I membrane protein. Cytoplasm, cytoskeleton.

Tissue Specificity

Most strongly expressed in skeletal muscle. Also expressed in cardiac muscle and, at much lower levels, in lung. In the fetus, most abundant in cardiac muscle and, at lower levels, in lung. Also detected in liver and kidney. Not expressed in brain.

Contents

Rabbit IgG in phosphate buffered saline, pH 7.4, 150mM NaCl, 0.02% sodium azide and 50% glycerol, 0.4-0.5mg/ml BSA.

Immunogen

A synthesized peptide derived from human alpha Sarcoglycan

Purification

Affinity-chromatography

Storage

Store at -20°C for one year. For short term

storage and frequent use, store at 4°C for up to one month. Avoid repeated freeze-thaw cycles.

Anti-alpha Sarcoglycan Rabbit Monoclonal Antibody - Protein Information

Name SGCA

Synonyms ADL, DAG2

Function

Component of the sarcoglycan complex, a subcomplex of the dystrophin-glycoprotein complex which forms a link between the F-actin cytoskeleton and the extracellular matrix.

Cellular Location

Cell membrane, sarcolemma; Single-pass type I membrane protein. Cytoplasm, cytoskeleton

Tissue Location

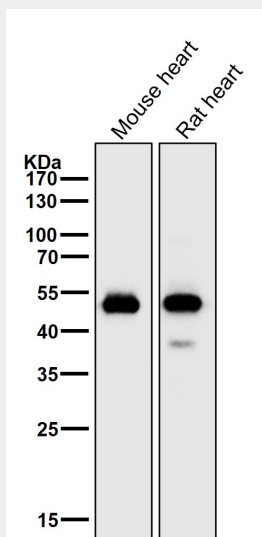
Most strongly expressed in skeletal muscle. Also expressed in cardiac muscle and, at much lower levels, in lung. In the fetus, most abundant in cardiac muscle and, at lower levels, in lung Also detected in liver and kidney. Not expressed in brain

Anti-alpha Sarcoglycan Rabbit Monoclonal Antibody - Protocols

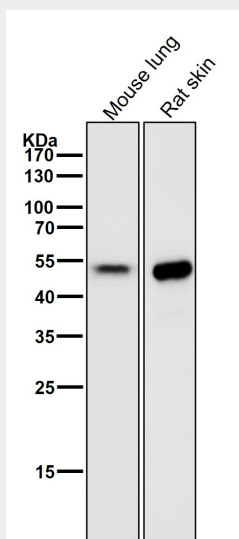
Provided below are standard protocols that you may find useful for product applications.

- [Western Blot](#)
- [Blocking Peptides](#)
- [Dot Blot](#)
- [Immunohistochemistry](#)
- [Immunofluorescence](#)
- [Immunoprecipitation](#)
- [Flow Cytometry](#)
- [Cell Culture](#)

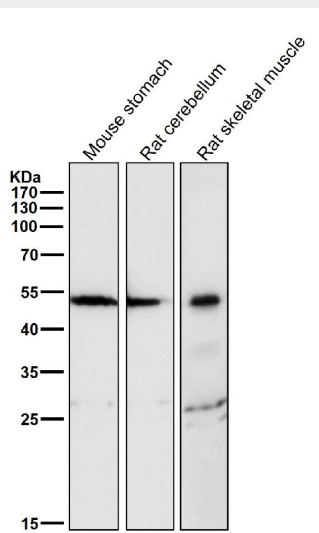
Anti-alpha Sarcoglycan Rabbit Monoclonal Antibody - Images



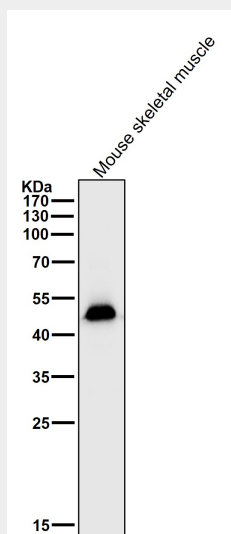
All lanes use the Antibody at 1:2K dilution for 1 hour at room temperature.



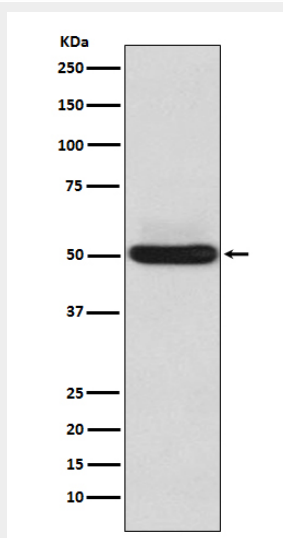
All lanes use the Antibody at 1:2K dilution for 1 hour at room temperature.



All lanes use the Antibody at 1:2K dilution for 1 hour at room temperature.



All lanes use the Antibody at 1:2K dilution for 1 hour at room temperature.



Western blot analysis of alpha Sarcoglycan expression in Human skeletal muscle lysate.