

Anti-Mast Cell Tryptase Rabbit Monoclonal Antibody
Catalog # ABO14257**Specification**

Anti-Mast Cell Tryptase Rabbit Monoclonal Antibody - Product Information

Application	WB, IHC, IP
Primary Accession	Q15661
Host	Rabbit
Isotype	Rabbit IgG
Reactivity	Rat, Human, Mouse
Clonality	Monoclonal
Format	Liquid

Description

Anti-Mast Cell Tryptase Rabbit Monoclonal Antibody . Tested in WB, IHC, IP applications. This antibody reacts with Human, Mouse, Rat.

Anti-Mast Cell Tryptase Rabbit Monoclonal Antibody - Additional Information

Gene ID 7177

Other Names

Tryptase alpha/beta-1, Tryptase-1, 3.4.21.59, Tryptase I, Tryptase alpha-1, TPSAB1, TPS1, TPS2, TPSB1

Calculated MW

30515 MW KDa

Application Details

WB 1:500-1:2000
IHC 1:50-1:200
IP 1:50

Subcellular Localization

Secreted. Released from the secretory granules upon mast cell activation..

Tissue Specificity

Isoform 1 and isoform 2 are expressed in lung, stomach, spleen, heart and skin; in these tissues, isoform 1 is predominant. Isoform 2 is expressed in aorta, spleen, and breast tumor, with highest levels in the endothelial cells of some blood vessels surrounding the aorta, as well as those surrounding the tumor and low levels, if any, in mast cells (at protein level)..

Contents

Rabbit IgG in phosphate buffered saline, pH 7.4, 150mM NaCl, 0.02% sodium azide and 50% glycerol, 0.4-0.5mg/ml BSA.

Immunogen

A synthesized peptide derived from human Mast Cell Tryptase

Purification

Affinity-chromatography

Storage

Store at -20°C for one year. For short term storage and frequent use, store at 4°C for up to one month. Avoid repeated freeze-thaw cycles.

Anti-Mast Cell Tryptase Rabbit Monoclonal Antibody - Protein Information

Name TPSAB1

Synonyms TPS1, TPS2, TPSB1

Function

Tryptase is the major neutral protease present in mast cells and is secreted upon the coupled activation-degranulation response of this cell type. May play a role in innate immunity. Isoform 2 cleaves large substrates, such as fibronectin, more efficiently than isoform 1, but seems less efficient toward small substrates (PubMed:18854315).

Cellular Location

Secreted. Note=Released from the secretory granules upon mast cell activation.

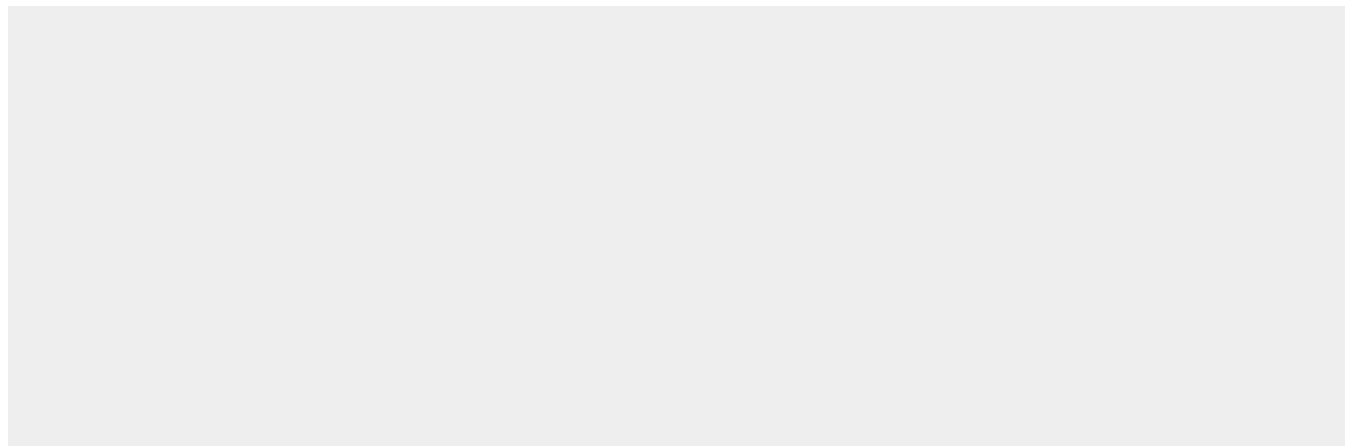
Tissue Location

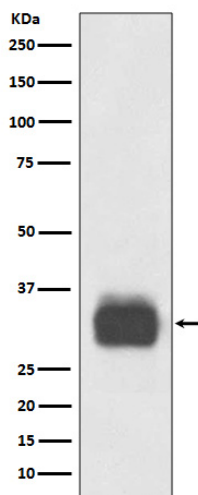
Isoform 1 and isoform 2 are expressed in lung, stomach, spleen, heart and skin; in these tissues, isoform 1 is predominant. Isoform 2 is expressed in aorta, spleen, and breast tumor, with highest levels in the endothelial cells of some blood vessels surrounding the aorta, as well as those surrounding the tumor and low levels, if any, in mast cells (at protein level)

Anti-Mast Cell Tryptase Rabbit Monoclonal Antibody - Protocols

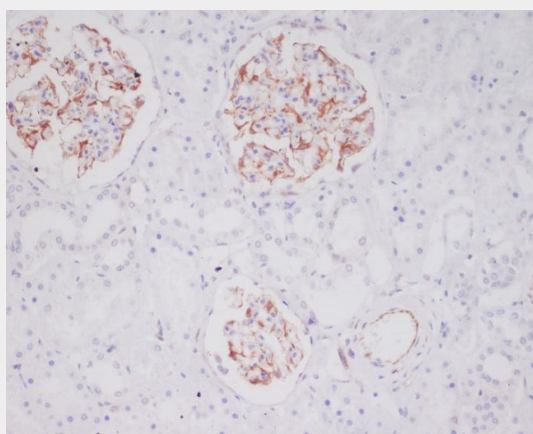
Provided below are standard protocols that you may find useful for product applications.

- [Western Blot](#)
- [Blocking Peptides](#)
- [Dot Blot](#)
- [Immunohistochemistry](#)
- [Immunofluorescence](#)
- [Immunoprecipitation](#)
- [Flow Cytometry](#)
- [Cell Culture](#)

Anti-Mast Cell Tryptase Rabbit Monoclonal Antibody - Images



Western blot analysis of Mast Cell Tryptase expression in Human tonsil lysate.



Immunohistochemical analysis of paraffin-embedded human kidney, using Mast Cell Tryptase Antibody.