

Anti-Actin (Alpha-Actin) ACTA1 Rabbit Monoclonal Antibody
Catalog # ABO14262**Specification**

Anti-Actin (Alpha-Actin) ACTA1 Rabbit Monoclonal Antibody - Product Information

Application	WB, IHC, IF, ICC, IP, FC
Primary Accession	P68133
Host	Rabbit
Isotype	Rabbit IgG
Reactivity	Rat, Human, Mouse
Clonality	Monoclonal
Format	Liquid

Description

Anti-Actin (Alpha-Actin) ACTA1 Rabbit Monoclonal Antibody . Tested in WB, IHC, ICC/IF, IP, Flow Cytometry applications. This antibody reacts with Human, Mouse, Rat.

Anti-Actin (Alpha-Actin) ACTA1 Rabbit Monoclonal Antibody - Additional Information

Gene ID 58

Other Names

Actin, alpha skeletal muscle, 3.6.4.-, Alpha-actin-1, Actin, alpha skeletal muscle, intermediate form, ACTA1, ACTA

Calculated MW

42051 MW KDa

Application Details

WB 1:1000-1:2000
IHC 1:50-1:200
ICC/IF 1:50-1:200
IP 1:50
FC 1:50

Subcellular Localization

Cytoplasm, cytoskeleton.

Contents

Rabbit IgG in phosphate buffered saline, pH 7.4, 150mM NaCl, 0.02% sodium azide and 50% glycerol, 0.4-0.5mg/ml BSA.

Immunogen

A synthesized peptide derived from human Actin (Alpha-Actin)

Purification

Affinity-chromatography

Storage

Store at -20°C for one year. For short term storage and frequent use, store at 4°C for up to one month. Avoid repeated freeze-thaw cycles.

Anti-Actin (Alpha-Actin) ACTA1 Rabbit Monoclonal Antibody - Protein Information

Name ACTA1

Synonyms ACTA

Function

Actins are highly conserved proteins that are involved in various types of cell motility and are ubiquitously expressed in all eukaryotic cells.

Cellular Location

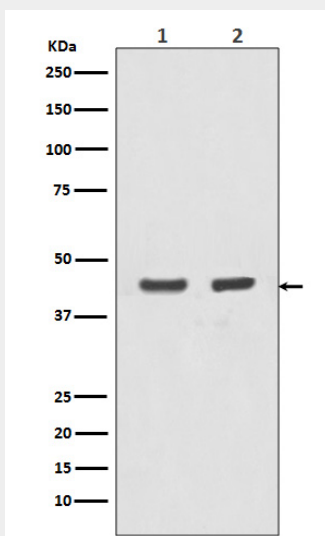
Cytoplasm, cytoskeleton.

Anti-Actin (Alpha-Actin) ACTA1 Rabbit Monoclonal Antibody - Protocols

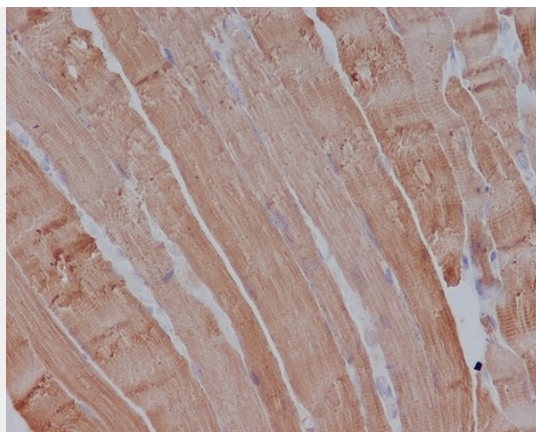
Provided below are standard protocols that you may find useful for product applications.

- [Western Blot](#)
- [Blocking Peptides](#)
- [Dot Blot](#)
- [Immunohistochemistry](#)
- [Immunofluorescence](#)
- [Immunoprecipitation](#)
- [Flow Cytometry](#)
- [Cell Culture](#)

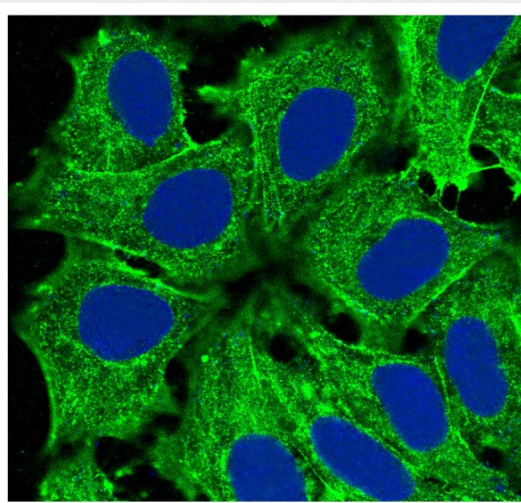
Anti-Actin (Alpha-Actin) ACTA1 Rabbit Monoclonal Antibody - Images



Western blot analysis of Actin (Alpha-Actin) expression in (1) A431 cell lysate; (2) MCF-7 cell lysate.



Immunohistochemical analysis of paraffin-embedded mouse muscle, using Actin (Alpha-Actin) Antibody.



Immunofluorescent analysis of Hela cells, using Actin (Alpha-Actin) Antibody.