

**Anti-Histone H2B (mono methyl R79) HIST2H2BE Rabbit Monoclonal Antibody**  
**Catalog # ABO14323****Specification****Anti-Histone H2B (mono methyl R79) HIST2H2BE Rabbit Monoclonal Antibody - Product Information**

Application	WB
Primary Accession	<a href="#">Q16778</a>
Host	Rabbit
Isotype	Rabbit IgG
Reactivity	Human, Mouse
Clonality	Monoclonal
Format	Liquid

**Description**

Anti-Histone H2B (mono methyl R79) HIST2H2BE Rabbit Monoclonal Antibody . Tested in WB application. This antibody reacts with Human, Mouse.

**Anti-Histone H2B (mono methyl R79) HIST2H2BE Rabbit Monoclonal Antibody - Additional Information**

**Gene ID** 8349

**Other Names**

Histone H2B type 2-E, H2B-clustered histone 21 {ECO:0000312|HGNC:HGNC:4760}, Histone H2B-GL105, Histone H2B.q, H2B/q, H2BC21 ([http://www.genenames.org/cgi-bin/gene\\_symbol\\_report?hgnc\\_id=4760](http://www.genenames.org/cgi-bin/gene_symbol_report?hgnc_id=4760))

**Calculated MW**

13920 MW KDa

**Application Details**

WB 1:1000-1:2000

**Subcellular Localization**

Nucleus. Chromosome.

**Contents**

Rabbit IgG in phosphate buffered saline, pH 7.4, 150mM NaCl, 0.02% sodium azide and 50% glycerol, 0.4-0.5mg/ml BSA.

**Immunogen**

A synthesized peptide derived from human Histone H2B (mono methyl R79)

**Purification**

Affinity-chromatography

**Storage**

**Store at -20°C for one year. For short term storage and frequent use, store at 4°C for**

up to one month. Avoid repeated  
freeze-thaw cycles.

## Anti-Histone H2B (mono methyl R79) HIST2H2BE Rabbit Monoclonal Antibody - Protein Information

**Name** H2BC21 ([HGNC:4760](#))

### Function

Core component of nucleosome. Nucleosomes wrap and compact DNA into chromatin, limiting DNA accessibility to the cellular machineries which require DNA as a template. Histones thereby play a central role in transcription regulation, DNA repair, DNA replication and chromosomal stability. DNA accessibility is regulated via a complex set of post-translational modifications of histones, also called histone code, and nucleosome remodeling.

### Cellular Location

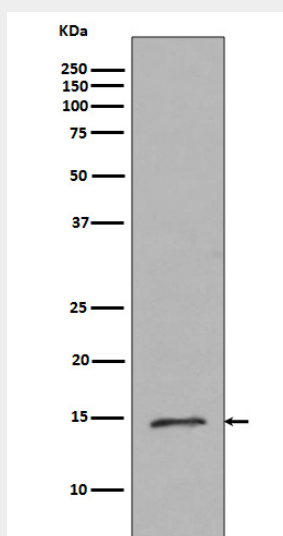
Nucleus. Chromosome.

## Anti-Histone H2B (mono methyl R79) HIST2H2BE Rabbit Monoclonal Antibody - Protocols

Provided below are standard protocols that you may find useful for product applications.

- [Western Blot](#)
- [Blocking Peptides](#)
- [Dot Blot](#)
- [Immunohistochemistry](#)
- [Immunofluorescence](#)
- [Immunoprecipitation](#)
- [Flow Cytometry](#)
- [Cell Culture](#)

## Anti-Histone H2B (mono methyl R79) HIST2H2BE Rabbit Monoclonal Antibody - Images



Western blot analysis of Histone H2B (mono methyl R79) expression in HeLa cell lysate.