

Anti-PON1 Antibody Picoband™ (monoclonal, 11H2)
Catalog # ABO14346**Specification****Anti-PON1 Antibody Picoband™ (monoclonal, 11H2) - Product Information**

Application	E
Primary Accession	P52430
Host	Mouse
Isotype	Mouse IgG2a
Reactivity	Rat, Mouse
Clonality	Monoclonal
Format	Lyophilized

Description

Anti-PON1 Antibody Picoband™ (monoclonal, 11H2) . Tested in ELISA applications. This antibody reacts with Mouse, Rat.

Reconstitution

Add 0.2ml of distilled water will yield a concentration of 500ug/ml.

Anti-PON1 Antibody Picoband™ (monoclonal, 11H2) - Additional Information

Gene ID 18979

Other Names

Serum paraoxonase/arylesterase 1, PON 1, 3.1.1.2, 3.1.1.81, 3.1.8.1, Aromatic esterase 1, A-esterase 1, Serum aryldialkylphosphatase 1, Pon1, Pon

Application Details

ELISA (Cap), 1-5 µg/ml

Subcellular Localization

Secreted, extracellular space.

Tissue Specificity

Plasma, liver, kidney, heart, brain, small intestine and lung. In the plasma, associated with HDL.

Contents

Each vial contains 4mg Trehalose, 0.9mg NaCl, 0.2mg Na₂HPO₄, 0.05mg Na₃.

Immunogen

E. coli-derived mouse PON1 recombinant protein (Position: A30-D274).

Cross Reactivity

No cross-reactivity with other proteins.

Storage

Store at -20°C for one year from date of receipt. After reconstitution, at 4°C for one month. It can also be aliquotted and stored frozen at -20°C for six months. Avoid

repeated freeze-thaw cycles.

Anti-PON1 Antibody Picoband™ (monoclonal, 11H2) - Protein Information

Name Pon1

Synonyms Pon

Function

Hydrolyzes the toxic metabolites of a variety of organophosphorus insecticides. Capable of hydrolyzing a broad spectrum of organophosphate substrates and lactones, and a number of aromatic carboxylic acid esters. Mediates an enzymatic protection of low density lipoproteins against oxidative modification.

Cellular Location

Secreted, extracellular space.

Tissue Location

Plasma, liver, kidney, heart, brain, small intestine and lung. In the plasma, associated with HDL

Anti-PON1 Antibody Picoband™ (monoclonal, 11H2) - Protocols

Provided below are standard protocols that you may find useful for product applications.

- [Western Blot](#)
- [Blocking Peptides](#)
- [Dot Blot](#)
- [Immunohistochemistry](#)
- [Immunofluorescence](#)
- [Immunoprecipitation](#)
- [Flow Cytometry](#)
- [Cell Culture](#)

Anti-PON1 Antibody Picoband™ (monoclonal, 11H2) - Images

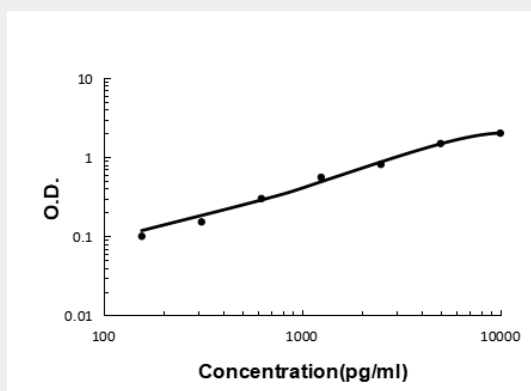


Figure 1. Sandwich ELISA - Recombinant mouse PON1 protein standard curve. Use in combination with reagents from Mouse PON1 ELISA Kit EZ-Set (DIY Antibody Pairs) (EZ1621).