

Anti-Acetyl-CoA Carboxylase Monoclonal Antibody
Catalog # ABO14371**Specification**

Anti-Acetyl-CoA Carboxylase Monoclonal Antibody - Product Information

Application	WB, IHC
Primary Accession	Q13085/O00763
Host	Rabbit
Isotype	Rabbit IgG
Reactivity	Rat, Human, Mouse
Clonality	Monoclonal
Format	Liquid

Description

Anti-Acetyl-CoA Carboxylase Monoclonal Antibody . Tested in WB, IHC applications. This antibody reacts with Human, Mouse, Rat.

Anti-Acetyl-CoA Carboxylase Monoclonal Antibody - Additional Information**Application Details**

WB 1:1000-1:2000
IHC 1:50-1:200

Contents

Rabbit IgG in phosphate buffered saline, pH 7.4, 150mM NaCl, 0.02% sodium azide and 50% glycerol, 0.4-0.5mg/ml BSA.

Immunogen

A synthesized peptide derived from human Acetyl-CoA Carboxylase ACC1 a subunit of acetyl-CoA carboxylase (ACC), a multifunctional enzyme system. Catalyzes the carboxylation of acetyl-CoA to malonyl-CoA, the rate-limiting step in fatty acid synthesis. Acetyl-CoA carboxylase (ACC) catalyzes the pivotal step of the fatty acid synthesis pathway. The 265 kDa ACC Alpha (ACC1) is the predominant isoform found in liver, adipocytes, and mammary gland, while the 280 kDa ACC Beta (ACC2) is the major isoform in skeletal muscle and heart.

Purification

Affinity-chromatography

Storage

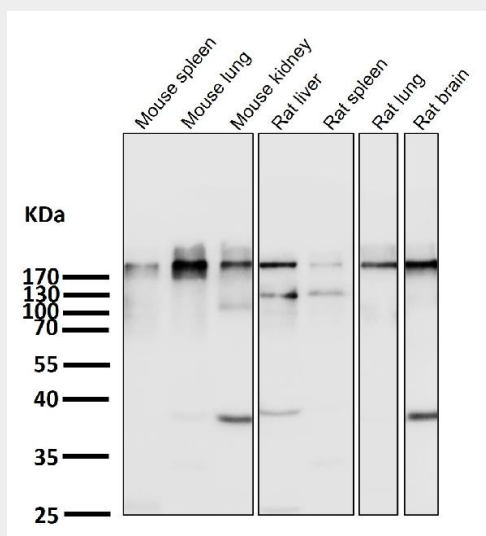
Store at -20°C for one year. For short term storage and frequent use, store at 4°C for up to one month. Avoid repeated freeze-thaw cycles.

Anti-Acetyl-CoA Carboxylase Monoclonal Antibody - Protein Information**Anti-Acetyl-CoA Carboxylase Monoclonal Antibody - Protocols**

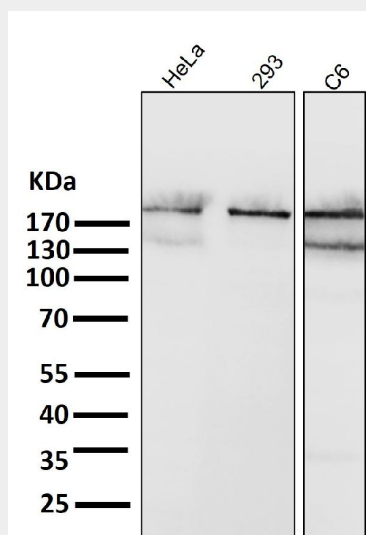
Provided below are standard protocols that you may find useful for product applications.

- [Western Blot](#)
- [Blocking Peptides](#)
- [Dot Blot](#)
- [Immunohistochemistry](#)
- [Immunofluorescence](#)
- [Immunoprecipitation](#)
- [Flow Cytometry](#)
- [Cell Culture](#)

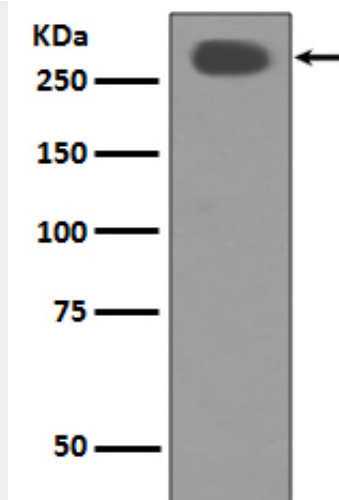
Anti-Acetyl-CoA Carboxylase Monoclonal Antibody - Images



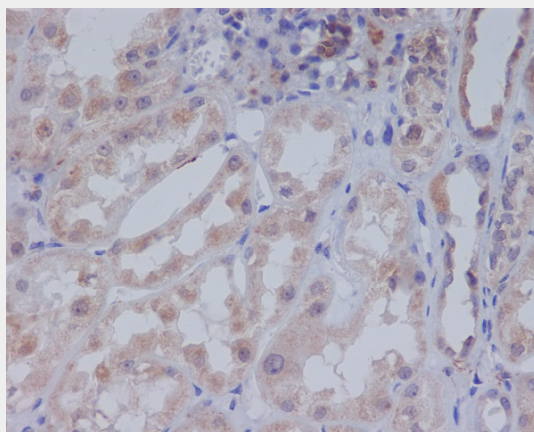
All lanes use the Antibody at 1:1K dilution for 1 hour at room temperature.



All lanes use the Antibody at 1:1K dilution for 1 hour at room temperature.



Western blot analysis of Acetyl-CoA Carboxylase expression in A431 cell lysate.



Immunohistochemical analysis of paraffin-embedded human kidney, using Acetyl-CoA Carboxylase Antibody.