

**Anti-IL10 Monoclonal Antibody**  
**Catalog # ABO14381****Specification**

---

**Anti-IL10 Monoclonal Antibody - Product Information**

Application	WB, IF, ICC, FC
Primary Accession	<a href="#">P22301</a>
Host	Rabbit
Isotype	Rabbit IgG
Reactivity	Human, Mouse
Clonality	Monoclonal
Format	Liquid

**Description**

Anti-IL10 Monoclonal Antibody . Tested in WB, ICC/IF, Flow Cytometry applications. This antibody reacts with Human, Mouse.

**Anti-IL10 Monoclonal Antibody - Additional Information**

**Gene ID** 3586

**Other Names**

Interleukin-10, IL-10, Cytokine synthesis inhibitory factor, CSIF, IL10

**Application Details**

WB 1:500-1:2000<br>ICC/IF 1:50-1:200<br>FC 1:50

**Contents**

Rabbit IgG in phosphate buffered saline, pH 7.4, 150mM NaCl, 0.02% sodium azide and 50% glycerol, 0.4-0.5mg/ml BSA.

**Immunogen**

A synthesized peptide derived from human IL10 Interleukin-10 (IL-10) is an anti-inflammatory cytokine that is produced by T cells, NK cells, and macrophages. IL-10 initiates signal transduction by binding to a cell surface receptor complex consisting of IL-10 RI and IL-10 RII, leading to the activation of Jak1 and Tyk2 and phosphorylation of Stat3.

**Purification**

Affinity-chromatography

Storage

**Store at -20°C for one year. For short term storage and frequent use, store at 4°C for up to one month. Avoid repeated freeze-thaw cycles.**

**Anti-IL10 Monoclonal Antibody - Protein Information**

**Name** IL10

**Function**

Major immune regulatory cytokine that acts on many cells of the immune system where it has profound anti-inflammatory functions, limiting excessive tissue disruption caused by inflammation. Mechanistically, IL10 binds to its heterotetrameric receptor comprising IL10RA and IL10RB leading to JAK1 and STAT2-mediated phosphorylation of STAT3 (PubMed:<a href="http://www.uniprot.org/citations/16982608" target="\_blank">16982608</a>). In turn, STAT3 translocates to the nucleus where it drives expression of anti-inflammatory mediators (PubMed:<a href="http://www.uniprot.org/citations/18025162" target="\_blank">18025162</a>). Targets antigen-presenting cells (APCs) such as macrophages and monocytes and inhibits their release of pro-inflammatory cytokines including granulocyte-macrophage colony-stimulating factor /GM-CSF, granulocyte colony-stimulating factor/G-CSF, IL-1 alpha, IL-1 beta, IL-6, IL-8 and TNF-alpha (PubMed:<a href="http://www.uniprot.org/citations/11564774" target="\_blank">11564774</a>, PubMed:<a href="http://www.uniprot.org/citations/1940799" target="\_blank">1940799</a>, PubMed:<a href="http://www.uniprot.org/citations/7512027" target="\_blank">7512027</a>). Also interferes with antigen presentation by reducing the expression of MHC-class II and co-stimulatory molecules, thereby inhibiting their ability to induce T cell activation (PubMed:<a href="http://www.uniprot.org/citations/8144879" target="\_blank">8144879</a>). In addition, controls the inflammatory response of macrophages by reprogramming essential metabolic pathways including mTOR signaling (By similarity).

**Cellular Location**

Secreted.

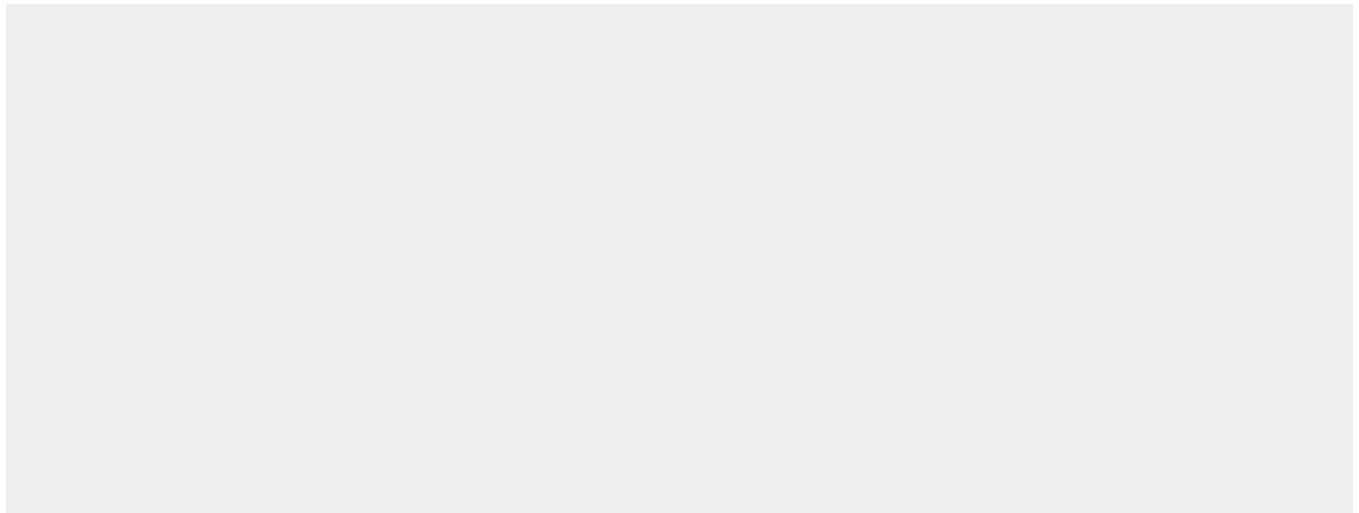
**Tissue Location**

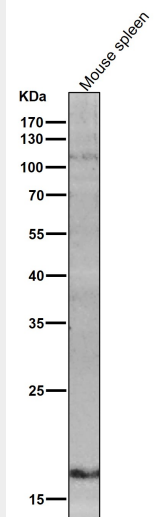
Produced by a variety of cell lines, including T- cells, macrophages, mast cells and other cell types

**Anti-IL10 Monoclonal Antibody - Protocols**

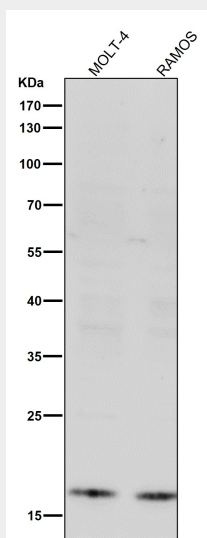
Provided below are standard protocols that you may find useful for product applications.

- [Western Blot](#)
- [Blocking Peptides](#)
- [Dot Blot](#)
- [Immunohistochemistry](#)
- [Immunofluorescence](#)
- [Immunoprecipitation](#)
- [Flow Cytometry](#)
- [Cell Culture](#)

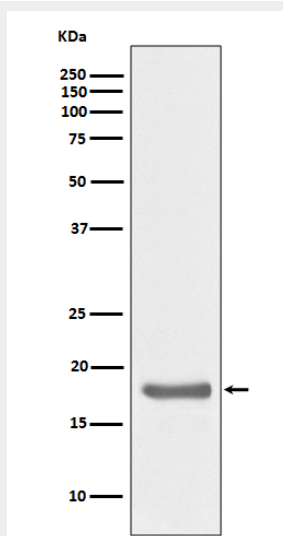
**Anti-IL10 Monoclonal Antibody - Images**



All lanes use the Antibody at 1:1K dilution for 1 hour at room temperature.



All lanes use the Antibody at 1:1K dilution for 1 hour at room temperature.



Western blot analysis of IL10 expression in Ramos cell lysate.