

Anti-Staufen STAU1 Monoclonal Antibody
Catalog # ABO14401**Specification**

Anti-Staufen STAU1 Monoclonal Antibody - Product Information

Application	WB, IF, ICC, FC
Primary Accession	O95793
Host	Rabbit
Isotype	Rabbit IgG
Reactivity	Rat, Human, Mouse
Clonality	Monoclonal
Format	Liquid

Description

Anti-Staufen STAU1 Monoclonal Antibody . Tested in WB, ICC/IF, Flow Cytometry applications. This antibody reacts with Human, Mouse, Rat.

Anti-Staufen STAU1 Monoclonal Antibody - Additional Information

Gene ID 6780

Other Names

Double-stranded RNA-binding protein Staufen homolog 1, STAU1, STAU

Application Details

WB 1:500-1:2000
ICC/IF 1:50-1:200
FC 1:500

Contents

Rabbit IgG in phosphate buffered saline, pH 7.4, 150mM NaCl, 0.02% sodium azide and 50% glycerol, 0.4-0.5mg/ml BSA.

Immunogen

A synthesized peptide derived from human Staufen Binds double-stranded RNA (regardless of the sequence) and tubulin. May play a role in specific positioning of mRNAs at given sites in the cell by cross-linking cytoskeletal and RNA components, and in stimulating their translation at the site.

Purification

Affinity-chromatography

Storage

Store at -20°C for one year. For short term storage and frequent use, store at 4°C for up to one month. Avoid repeated freeze-thaw cycles.

Anti-Staufen STAU1 Monoclonal Antibody - Protein Information

Name STAU1

Synonyms STAU

Function

Binds double-stranded RNA (regardless of the sequence) and tubulin. May play a role in specific positioning of mRNAs at given sites in the cell by cross-linking cytoskeletal and RNA components, and in stimulating their translation at the site.

Cellular Location

Cytoplasm. Rough endoplasmic reticulum. Note=Localizes exclusively with the rough endoplasmic reticulum (RER)

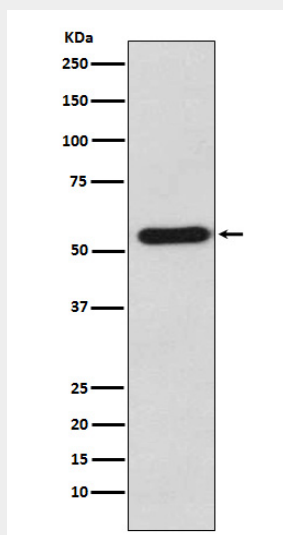
Tissue Location

Widely expressed. Expressed in brain, pancreas, heart, skeletal muscles, liver, lung, kidney and placenta

Anti-Staufen STAU1 Monoclonal Antibody - Protocols

Provided below are standard protocols that you may find useful for product applications.

- [Western Blot](#)
- [Blocking Peptides](#)
- [Dot Blot](#)
- [Immunohistochemistry](#)
- [Immunofluorescence](#)
- [Immunoprecipitation](#)
- [Flow Cytometry](#)
- [Cell Culture](#)

Anti-Staufen STAU1 Monoclonal Antibody - Images

Western blot analysis of Staufen expression in K562 cell lysate.