

**Anti-PON1 Monoclonal Antibody**  
Catalog # ABO14405**Specification****Anti-PON1 Monoclonal Antibody - Product Information**

Application	WB, IP
Primary Accession	<a href="#">P27169</a>
Host	Rabbit
Isotype	Rabbit IgG
Reactivity	Rat, Human, Mouse
Clonality	Monoclonal
Format	Liquid

**Description**

Anti-PON1 Monoclonal Antibody . Tested in WB, IP applications. This antibody reacts with Human, Mouse, Rat.

**Anti-PON1 Monoclonal Antibody - Additional Information**

Gene ID 5444

**Other Names**

Serum paraoxonase/arylesterase 1, PON 1, 3.1.1.2, 3.1.1.81, 3.1.8.1, Aromatic esterase 1, A-esterase 1, K-45, Serum aryldialkylphosphatase 1, PON1, PON

**Application Details**

WB 1:1000-1:5000<br>IP 1:50

**Contents**

Rabbit IgG in phosphate buffered saline, pH 7.4, 150mM NaCl, 0.02% sodium azide and 50% glycerol, 0.4-0.5mg/ml BSA.

**Immunogen**

A synthesized peptide derived from human PON1 Hydrolyzes the toxic metabolites of a variety of organophosphorus insecticides. Capable of hydrolyzing a broad spectrum of organophosphate substrates and lactones, and a number of aromatic carboxylic acid esters. Mediates an enzymatic protection of low density lipoproteins against oxidative modification and the consequent series of events leading to atheroma formation.

**Purification**

Affinity-chromatography

**Storage**

Store at -20°C for one year. For short term storage and frequent use, store at 4°C for up to one month. Avoid repeated freeze-thaw cycles.

**Anti-PON1 Monoclonal Antibody - Protein Information**

**Name** PON1

**Synonyms** PON

**Function**

Hydrolyzes the toxic metabolites of a variety of organophosphorus insecticides. Capable of hydrolyzing a broad spectrum of organophosphate substrates and lactones, and a number of aromatic carboxylic acid esters. Mediates an enzymatic protection of low density lipoproteins against oxidative modification and the consequent series of events leading to atheroma formation.

**Cellular Location**

Secreted, extracellular space.

**Tissue Location**

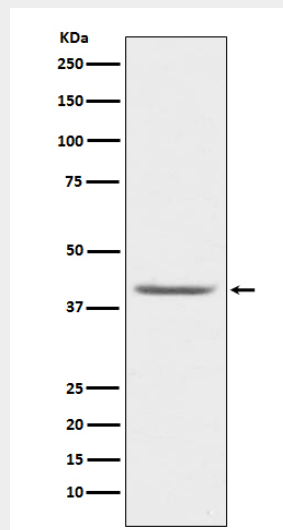
Plasma, associated with HDL (at protein level). Expressed in liver, but not in heart, brain, placenta, lung, skeletal muscle, kidney or pancreas.

**Anti-PON1 Monoclonal Antibody - Protocols**

Provided below are standard protocols that you may find useful for product applications.

- [Western Blot](#)
- [Blocking Peptides](#)
- [Dot Blot](#)
- [Immunohistochemistry](#)
- [Immunofluorescence](#)
- [Immunoprecipitation](#)
- [Flow Cytometry](#)
- [Cell Culture](#)

**Anti-PON1 Monoclonal Antibody - Images**



Western blot analysis of PON1 expression in human plasma lysate.