

Anti-Bag3 Monoclonal Antibody
Catalog # ABO14408

Specification

Anti-Bag3 Monoclonal Antibody - Product Information

Application	WB, IHC, IP
Primary Accession	O95817
Host	Rabbit
Isotype	Rabbit IgG
Reactivity	Human
Clonality	Monoclonal
Format	Liquid

Description

Anti-Bag3 Monoclonal Antibody . Tested in WB, IHC, IP applications. This antibody reacts with Human.

Anti-Bag3 Monoclonal Antibody - Additional Information

Gene ID 9531

Other Names

BAG family molecular chaperone regulator 3, BAG-3, Bcl-2-associated athanogene 3, Bcl-2-binding protein Bis, Docking protein CAIR-1, BAG3, BIS

Application Details

WB 1:500-1:2000
IHC 1:50-1:200
IP 1:50

Contents

Rabbit IgG in phosphate buffered saline, pH 7.4, 150mM NaCl, 0.02% sodium azide and 50% glycerol, 0.4-0.5mg/ml BSA.

Immunogen

A synthesized peptide derived from human Bag3 Inhibits the chaperone activity of HSP70/HSC70 by promoting substrate release. Has anti-apoptotic activity.

Purification

Affinity-chromatography

Storage

Store at -20°C for one year. For short term storage and frequent use, store at 4°C for up to one month. Avoid repeated freeze-thaw cycles.

Anti-Bag3 Monoclonal Antibody - Protein Information

Name BAG3

Synonyms BIS

Function

Co-chaperone and adapter protein that connects different classes of molecular chaperones including heat shock proteins 70 (HSP70s), e.g. HSPA1A/HSP70 or HSPA8/HSC70, and small heat shock proteins (sHSPs), e.g. HSPB8 (PubMed:27884606, PubMed:30559338). Acts as a nucleotide-exchange factor (NEF) promoting the release of ADP from HSP70s, thereby triggering client protein release (PubMed:27884606, PubMed:30559338). Nucleotide release is mediated via BAG3 binding to the nucleotide-binding domain (NBD) of HSP70s, whereas client release is mediated via binding to the substrate-binding domain (SBD) (PubMed:27474739, PubMed:9873016). Has anti-apoptotic activity (PubMed:10597216). Plays a role in the HSF1 nucleocytoplasmic transport (PubMed:26159920).

Cellular Location

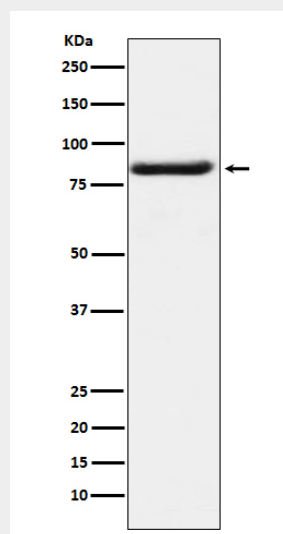
Nucleus. Cytoplasm. Note=Colocalizes with HSF1 to the nucleus upon heat stress (PubMed:26159920)

Anti-Bag3 Monoclonal Antibody - Protocols

Provided below are standard protocols that you may find useful for product applications.

- [Western Blot](#)
- [Blocking Peptides](#)
- [Dot Blot](#)
- [Immunohistochemistry](#)
- [Immunofluorescence](#)
- [Immunoprecipitation](#)
- [Flow Cytometry](#)
- [Cell Culture](#)

Anti-Bag3 Monoclonal Antibody - Images



Western blot analysis of Bag3 expression in K562 cell lysate.