

Anti-DHFR Monoclonal Antibody
Catalog # ABO14413**Specification**

Anti-DHFR Monoclonal Antibody - Product Information

Application	WB, IHC, IF, ICC
Primary Accession	P00374
Host	Rabbit
Isotype	Rabbit IgG
Reactivity	Rat, Human, Mouse
Clonality	Monoclonal
Format	Liquid

Description

Anti-DHFR Monoclonal Antibody . Tested in WB, IHC, ICC/IF applications. This antibody reacts with Human, Mouse, Rat.

Anti-DHFR Monoclonal Antibody - Additional Information

Gene ID 1719

Other Names

Dihydrofolate reductase, 1.5.1.3, DHFR

Application Details

WB 1:1000-1:5000
IHC 1:50-1:200
ICC/IF 1:50-1:200

Contents

Rabbit IgG in phosphate buffered saline, pH 7.4, 150mM NaCl, 0.02% sodium azide and 50% glycerol, 0.4-0.5mg/ml BSA.

Immunogen

A synthesized peptide derived from human DHFR Key enzyme in folate metabolism. Catalyzes an essential reaction for de novo glycine and purine synthesis, and for DNA precursor synthesis.

Purification

Affinity-chromatography

Storage

Store at -20°C for one year. For short term storage and frequent use, store at 4°C for up to one month. Avoid repeated freeze-thaw cycles.

Anti-DHFR Monoclonal Antibody - Protein Information

Name DHFR

Function

Key enzyme in folate metabolism. Contributes to the de novo mitochondrial thymidylate

biosynthesis pathway. Catalyzes an essential reaction for de novo glycine and purine synthesis, and for DNA precursor synthesis. Binds its own mRNA and that of DHFR2.

Cellular Location

Mitochondrion {ECO:0000250|UniProtKB:P00375}. Cytoplasm {ECO:0000250|UniProtKB:P00375}

Tissue Location

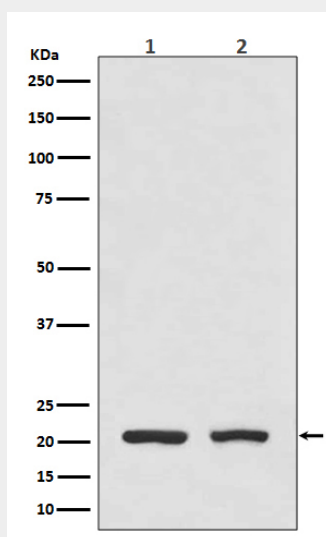
Widely expressed in fetal and adult tissues, including throughout the fetal and adult brains and whole blood Expression is higher in the adult brain than in the fetal brain

Anti-DHFR Monoclonal Antibody - Protocols

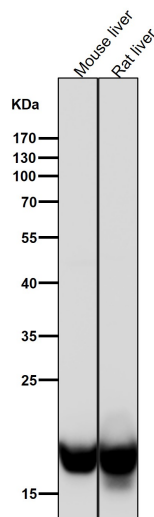
Provided below are standard protocols that you may find useful for product applications.

- [Western Blot](#)
- [Blocking Peptides](#)
- [Dot Blot](#)
- [Immunohistochemistry](#)
- [Immunofluorescence](#)
- [Immunoprecipitation](#)
- [Flow Cytometry](#)
- [Cell Culture](#)

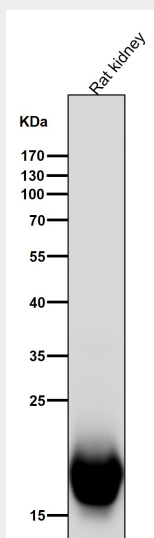
Anti-DHFR Monoclonal Antibody - Images



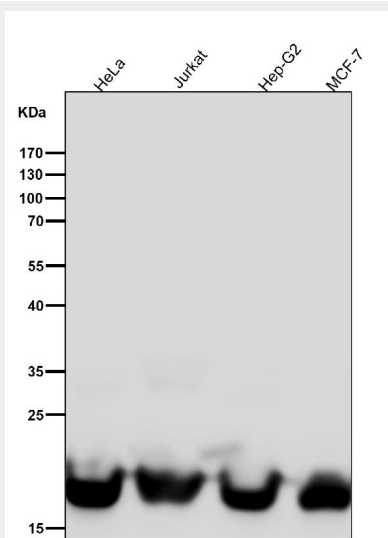
Western blot analysis of DHFR expression in (1) HeLa cell lysate; (2) Mouse spleen lysate.



All lanes use the Antibody at 1:8K dilution for 1 hour at room temperature.



All lanes use the Antibody at 1:8K dilution for 1 hour at room temperature.



All lanes use the Antibody at 1:8K dilution for 1 hour at room temperature.