

Anti-DAZL Monoclonal Antibody
Catalog # ABO14414**Specification**

Anti-DAZL Monoclonal Antibody - Product Information

Application	WB
Primary Accession	Q92904
Host	Rabbit
Isotype	Rabbit IgG
Reactivity	Human
Clonality	Monoclonal
Format	Liquid

Description

Anti-DAZL Monoclonal Antibody . Tested in WB application. This antibody reacts with Human.

Anti-DAZL Monoclonal Antibody - Additional Information

Gene ID 1618

Other Names

Deleted in azoospermia-like, DAZ homolog, DAZ-like autosomal, Deleted in azoospermia-like 1, SPGY-like-autosomal, DAZL, DAZH, DAZL1, DAZLA, SPGYLA

Application Details

WB 1:500-1:2000

Contents

Rabbit IgG in phosphate buffered saline, pH 7.4, 150mM NaCl, 0.02% sodium azide and 50% glycerol, 0.4-0.5mg/ml BSA.

Immunogen

A synthesized peptide derived from human DAZL RNA-binding protein, which is essential for gametogenesis. Plays a central role during spermatogenesis. May act by binding to the 3'-UTR of mRNA and thereby regulating the translation of key transcripts.

Purification

Affinity-chromatography

Storage

Store at -20°C for one year. For short term storage and frequent use, store at 4°C for up to one month. Avoid repeated freeze-thaw cycles.

Anti-DAZL Monoclonal Antibody - Protein Information

Name DAZL

Synonyms DAZH, DAZL1, DAZLA, SPGYLA

Function

RNA-binding protein, which is essential for gametogenesis in both males and females. Plays a central role during spermatogenesis. Acts by binding to the 3'-UTR of mRNA, specifically recognizing GUU triplets, and thereby regulating the translation of key transcripts (By similarity).

Cellular Location

Cytoplasm. Nucleus. Note=Predominantly cytoplasmic. Nuclear in spermatogonia until near the end of the meiotic prophase and cytoplasmic localization from then onward.

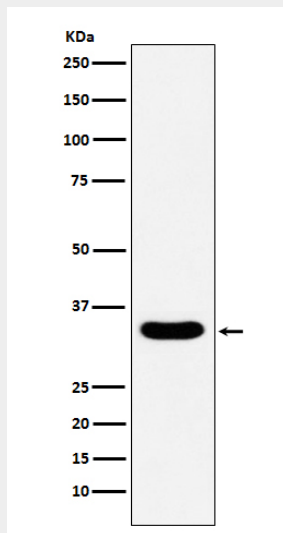
Tissue Location

Testis specific.

Anti-DAZL Monoclonal Antibody - Protocols

Provided below are standard protocols that you may find useful for product applications.

- [Western Blot](#)
- [Blocking Peptides](#)
- [Dot Blot](#)
- [Immunohistochemistry](#)
- [Immunofluorescence](#)
- [Immunoprecipitation](#)
- [Flow Cytometry](#)
- [Cell Culture](#)

Anti-DAZL Monoclonal Antibody - Images

Western blot analysis of DAZL expression in human testis lysate.