

**Anti-TCTP Rabbit Monoclonal Antibody**  
**Catalog # ABO14432****Specification**

---

**Anti-TCTP Rabbit Monoclonal Antibody - Product Information**

Application	WB, IHC, IF, ICC, IP, FC
Primary Accession	<a href="#">P13693</a>
Host	Rabbit
Isotype	Rabbit IgG
Reactivity	Rat, Human, Mouse
Clonality	Monoclonal
Format	Liquid

**Description**

Anti-TCTP Rabbit Monoclonal Antibody . Tested in WB, IHC, ICC/IF, IP, Flow Cytometry applications. This antibody reacts with Human, Mouse, Rat.

**Anti-TCTP Rabbit Monoclonal Antibody - Additional Information**

**Gene ID** 7178

**Other Names**

Translationally-controlled tumor protein, TCTP, Fortilin, Histamine-releasing factor, HRF, p23, TPT1

**Application Details**

WB 1:1000-1:5000<br>IHC 1:50-1:200<br>ICC/IF 1:50-1:200<br>IP 1:50<br>FC 1:100

**Contents**

Rabbit IgG in phosphate buffered saline, pH 7.4, 150mM NaCl, 0.02% sodium azide and 50% glycerol, 0.4-0.5mg/ml BSA.

**Immunogen**

A synthesized peptide derived from human TCTP

**Purification**

Affinity-chromatography

**Storage**

**Store at -20°C for one year. For short term storage and frequent use, store at 4°C for up to one month. Avoid repeated freeze-thaw cycles.**

**Anti-TCTP Rabbit Monoclonal Antibody - Protein Information**

**Name** TPT1

**Function**

Involved in calcium binding and microtubule stabilization (PubMed:<a href="http://www.uniprot.org/citations/12167714" target="\_blank">12167714</a>, PubMed:<a href="http://www.uniprot.org/citations/12167714" target="\_blank">12167714</a>)

href="http://www.uniprot.org/citations/15162379" target="\_blank">15162379</a>, PubMed:<a href="http://www.uniprot.org/citations/15958728" target="\_blank">15958728</a>). Acts as a negative regulator of TSC22D1-mediated apoptosis, via interaction with and destabilization of TSC22D1 protein (PubMed:<a href="http://www.uniprot.org/citations/18325344" target="\_blank">18325344</a>).

#### **Cellular Location**

Cytoplasm.

#### **Tissue Location**

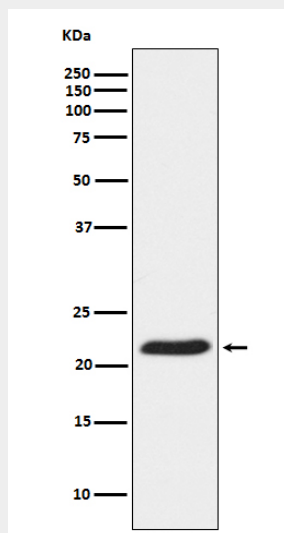
Found in several healthy and tumoral cells including erythrocytes, hepatocytes, macrophages, platelets, keratinocytes, erythroleukemia cells, gliomas, melanomas, hepatoblastomas, and lymphomas. It cannot be detected in kidney and renal cell carcinoma (RCC). Expressed in placenta and prostate

### **Anti-TCTP Rabbit Monoclonal Antibody - Protocols**

Provided below are standard protocols that you may find useful for product applications.

- [Western Blot](#)
- [Blocking Peptides](#)
- [Dot Blot](#)
- [Immunohistochemistry](#)
- [Immunofluorescence](#)
- [Immunoprecipitation](#)
- [Flow Cytometry](#)
- [Cell Culture](#)

### **Anti-TCTP Rabbit Monoclonal Antibody - Images**



Western blot analysis of TCTP Receptor expression in HeLa cell lysate.