

Anti-CRMP2 Rabbit Monoclonal Antibody
Catalog # ABO14445**Specification****Anti-CRMP2 Rabbit Monoclonal Antibody - Product Information**

Application	WB, IHC, IF, ICC, IP, FC
Primary Accession	Q16555
Host	Rabbit
Isotype	Rabbit IgG
Reactivity	Rat, Human, Mouse
Clonality	Monoclonal
Format	Liquid

Description

Anti-CRMP2 Rabbit Monoclonal Antibody . Tested in WB, IHC, ICC/IF, IP, Flow Cytometry applications. This antibody reacts with Human, Mouse, Rat.

Anti-CRMP2 Rabbit Monoclonal Antibody - Additional Information

Gene ID 1808

Other Names

Dihydropyrimidinase-related protein 2, DRP-2, Collapsin response mediator protein 2, CRMP-2, N2A3, Unc-33-like phosphoprotein 2, ULIP-2, DPYSL2, CRMP2, ULIP2

Application Details

WB 1:1000-1:5000
IHC 1:50-1:200
ICC/IF 1:50-1:200
IP 1:50
FC 1:100

Contents

Rabbit IgG in phosphate buffered saline, pH 7.4, 150mM NaCl, 0.02% sodium azide and 50% glycerol, 0.4-0.5mg/ml BSA.

Immunogen

A synthesized peptide derived from human CRMP2

Purification

Affinity-chromatography

Storage

Store at -20°C for one year. For short term storage and frequent use, store at 4°C for up to one month. Avoid repeated freeze-thaw cycles.

Anti-CRMP2 Rabbit Monoclonal Antibody - Protein Information

Name DPYSL2

Synonyms CRMP2, ULIP2

Function

Plays a role in neuronal development and polarity, as well as in axon growth and guidance, neuronal growth cone collapse and cell migration. Necessary for signaling by class 3 semaphorins and subsequent remodeling of the cytoskeleton. May play a role in endocytosis.

Cellular Location

Cytoplasm, cytosol. Cytoplasm, cytoskeleton. Membrane. Note=Tightly but non-covalently associated with membranes

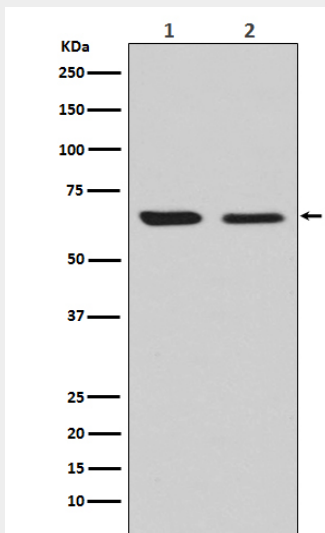
Tissue Location

Ubiquitous.

Anti-CRMP2 Rabbit Monoclonal Antibody - Protocols

Provided below are standard protocols that you may find useful for product applications.

- [Western Blot](#)
- [Blocking Peptides](#)
- [Dot Blot](#)
- [Immunohistochemistry](#)
- [Immunofluorescence](#)
- [Immunoprecipitation](#)
- [Flow Cytometry](#)
- [Cell Culture](#)

Anti-CRMP2 Rabbit Monoclonal Antibody - Images

Western blot analysis of CRMP2 expression in (1) U87-MG cell lysate; (2) NIH/3T3 cell lysate.