

**Anti-Caspr Monoclonal Antibody**  
**Catalog # ABO14446****Specification**

---

**Anti-Caspr Monoclonal Antibody - Product Information**

Application	WB, IHC
Primary Accession	<a href="#">P78357</a>
Host	Rabbit
Isotype	Rabbit IgG
Reactivity	Rat, Human, Mouse
Clonality	Monoclonal
Format	Liquid

**Description**

Anti-Caspr Monoclonal Antibody . Tested in WB, IHC applications. This antibody reacts with Human, Mouse, Rat.

**Anti-Caspr Monoclonal Antibody - Additional Information**

**Gene ID** 8506

**Other Names**

Contactin-associated protein 1, Caspr, Caspr1, Neurexin IV, Neurexin-4, p190, CNTNAP1, CASPR, NRXN4

**Application Details**

WB 1:500-1:2000<br>IHC 1:50-1:200

**Contents**

Rabbit IgG in phosphate buffered saline, pH 7.4, 150mM NaCl, 0.02% sodium azide and 50% glycerol, 0.4-0.5mg/ml BSA.

**Immunogen**

A synthesized peptide derived from human Caspr Contactin-associated protein 2 (Caspr2) is a type I transmembrane protein and member of the neurexin superfamily that mediates nervous system cell-cell interactions through the Neurexin IV-Caspr-Paranodin (NCP) complex.

**Purification**

Affinity-chromatography

Storage

**Store at -20°C for one year. For short term storage and frequent use, store at 4°C for up to one month. Avoid repeated freeze-thaw cycles.**

**Anti-Caspr Monoclonal Antibody - Protein Information**

**Name** CNTNAP1

**Synonyms** CASPR, NRXN4

**Function**

Required, with CNTNAP2, for radial and longitudinal organization of myelinated axons. Plays a role in the formation of functional distinct domains critical for saltatory conduction of nerve impulses in myelinated nerve fibers. Demarcates the paranodal region of the axo-glial junction. In association with contactin involved in the signaling between axons and myelinating glial cells.

**Cellular Location**

Membrane; Single-pass type I membrane protein. Cell junction, paranodal septate junction {ECO:0000250|UniProtKB:O54991}

**Tissue Location**

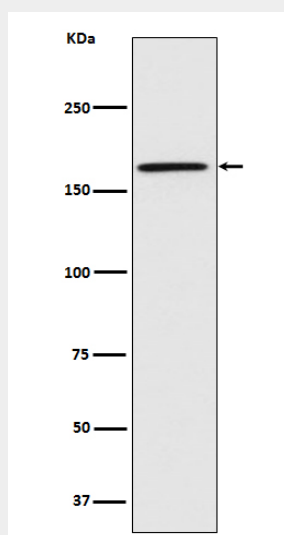
Predominantly expressed in brain. Weak expression detected in ovary, pancreas, colon, lung, heart, intestine and testis

**Anti-Caspr Monoclonal Antibody - Protocols**

Provided below are standard protocols that you may find useful for product applications.

- [Western Blot](#)
- [Blocking Peptides](#)
- [Dot Blot](#)
- [Immunohistochemistry](#)
- [Immunofluorescence](#)
- [Immunoprecipitation](#)
- [Flow Cytometry](#)
- [Cell Culture](#)

**Anti-Caspr Monoclonal Antibody - Images**



Western blot analysis of Caspr expression in U87-MG cell lysate.