

**Anti-Emerin Rabbit Monoclonal Antibody**  
**Catalog # ABO14458****Specification**

---

**Anti-Emerin Rabbit Monoclonal Antibody - Product Information**

Application	WB, IHC, IF, ICC
Primary Accession	<a href="#">P50402</a>
Host	Rabbit
Isotype	Rabbit IgG
Reactivity	Rat, Human, Mouse
Clonality	Monoclonal
Format	Liquid

**Description**

Anti-Emerin Rabbit Monoclonal Antibody . Tested in WB, IHC, ICC/IF applications. This antibody reacts with Human, Mouse, Rat.

**Anti-Emerin Rabbit Monoclonal Antibody - Additional Information**

**Gene ID** 2010

**Other Names**

Emerin, EMD, EDMD, STA

**Application Details**

WB 1:500-1:2000<br>IHC 1:50-1:200<br>ICC/IF 1:50-1:200

**Contents**

Rabbit IgG in phosphate buffered saline, pH 7.4, 150mM NaCl, 0.02% sodium azide and 50% glycerol, 0.4-0.5mg/ml BSA.

**Immunogen**

A synthesized peptide derived from human Emerin

**Purification**

Affinity-chromatography

**Storage**

**Store at -20°C for one year. For short term storage and frequent use, store at 4°C for up to one month. Avoid repeated freeze-thaw cycles.**

**Anti-Emerin Rabbit Monoclonal Antibody - Protein Information**

**Name** EMD

**Synonyms** EDMD, STA

**Function**

Stabilizes and promotes the formation of a nuclear actin cortical network. Stimulates actin polymerization in vitro by binding and stabilizing the pointed end of growing filaments. Inhibits beta- catenin activity by preventing its accumulation in the nucleus. Acts by influencing the nuclear accumulation of beta-catenin through a CRM1- dependent export pathway. Links centrosomes to the nuclear envelope via a microtubule association. Required for proper localization of non- farnesylated prelamins A/C. Together with NEMP1, contributes to nuclear envelope stiffness in germ cells (PubMed:<a href="http://www.uniprot.org/citations/32923640" target="\_blank">32923640</a>). EMD and BAF are cooperative cofactors of HIV-1 infection. Association of EMD with the viral DNA requires the presence of BAF and viral integrase. The association of viral DNA with chromatin requires the presence of BAF and EMD.

#### Cellular Location

Nucleus inner membrane; Single-pass membrane protein; Nucleoplasmic side. Nucleus outer membrane. Note=Colocalized with BANF1 at the central region of the assembling nuclear rim, near spindle-attachment sites. The accumulation of different intermediates of prelamins A/C (non-farnesylated or carboxymethylated farnesylated prelamins A/C) in fibroblasts modify its localization in the nucleus

#### Tissue Location

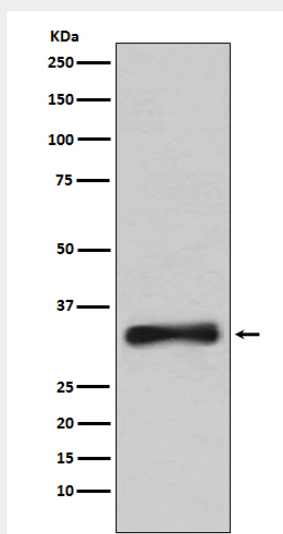
Skeletal muscle, heart, colon, testis, ovary and pancreas

### Anti-Emerin Rabbit Monoclonal Antibody - Protocols

Provided below are standard protocols that you may find useful for product applications.

- [Western Blot](#)
- [Blocking Peptides](#)
- [Dot Blot](#)
- [Immunohistochemistry](#)
- [Immunofluorescence](#)
- [Immunoprecipitation](#)
- [Flow Cytometry](#)
- [Cell Culture](#)

### Anti-Emerin Rabbit Monoclonal Antibody - Images



Western blot analysis of Emerin expression in 293T cell lysate.