

**Anti-Factor XIIIa F13A1 Monoclonal Antibody**  
**Catalog # ABO14460****Specification**

---

**Anti-Factor XIIIa F13A1 Monoclonal Antibody - Product Information**

Application	WB, IHC, IF, ICC, FC
Primary Accession	<a href="#">P00488</a>
Host	Rabbit
Isotype	Rabbit IgG
Reactivity	Human
Clonality	Monoclonal
Format	Liquid

**Description**

Anti-Factor XIIIa F13A1 Monoclonal Antibody . Tested in WB, IHC, ICC/IF, Flow Cytometry applications. This antibody reacts with Human.

**Anti-Factor XIIIa F13A1 Monoclonal Antibody - Additional Information**

**Gene ID** 2162

**Other Names**

Coagulation factor XIII A chain, Coagulation factor XIIIa, 2.3.2.13, Protein-glutamine gamma-glutamyltransferase A chain, Transglutaminase A chain, F13A1, F13A

**Application Details**

WB 1:500-1:2000<br>IHC 1:50-1:200<br>ICC/IF 1:50-1:200<br>FC 1:50

**Contents**

Rabbit IgG in phosphate buffered saline, pH 7.4, 150mM NaCl, 0.02% sodium azide and 50% glycerol, 0.4-0.5mg/ml BSA.

**Immunogen**

A synthesized peptide derived from human Factor XIIIa.

**Purification**

Affinity-chromatography

**Storage**

**Store at -20°C for one year. For short term storage and frequent use, store at 4°C for up to one month. Avoid repeated freeze-thaw cycles.**

**Anti-Factor XIIIa F13A1 Monoclonal Antibody - Protein Information**

**Name** F13A1

**Synonyms** F13A

**Function**

Factor XIII is activated by thrombin and calcium ion to a transglutaminase that catalyzes the formation of gamma-glutamyl- epsilon-lysine cross-links between fibrin chains, thus stabilizing the fibrin clot. Also cross-link alpha-2-plasmin inhibitor, or fibronectin, to the alpha chains of fibrin.

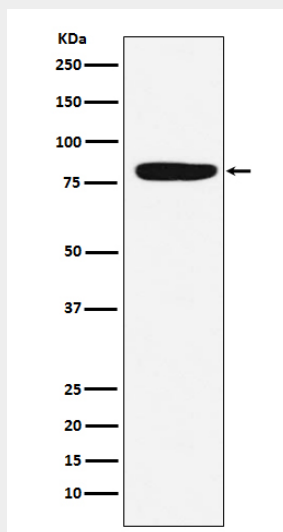
**Cellular Location**

Cytoplasm. Secreted. Note=Secreted into the blood plasma. Cytoplasmic in most tissues, but also secreted in the blood plasma

**Anti-Factor XIIIa F13A1 Monoclonal Antibody - Protocols**

Provided below are standard protocols that you may find useful for product applications.

- [Western Blot](#)
- [Blocking Peptides](#)
- [Dot Blot](#)
- [Immunohistochemistry](#)
- [Immunofluorescence](#)
- [Immunoprecipitation](#)
- [Flow Cytometry](#)
- [Cell Culture](#)

**Anti-Factor XIIIa F13A1 Monoclonal Antibody - Images**

Western blot analysis of Factor XIIIa expression in human spleen lysate.