

Anti-GAL4 Monoclonal Antibody
Catalog # ABO14464**Specification**

Anti-GAL4 Monoclonal Antibody - Product Information

Application	WB, IHC
Primary Accession	P56470
Host	Rabbit
Isotype	Rabbit IgG
Reactivity	Rat, Human
Clonality	Monoclonal
Format	Liquid

Description

Anti-GAL4 Monoclonal Antibody . Tested in WB, IHC applications. This antibody reacts with Human, Rat.

Anti-GAL4 Monoclonal Antibody - Additional Information

Gene ID 3960

Other Names

Galectin-4, Gal-4, Antigen NY-CO-27, L-36 lactose-binding protein, L36LBP, Lactose-binding lectin 4, LGALS4

Application Details

WB 1:500-1:2000
IHC 1:50-1:200

Contents

Rabbit IgG in phosphate buffered saline, pH 7.4, 150mM NaCl, 0.02% sodium azide and 50% glycerol, 0.4-0.5mg/ml BSA.

Immunogen

A synthesized peptide derived from human GAL4 Galectin that binds lactose and a related range of sugars. May be involved in the assembly of adherens junctions.

Purification

Affinity-chromatography

Storage

Store at -20°C for one year. For short term storage and frequent use, store at 4°C for up to one month. Avoid repeated freeze-thaw cycles.

Anti-GAL4 Monoclonal Antibody - Protein Information

Name LGALS4

Function

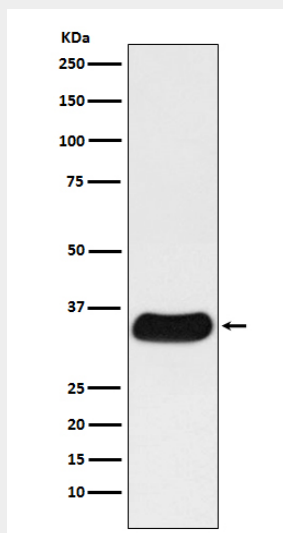
Galectin that binds lactose and a related range of sugars. May be involved in the assembly of adherens junctions.

Anti-GAL4 Monoclonal Antibody - Protocols

Provided below are standard protocols that you may find useful for product applications.

- [Western Blot](#)
- [Blocking Peptides](#)
- [Dot Blot](#)
- [Immunohistochemistry](#)
- [Immunofluorescence](#)
- [Immunoprecipitation](#)
- [Flow Cytometry](#)
- [Cell Culture](#)

Anti-GAL4 Monoclonal Antibody - Images



Western blot analysis of GAL4 expression in rat small intestine lysate.