

**Anti-Myelin oligodendrocyte glycoprotein Monoclonal Antibody**  
**Catalog # ABO14480****Specification**

---

**Anti-Myelin oligodendrocyte glycoprotein Monoclonal Antibody - Product Information**

Application	WB, IHC, IF, ICC
Primary Accession	<a href="#">Q16653</a>
Host	Rabbit
Isotype	Rabbit IgG
Reactivity	Rat, Human, Mouse
Clonality	Monoclonal
Format	Liquid

**Description**

Anti-Myelin oligodendrocyte glycoprotein Monoclonal Antibody . Tested in WB, IHC, ICC/IF applications. This antibody reacts with Human, Mouse, Rat.

**Anti-Myelin oligodendrocyte glycoprotein Monoclonal Antibody - Additional Information**

**Gene ID** 4340

**Other Names**

Myelin-oligodendrocyte glycoprotein, MOG

**Application Details**

WB 1:500-1:2000<br>IHC 1:100-1:500<br>ICC/IF 1:100-1:500

**Contents**

Rabbit IgG in phosphate buffered saline, pH 7.4, 150mM NaCl, 0.02% sodium azide and 50% glycerol, 0.4-0.5mg/ml BSA.

**Immunogen**

A synthesized peptide derived from human Myelin oligodendrocyte glycoprotein Mediates homophilic cell-cell adhesion (By similarity). Minor component of the myelin sheath. May be involved in completion and/or maintenance of the myelin sheath and in cell-cell communication.

**Purification**

Affinity-chromatography

**Storage**

**Store at -20°C for one year. For short term storage and frequent use, store at 4°C for up to one month. Avoid repeated freeze-thaw cycles.**

**Anti-Myelin oligodendrocyte glycoprotein Monoclonal Antibody - Protein Information**

**Name** MOG

**Function**

Mediates homophilic cell-cell adhesion (By similarity). Minor component of the myelin sheath. May be involved in completion and/or maintenance of the myelin sheath and in cell-cell communication.

**Cellular Location**

[Isoform 1]: Cell membrane; Multi- pass membrane protein [Isoform 2]: Cell membrane; Single-pass type I membrane protein [Isoform 4]: Cell membrane; Single- pass type I membrane protein [Isoform 7]: Cell membrane; Single- pass type I membrane protein [Isoform 9]: Cell membrane; Single- pass type I membrane protein

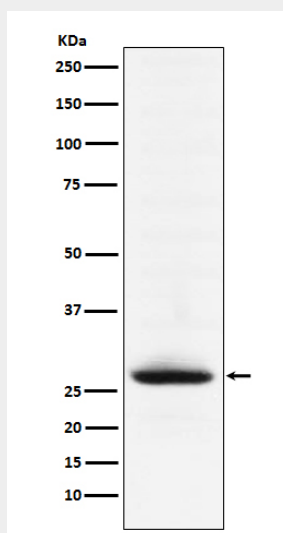
**Tissue Location**

Found exclusively in the CNS, where it is localized on the surface of myelin and oligodendrocyte cytoplasmic membranes

**Anti-Myelin oligodendrocyte glycoprotein Monoclonal Antibody - Protocols**

Provided below are standard protocols that you may find useful for product applications.

- [Western Blot](#)
- [Blocking Peptides](#)
- [Dot Blot](#)
- [Immunohistochemistry](#)
- [Immunofluorescence](#)
- [Immunoprecipitation](#)
- [Flow Cytometry](#)
- [Cell Culture](#)

**Anti-Myelin oligodendrocyte glycoprotein Monoclonal Antibody - Images**

Western blot analysis of Myelin oligodendrocyte glycoprotein expression in mouse brain lysate.