

**Anti-HB9/HLXB9 Monoclonal Antibody**  
**Catalog # ABO14482****Specification**

---

**Anti-HB9/HLXB9 Monoclonal Antibody - Product Information**

Application	WB, IP
Primary Accession	<a href="#">P50219</a>
Host	Rabbit
Isotype	Rabbit IgG
Reactivity	Human, Mouse
Clonality	Monoclonal
Format	Liquid

**Description**

Anti-HB9/HLXB9 Monoclonal Antibody . Tested in WB, IP applications. This antibody reacts with Human, Mouse.

**Anti-HB9/HLXB9 Monoclonal Antibody - Additional Information**

**Gene ID** 3110

**Other Names**

Motor neuron and pancreas homeobox protein 1, Homeobox protein HB9, MNX1, HLXB9

**Application Details**

WB 1:500-1:2000<br>IP 1:50

**Contents**

Rabbit IgG in phosphate buffered saline, pH 7.4, 150mM NaCl, 0.02% sodium azide and 50% glycerol, 0.4-0.5mg/ml BSA.

**Immunogen**

A synthesized peptide derived from human HB9/HLXB9

**Purification**

Affinity-chromatography

**Storage**

**Store at -20°C for one year. For short term storage and frequent use, store at 4°C for up to one month. Avoid repeated freeze-thaw cycles.**

**Anti-HB9/HLXB9 Monoclonal Antibody - Protein Information**

**Name** MNX1

**Synonyms** HLXB9

**Function**

Transcription factor (By similarity). Recognizes and binds to the regulatory elements of target genes, such as visual system homeobox CHX10, negatively modulating transcription (By similarity). Plays a role in establishing motor neuron identity, in concert with LIM domain transcription factor LMO4 (By similarity). Involved in negatively modulating transcription of interneuron genes in motor neurons, acting, at least in part, by blocking regulatory sequence interactions of the ISL1-LHX3 complex (By similarity). Involved in pancreas development and function; may play a role in pancreatic cell fate specification (By similarity).

**Cellular Location**

Nucleus.

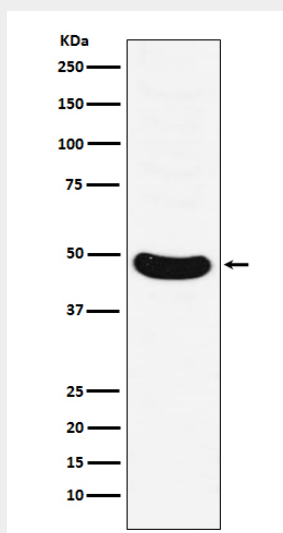
**Tissue Location**

Expressed in lymphoid and pancreatic tissues.

**Anti-HB9/HLXB9 Monoclonal Antibody - Protocols**

Provided below are standard protocols that you may find useful for product applications.

- [Western Blot](#)
- [Blocking Peptides](#)
- [Dot Blot](#)
- [Immunohistochemistry](#)
- [Immunofluorescence](#)
- [Immunoprecipitation](#)
- [Flow Cytometry](#)
- [Cell Culture](#)

**Anti-HB9/HLXB9 Monoclonal Antibody - Images**

Western blot analysis of HB9/HLXB9 expression in Molt-4 cell lysate.

**Anti-HB9/HLXB9 Monoclonal Antibody - Background**

Putative transcription factor involved in pancreas development and function.