

**Anti-CD79a Monoclonal Antibody**  
**Catalog # ABO14487****Specification**

---

**Anti-CD79a Monoclonal Antibody - Product Information**

Application	WB, IHC, IF, ICC, FC
Primary Accession	<a href="#">P11912</a>
Host	Rabbit
Isotype	Rabbit IgG
Reactivity	Human
Clonality	Monoclonal
Format	Liquid

**Description**

Anti-CD79a Monoclonal Antibody . Tested in WB, IHC, ICC/IF, Flow Cytometry applications. This antibody reacts with Human.

**Anti-CD79a Monoclonal Antibody - Additional Information**

**Gene ID** 973

**Other Names**

B-cell antigen receptor complex-associated protein alpha chain, Ig-alpha, MB-1 membrane glycoprotein, Membrane-bound immunoglobulin-associated protein, Surface IgM-associated protein, CD79a, CD79A, IGA, MB1

**Application Details**

WB 1:1000-1:5000<br>IHC 1:50-1:200<br>ICC/IF 1:50-1:200<br>FC 1:30

**Contents**

Rabbit IgG in phosphate buffered saline, pH 7.4, 150mM NaCl, 0.02% sodium azide and 50% glycerol, 0.4-0.5mg/ml BSA.

**Immunogen**

A synthesized peptide derived from human CD79a Antigen binding precedes formation of the CD79A and CD79B heterodimer and subsequent activation of receptor associated kinases. CD79A is a marker for B-lineage lymphoblastic leukemia; mutations in the corresponding mb-1 gene are responsible for abnormally low levels of functional B cell receptors in some cases of chronic B-cell lymphocytic leukemia.

**Purification**

Affinity-chromatography

**Storage**

**Store at -20°C for one year. For short term storage and frequent use, store at 4°C for up to one month. Avoid repeated freeze-thaw cycles.**

**Anti-CD79a Monoclonal Antibody - Protein Information**

**Name** CD79A

**Synonyms** IGA, MB1

**Function**

Required in cooperation with CD79B for initiation of the signal transduction cascade activated by binding of antigen to the B- cell antigen receptor complex (BCR) which leads to internalization of the complex, trafficking to late endosomes and antigen presentation. Also required for BCR surface expression and for efficient differentiation of pro- and pre-B-cells. Stimulates SYK autophosphorylation and activation. Binds to BLNK, bringing BLNK into proximity with SYK and allowing SYK to phosphorylate BLNK. Also interacts with and increases activity of some Src-family tyrosine kinases. Represses BCR signaling during development of immature B- cells.

**Cellular Location**

Cell membrane; Single-pass type I membrane protein. Note=Following antigen binding, the BCR has been shown to translocate from detergent-soluble regions of the cell membrane to lipid rafts although signal transduction through the complex can also occur outside lipid rafts.

**Tissue Location**

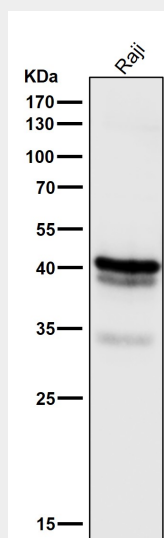
B-cells.

**Anti-CD79a Monoclonal Antibody - Protocols**

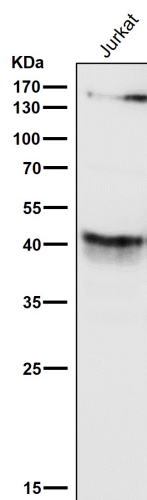
Provided below are standard protocols that you may find useful for product applications.

- [Western Blot](#)
- [Blocking Peptides](#)
- [Dot Blot](#)
- [Immunohistochemistry](#)
- [Immunofluorescence](#)
- [Immunoprecipitation](#)
- [Flow Cytometry](#)
- [Cell Culture](#)

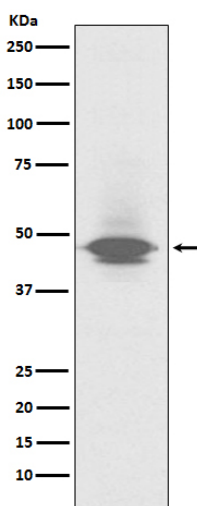
**Anti-CD79a Monoclonal Antibody - Images**



All lanes use the Antibody at 1:3K dilution for 1 hour at room temperature.



All lanes use the Antibody at 1:3K dilution for 1 hour at room temperature.



Western blot analysis of CD79a expression in human spleen lysate.