

**Anti-Calretinin Monoclonal Antibody**  
**Catalog # ABO14491****Specification**

---

**Anti-Calretinin Monoclonal Antibody - Product Information**

Application	WB, IHC, IF, ICC, FC
Primary Accession	<a href="#">P22676</a>
Host	Rabbit
Isotype	Rabbit IgG
Reactivity	Rat, Human, Mouse
Clonality	Monoclonal
Format	Liquid

**Description**

Anti-Calretinin Monoclonal Antibody . Tested in WB, IHC, ICC/IF, Flow Cytometry applications. This antibody reacts with Human, Mouse, Rat.

**Anti-Calretinin Monoclonal Antibody - Additional Information**

**Gene ID** 794

**Other Names**

Calretinin, CR, 29 kDa calbindin, CALB2, CAB29

**Application Details**

WB 1:500-1:1000<br>IHC 1:50-1:200<br>ICC/IF 1:50-1:200<br>FC 1:50

**Contents**

Rabbit IgG in phosphate buffered saline, pH 7.4, 150mM NaCl, 0.02% sodium azide and 50% glycerol, 0.4-0.5mg/ml BSA.

**Immunogen**

A synthesized peptide derived from human Calretinin.

**Purification**

Affinity-chromatography

**Storage**

**Store at -20°C for one year. For short term storage and frequent use, store at 4°C for up to one month. Avoid repeated freeze-thaw cycles.**

**Anti-Calretinin Monoclonal Antibody - Protein Information**

**Name** CALB2 ([HGNC:1435](#))

**Synonyms** CAB29

**Function**

Calcium-binding protein involved in calcium homeostasis and signal transduction. It plays a critical role in buffering intracellular calcium levels and modulating calcium-dependent signaling pathways (PubMed:<a href="http://www.uniprot.org/citations/2001709" target="\_blank">2001709</a>). Predominantly expressed in specific neuronal populations, influences synaptic plasticity and neuronal excitability, contributing to learning and memory (By similarity). During embryonic development, it facilitates neuronal differentiation and maturation (By similarity).

#### Cellular Location

Synapse {ECO:0000250|UniProtKB:Q08331}. Cell projection, dendrite {ECO:0000250|UniProtKB:Q08331}. Note=Located in dendrioles, small dendrites that makes up a brush structure found as the terminal specialization of a dendrite of a unipolar brush cell {ECO:0000250|UniProtKB:Q08331}

#### Tissue Location

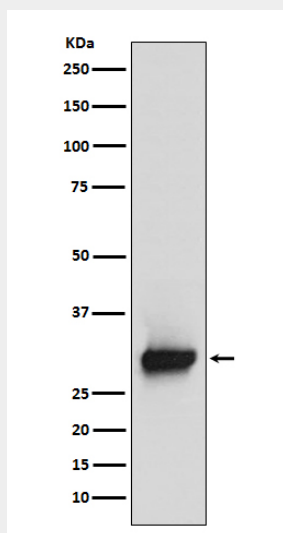
Brain.

### Anti-Calretinin Monoclonal Antibody - Protocols

Provided below are standard protocols that you may find useful for product applications.

- [Western Blot](#)
- [Blocking Peptides](#)
- [Dot Blot](#)
- [Immunohistochemistry](#)
- [Immunofluorescence](#)
- [Immunoprecipitation](#)
- [Flow Cytometry](#)
- [Cell Culture](#)

### Anti-Calretinin Monoclonal Antibody - Images



Western blot analysis of Calretinin expression in SH-SY5Y cell lysate.