

Anti-Hemopexin HPX Monoclonal Antibody Catalog # ABO14501

Specification

Anti-Hemopexin HPX Monoclonal Antibody - Product Information

Application	WB, IHC, IF, ICC, IP
Primary Accession	P02790
Host	Rabbit
Isotype	Rabbit IgG
Reactivity	Human
Clonality	Monoclonal
Format	Liquid

Description

Anti-Hemopexin HPX Monoclonal Antibody . Tested in WB, IHC, ICC/IF, IP applications. This antibody reacts with Human.

Anti-Hemopexin HPX Monoclonal Antibody - Additional Information

Gene ID 3263

Other Names

Hemopexin, Beta-1B-glycoprotein, HPX

Application Details

WB 1:1000-1:5000
IHC 1:50-1:200
ICC/IF 1:50-1:200
IP 1:50

Contents

Rabbit IgG in phosphate buffered saline, pH 7.4, 150mM NaCl, 0.02% sodium azide and 50% glycerol, 0.4-0.5mg/ml BSA.

Immunogen

A synthesized peptide derived from human Hemopexin Binds heme and transports it to the liver for breakdown and iron recovery, after which the free hemopexin returns to the circulation.

Purification

Affinity-chromatography

Storage

Store at -20°C for one year. For short term storage and frequent use, store at 4°C for up to one month. Avoid repeated freeze-thaw cycles.

Anti-Hemopexin HPX Monoclonal Antibody - Protein Information

Name HPX

Function

Binds heme and transports it to the liver for breakdown and iron recovery, after which the free

hemopexin returns to the circulation.

Cellular Location

Secreted.

Tissue Location

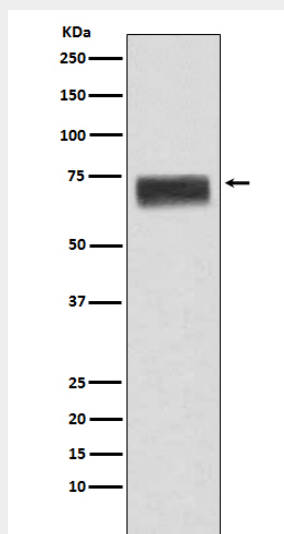
Expressed by the liver and secreted in plasma.

Anti-Hemopexin HPX Monoclonal Antibody - Protocols

Provided below are standard protocols that you may find useful for product applications.

- [Western Blot](#)
- [Blocking Peptides](#)
- [Dot Blot](#)
- [Immunohistochemistry](#)
- [Immunofluorescence](#)
- [Immunoprecipitation](#)
- [Flow Cytometry](#)
- [Cell Culture](#)

Anti-Hemopexin HPX Monoclonal Antibody - Images



Western blot analysis of Hemopexin expression in human fetal liver lysate.