

**Anti-TAX1BP3 Monoclonal Antibody**  
**Catalog # ABO14530****Specification****Anti-TAX1BP3 Monoclonal Antibody - Product Information**

Application	WB, IHC, FC
Primary Accession	<a href="#">O14907</a>
Host	Rabbit
Isotype	Rabbit IgG
Reactivity	Rat, Human, Mouse
Clonality	Monoclonal
Format	Liquid

**Description**

Anti-TAX1BP3 Monoclonal Antibody . Tested in WB, IHC, Flow Cytometry applications. This antibody reacts with Human, Mouse, Rat.

**Anti-TAX1BP3 Monoclonal Antibody - Additional Information**

**Gene ID** 30851

**Other Names**

Tax1-binding protein 3, Glutaminase-interacting protein 3, Tax interaction protein 1, TIP-1, Tax-interacting protein 1, TAX1BP3 ([http://www.genenames.org/cgi-bin/gene\\_symbol\\_report?hgnc\\_id=30684](http://www.genenames.org/cgi-bin/gene_symbol_report?hgnc_id=30684))  
HGNC:30684

**Application Details**

WB 1:500-1:2000<br>IHC 1:50-1:200<br>FC 1:70

**Contents**

Rabbit IgG in phosphate buffered saline, pH 7.4, 150mM NaCl, 0.02% sodium azide and 50% glycerol, 0.4-0.5mg/ml BSA.

**Immunogen**

A synthesized peptide derived from human TAX1BP3 May play a role in the Rho signaling pathway. May act as an inhibitor of the Wnt signaling pathway. May play a role in activation of CDC42 by the viral protein HPV16 E6.

**Purification**

Affinity-chromatography

**Storage**

**Store at -20°C for one year. For short term storage and frequent use, store at 4°C for up to one month. Avoid repeated freeze-thaw cycles.**

**Anti-TAX1BP3 Monoclonal Antibody - Protein Information**

**Name** TAX1BP3 ([HGNC:30684](#))

**Function**

May regulate a number of protein-protein interactions by competing for PDZ domain binding sites. Binds CTNNB1 and may thereby act as an inhibitor of the Wnt signaling pathway. Competes with LIN7A for KCNJ4 binding, and thereby promotes KCNJ4 internalization. May play a role in the Rho signaling pathway. May play a role in activation of CDC42 by the viral protein HPV16 E6.

**Cellular Location**

Cytoplasm. Nucleus. Cell membrane; Peripheral membrane protein; Cytoplasmic side.  
Note=Recruited to the cell membrane by interaction with membrane proteins

**Tissue Location**

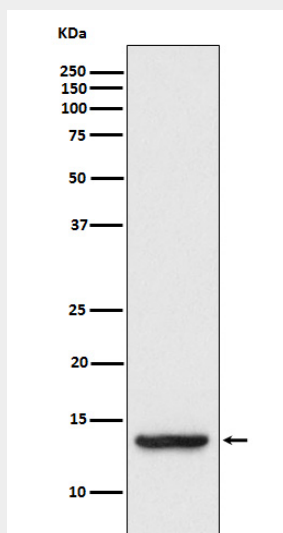
Ubiquitous. Detected in brain, heart, kidney, lung, small intestine and skeletal muscle. Detected in various cell lines including HeLa. Weakly expressed in peripheral blood leukocytes

**Anti-TAX1BP3 Monoclonal Antibody - Protocols**

Provided below are standard protocols that you may find useful for product applications.

- [Western Blot](#)
- [Blocking Peptides](#)
- [Dot Blot](#)
- [Immunohistochemistry](#)
- [Immunofluorescence](#)
- [Immunoprecipitation](#)
- [Flow Cytometry](#)
- [Cell Culture](#)

**Anti-TAX1BP3 Monoclonal Antibody - Images**



Western blot analysis of TAX1BP3 expression in HT-1080 cell lysate.