

**Anti-Huntingtin Monoclonal Antibody**  
**Catalog # ABO14559****Specification**

---

**Anti-Huntingtin Monoclonal Antibody - Product Information**

Application	WB, IHC, IF, ICC, FC
Primary Accession	<a href="#">P42858</a>
Host	Rabbit
Isotype	Rabbit IgG
Reactivity	Rat, Human, Mouse
Clonality	Monoclonal
Format	Liquid

**Description**

Anti-Huntingtin Monoclonal Antibody . Tested in WB, IHC, ICC/IF, Flow Cytometry applications. This antibody reacts with Human, Mouse, Rat.

**Anti-Huntingtin Monoclonal Antibody - Additional Information**

**Gene ID** 3064

**Other Names**

Huntingtin, Huntington disease protein, HD protein, Huntingtin, myristoylated N-terminal fragment, HTT, HD, IT15

**Application Details**

WB 1:500-1:2000<br>IHC 1:50-1:200<br>ICC/IF 1:100-1:500<br>FC 1:100

**Contents**

Rabbit IgG in phosphate buffered saline, pH 7.4, 150mM NaCl, 0.02% sodium azide and 50% glycerol, 0.4-0.5mg/ml BSA.

**Immunogen**

A synthesized peptide derived from human Huntingtin May play a role in microtubule-mediated transport or vesicle function.

**Purification**

Affinity-chromatography

**Storage**

**Store at -20°C for one year. For short term storage and frequent use, store at 4°C for up to one month. Avoid repeated freeze-thaw cycles.**

**Anti-Huntingtin Monoclonal Antibody - Protein Information**

**Name** HTT

**Synonyms** HD, IT15

**Function**

[Huntingtin]: May play a role in microtubule-mediated transport or vesicle function.

**Cellular Location**

[Huntingtin]: Cytoplasm. Nucleus. Early endosome. Note=The mutant Huntingtin protein colocalizes with AKAP8L in the nuclear matrix of Huntington disease neurons. Shuttles between cytoplasm and nucleus in a Ran GTPase- independent manner (PubMed:15654337). Recruits onto early endosomes in a Rab5- and HAP40-dependent fashion (PubMed:16476778)

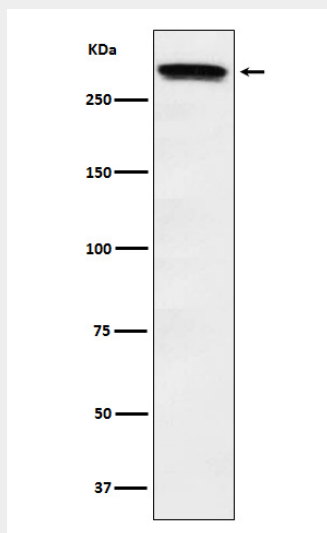
**Tissue Location**

Expressed in the brain cortex (at protein level). Widely expressed with the highest level of expression in the brain (nerve fibers, varicosities, and nerve endings). In the brain, the regions where it can be mainly found are the cerebellar cortex, the neocortex, the striatum, and the hippocampal formation

**Anti-Huntingtin Monoclonal Antibody - Protocols**

Provided below are standard protocols that you may find useful for product applications.

- [Western Blot](#)
- [Blocking Peptides](#)
- [Dot Blot](#)
- [Immunohistochemistry](#)
- [Immunofluorescence](#)
- [Immunoprecipitation](#)
- [Flow Cytometry](#)
- [Cell Culture](#)

**Anti-Huntingtin Monoclonal Antibody - Images**

Western blot analysis of Huntingtin expression in HeLa cell lysate.